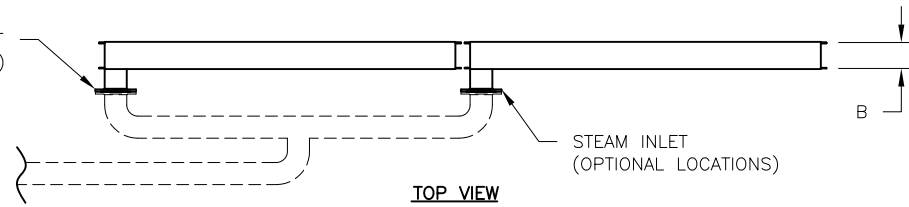


CONFIDENTIAL

DATE	REV	RECORD	DR
8/21	A	SUBMITTAL	JK

A	B	SUPPLY HEADER
4-1/2"	5"	3" DIA
5-1/2"	5"	4" DIA
6-1/2"	6"	5" DIA
7-1/2"	7"	6" DIA

STEAM INLET
(OPTIONAL LOCATIONS)



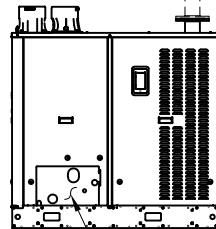
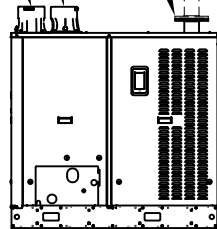
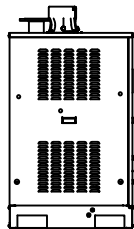
STEAM PIPING
BY OTHERS

PITCH

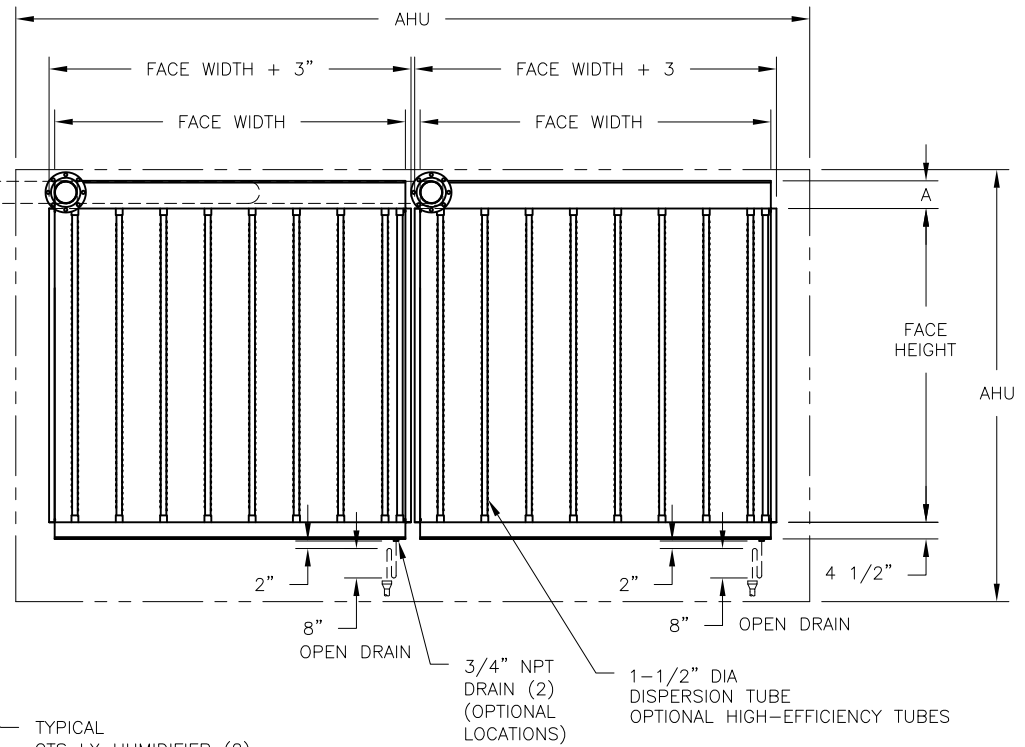
STEAM OUTLET (2)

COMBUSTION AIR INTAKE (2)

FLUE GAS VENT (2)



CLEARANCE
RECOMMENDATIONS



	GTS LX (2) WITH ULTRA-SORB LV (2)	
	MAT'L:	
	SCALE: 1:52	P/N
	DATE: 8/18/21	GENERIC SUBMITTAL