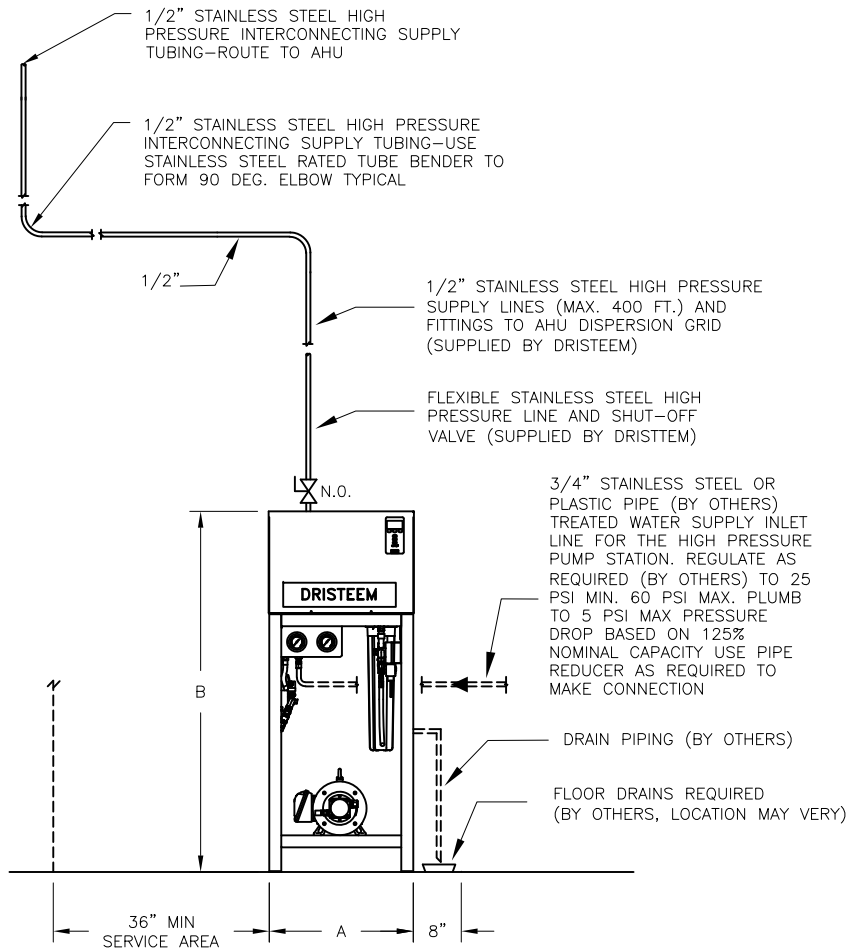


CONFIDENTIAL

DATE	REV	RECORD	DR
8/21	A	SUBMITTAL	JK
8/24	B	SUBMITTAL	JK

HIGH PRESSURE PUMP STATION MDL-250	
NOMINAL CAPACITY	ELECTRIC SUPPLY
.5 GPM	240V-1PH-60H 5.2 AMP. 480V-3PH-60H 1.6 AMP. 600V-3PH-60H 1.3 AMP.
HIGH PRESSURE PUMP STATION MDL-500	
NOMINAL CAPACITY	ELECTRIC SUPPLY
1.1 GPM	240V-1PH-60H 7.3 AMP. 480V-3PH-60H 2.2 AMP. 600V-3PH-60H 1.8 AMP.
HIGH PRESSURE PUMP STATION MDL-1000	
NOMINAL CAPACITY	ELECTRIC SUPPLY
2.2 GPM	240V-1PH-60H 13.8 AMP. 480V-3PH-60H 4.0 AMP. 600V-3PH-60H 3.2 AMP.
HIGH PRESSURE PUMP STATION MDL-1750	
NOMINAL CAPACITY	ELECTRIC SUPPLY
3.8 GPM	480V-3PH-60H 6.6 AMP. 600V-3PH-60H 5.3 AMP.
HIGH PRESSURE PUMP STATION MDL-2500	
NOMINAL CAPACITY	ELECTRIC SUPPLY
5.5 GPM	480V-3PH-60H 6.6 AMP. 600V-3PH-60H 5.3 AMP.
HIGH PRESSURE PUMP STATION MDL-3500	
NOMINAL CAPACITY	ELECTRIC SUPPLY
7.7 GPM	480V-3PH-60H 9.2 AMP. 600V-3PH-60H 7.3 AMP.
HIGH PRESSURE PUMP STATION MDL-5500	
NOMINAL CAPACITY	ELECTRIC SUPPLY
12.1 GPM	480V-3PH-60H 12.6 AMP. 600V-3PH-60H 10.1 AMP.



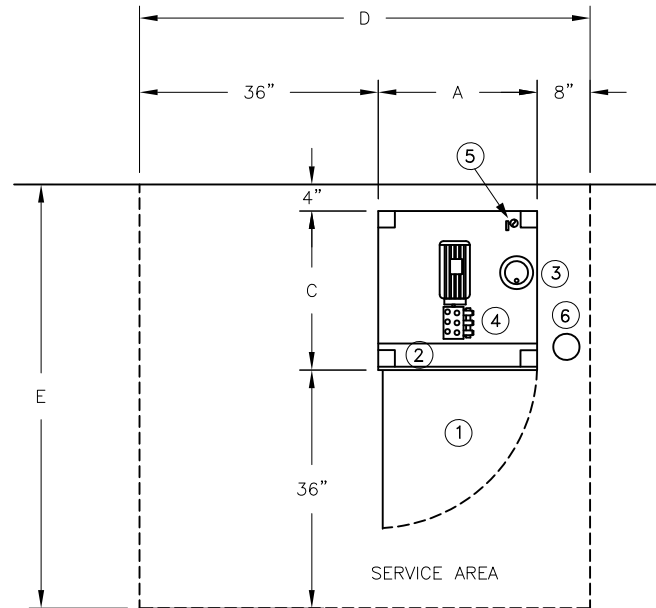
NOTE:
ALL TREATED WATER PIPING AND FITTINGS BEFORE THE HIGH PRESSURE PUMP STATION ARE BY OTHERS SEE PIPING SCHEMATIC DIAGRAM FOR REQUIREMENTS. PIPING TO THE HIGH PRESSURE PUMP STATION MUST BE STAINLESS STEEL OR PLASTIC PIPE

MODEL	A	B	C	D	E
250 SINGLE PUMP	24"	60"	24"	68"	64"
250 REDUNDANT PUMP	24"	76"	30"	68"	70"
500 SINGLE PUMP	24"	60"	24"	68"	64"
500 REDUNDANT PUMP	24"	76"	30"	68"	70"
1000 SINGLE PUMP	24"	60"	24"	68"	64"
1000 REDUNDANT PUMP	24"	76"	30"	68"	70"
1750 SINGLE PUMP	24"	60"	24"	68"	64"
1750 REDUNDANT PUMP	24"	76"	30"	68"	70"
2500 SINGLE PUMP	24"	60"	30"	68"	70"
2500 REDUNDANT PUMP	24"	76"	30"	68"	70"
3500 SINGLE PUMP	24"	60"	30"	68"	70"
3500 REDUNDANT PUMP	24"	76"	30"	68"	70"
5500 SINGLE PUMP	24"	60"	30"	68"	70"
5500 REDUNDANT PUMP	24"	76"	30"	68"	70"

	HIGH-PRESSURE GENERIC PUMP -sheet 1	
	MAT'L:	
	SCALE: 1:32	P/N
DRAWN BY: JK		GENERIC SUBMITTAL
DATE: 8/4/21		

CONFIDENTIAL

DATE	REV	RECORD	DR
8/21	A	SUBMITTAL	JK
8/24	B	SUBMITTAL	JK



LEGEND

- ① HIGH PRESSURE PUMP STATION
- ② PUMP STATION CONTROL CABINET
- ③ 5 MICRON INLET FILTER
- ④ HIGH PRESSURE PUMP
- ⑤ DISPERSION SUPPLY VALVE
- ⑥ FLOOR DRAIN (BY OTHERS)

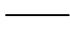
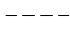




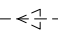
NOTE:

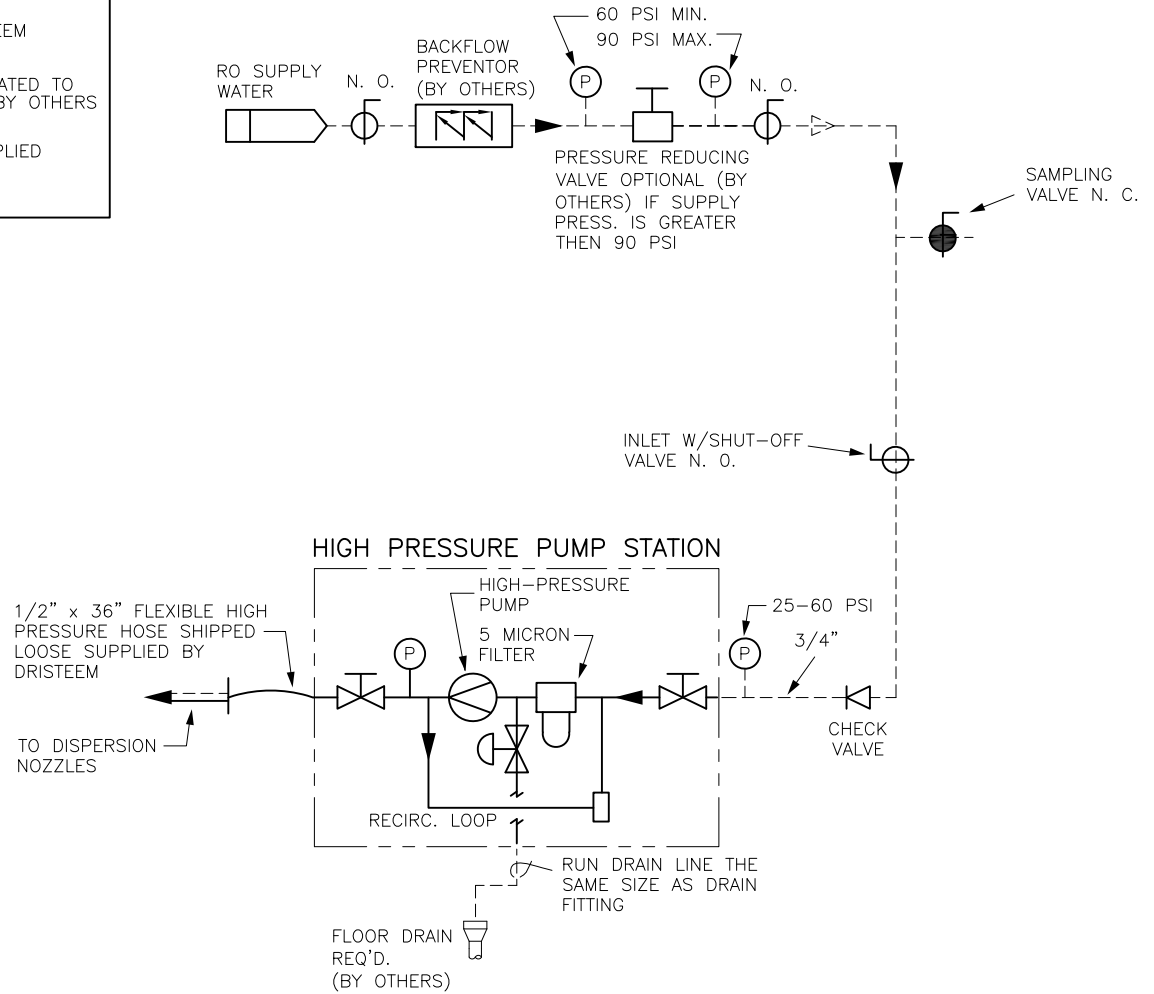
- 1. SIZES AND DIMENSIONS MAY VARY.
- 2. VERIFY SERVICE AREA AND CLEARANCE CODE DIMENSIONS WITH LOCAL AUTHORITY.
- 3. WATER TREATMENT COMPONENT IS FLEXIBLE. KEEP WATER PIPING FLOW AS SHOWN ON SHEET 3 AND MAINTAIN SERVICE CLEARANCES.


	HIGH-PRESSURE GENERIC PUMP -sheet2	
	MAT'L:	
	SCALE: 1:29	P/N
DRAWN BY: JK		GENERIC SUBMITTAL
DATE: 8/4/21		

CONFIDENTIAL

DATE	REV	RECORD	DR
8/21	A	SUBMITTAL	JK
8/24	B	SUBMITTAL	JK

LEGEND:	
	FACTORY PIPING SUPPLIED BY DRISTEEM
	FIELD PIPING SUPPLIED BY OTHERS
	MANUAL SHUT-OFF VALVE SUPPLIED BY OTHERS
	MANUAL SHUT-OFF VALVE SUPPLIED BY DRISTEEM
	SOLENOID VALVE SUPPLIED BY DRISTEEM
	PRESSURE GAUGE RATED TO 120 PSI SUPPLIED BY OTHERS
	PIPE REDUCER SUPPLIED BY OTHERS



PIPING SCHAMTIC DIAGRAM	HIGH-PRESSURE GENERIC PUMP -sheet3	
	MAT'L:	
	SCALE: 1:1	P/N
	DRAWN BY: JK	16349
	DATE: 8/4/21	SHEET 3 OF 3