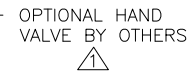
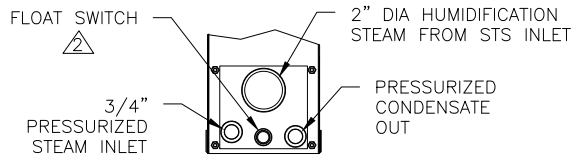


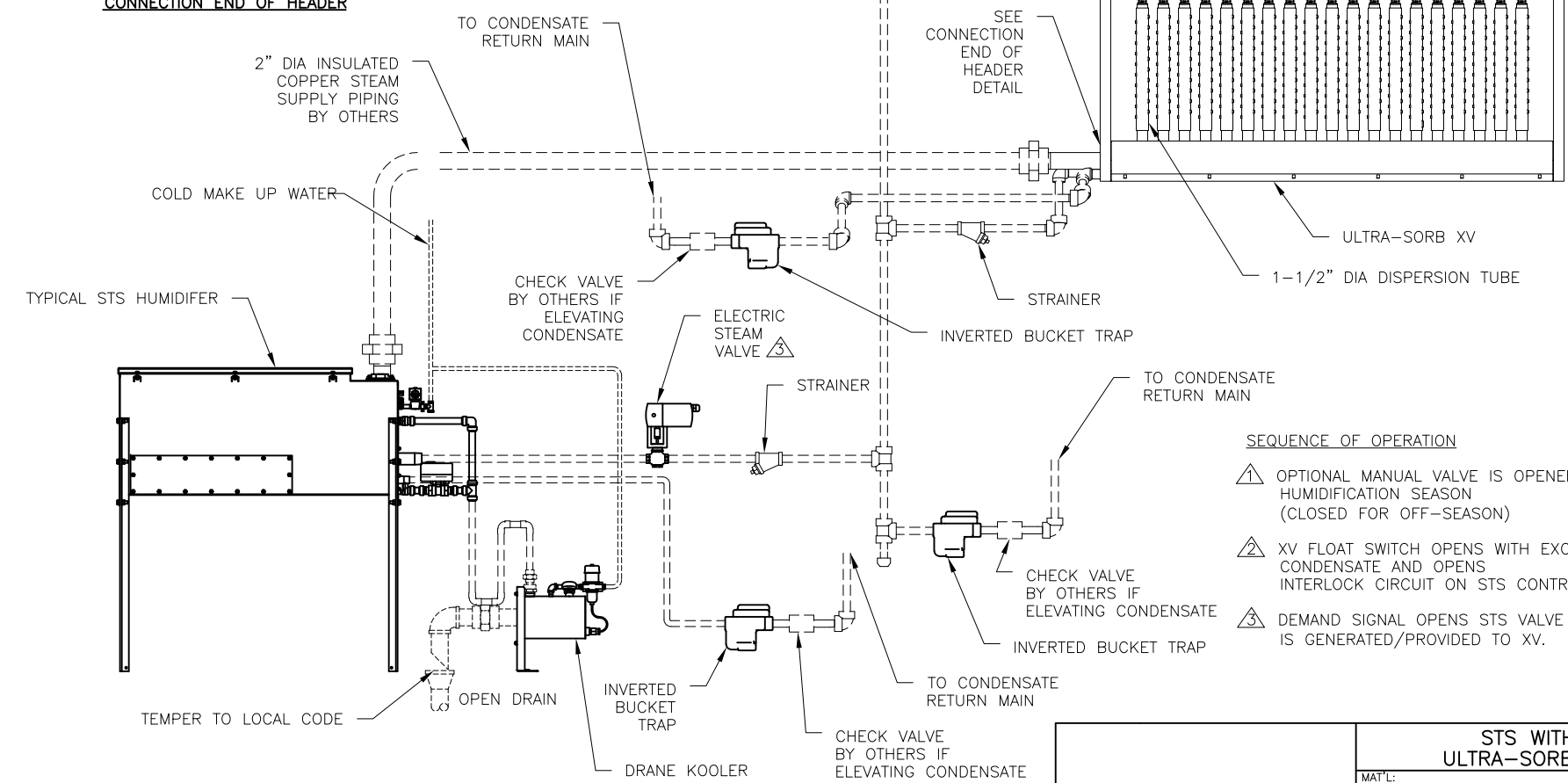
CONFIDENTIAL

DATE	REV	RECORD	DR
8/21	A	SUBMITTAL	JK



FROM BOILER

CONNECTION END OF HEADER



SEQUENCE OF OPERATION

- 1. OPTIONAL MANUAL VALVE IS OPENED FOR HUMIDIFICATION SEASON (CLOSED FOR OFF-SEASON)
- 2. XV FLOAT SWITCH OPENS WITH EXCESSIVE CONDENSATE AND OPENS INTERLOCK CIRCUIT ON STS CONTROLLER.
- 3. DEMAND SIGNAL OPENS STS VALVE AND STEAM IS GENERATED/PROVIDED TO XV.

	STS WITH ULTRA-SORB XV	
	MAT'L:	
	SCALE: 1:24	P/N
	DATE: 10/25/12	GENERIC SUBMITTAL