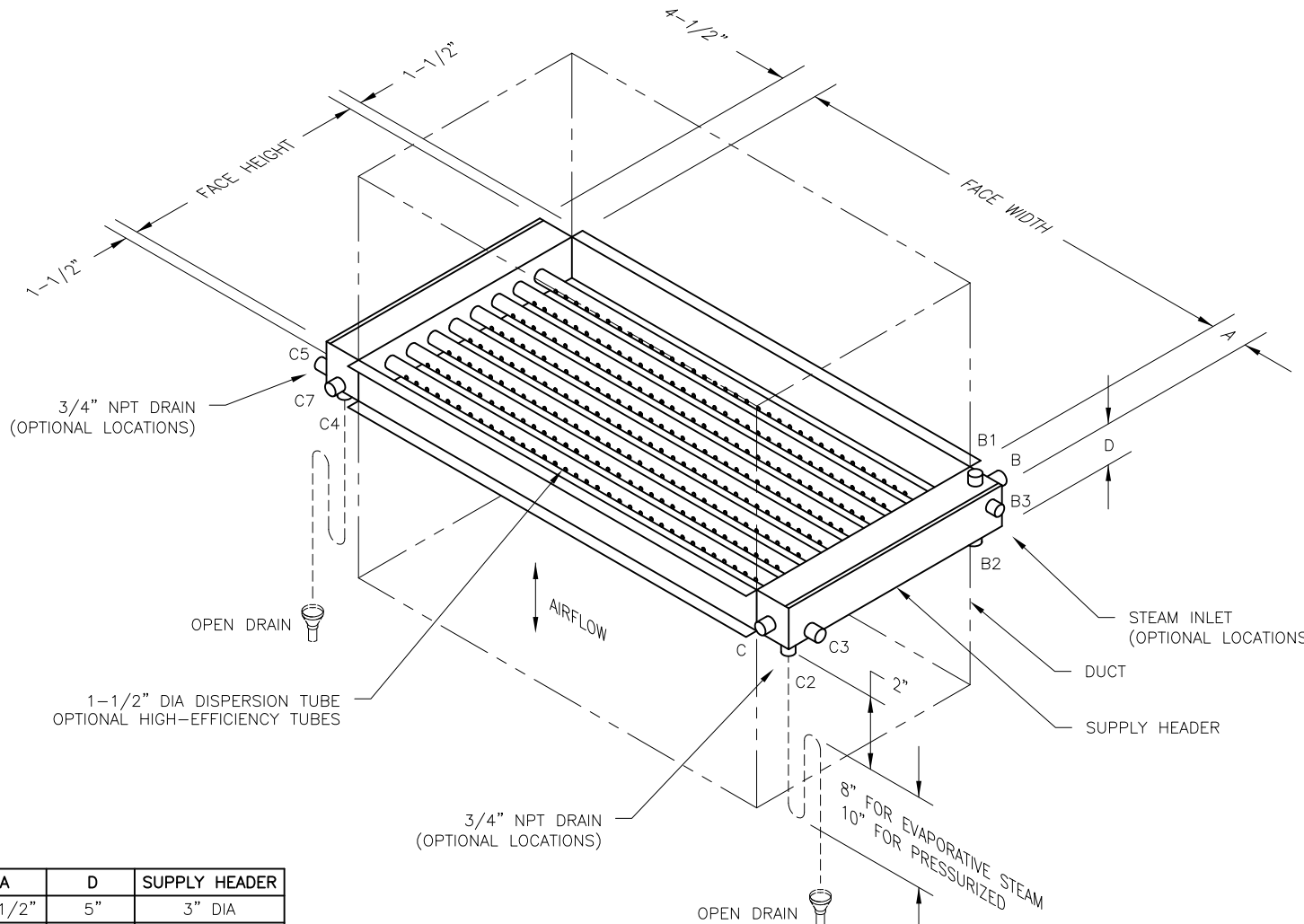


CONFIDENTIAL

DATE	REV	RECORD	DR
9/21	A	SUBMITTAL	JK
12/23	B	SUBMITTAL	JK



3/4" NPT DRAIN
(OPTIONAL LOCATIONS)

OPEN DRAIN

1-1/2" DIA DISPERSION TUBE
OPTIONAL HIGH-EFFICIENCY TUBES

3/4" NPT DRAIN
(OPTIONAL LOCATIONS)

OPEN DRAIN

STEAM INLET
(OPTIONAL LOCATIONS)

DUCT

SUPPLY HEADER

A	D	SUPPLY HEADER
4-1/2"	5"	3" DIA
5-1/2"	5"	4" DIA
6-1/2"	6"	5" DIA
7-1/2"	7"	6" DIA

		ULTRA-SORB LH VERTICAL AIRFLOW RIGHT HAND	
		MAT'L:	
SCALE: 1:21		P/N	
DRAWN BY: JK		GENERIC SUBMITTAL	
DATE: 9/30/21			