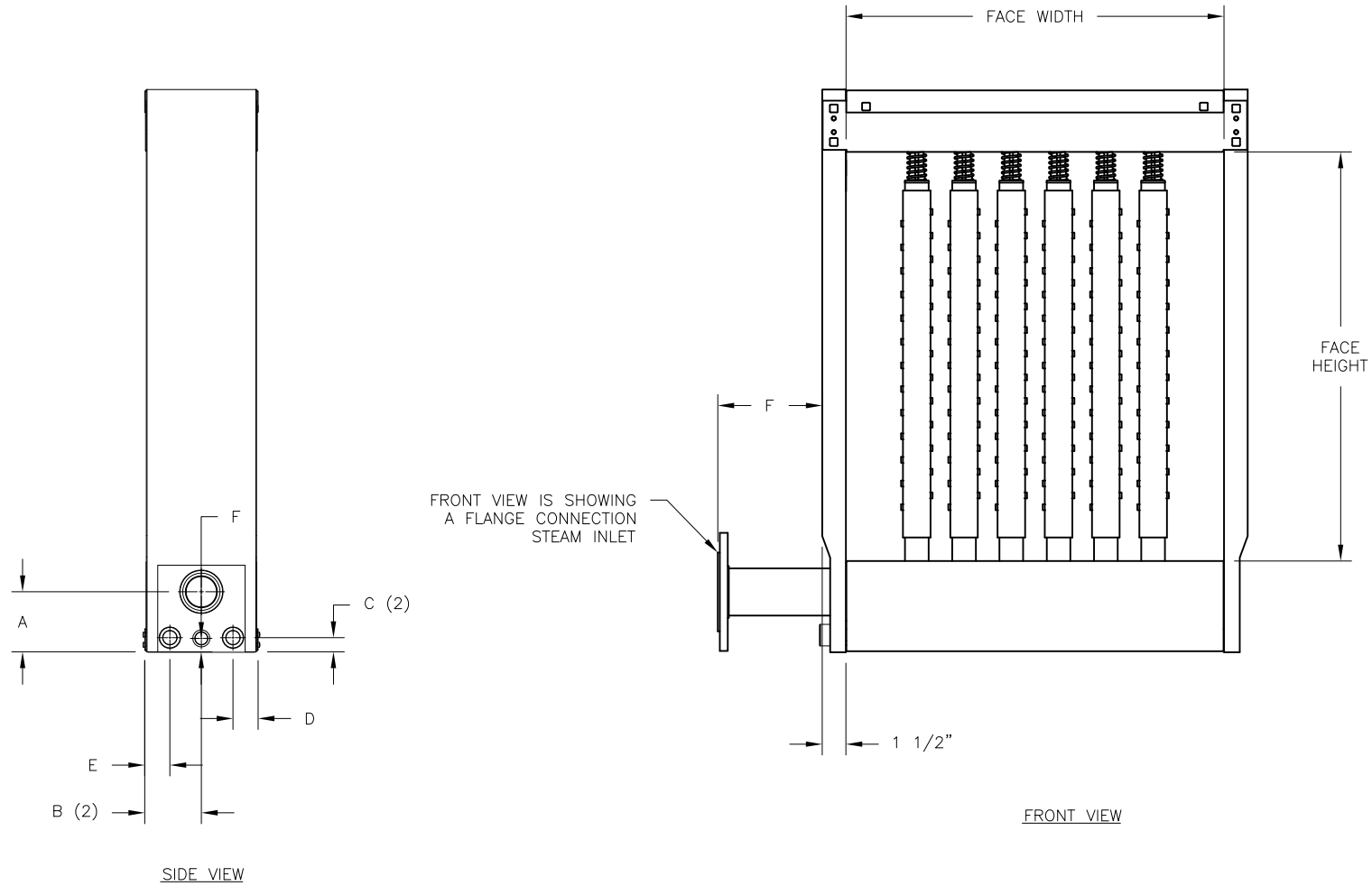


CONFIDENTIAL

DATE	REV	RECORD	DR
6/22	A	SUBMITTAL	JK



3" FLANGE	3-13/16"	3-1/2"	1"	1-1/2"	1-1/2"	6-1/2"
2" COUPLING	4"	3-1/2"	1"	1-1/2"	1-1/2"	1-1/16"
1" COUPLING	4"	3-1/2"	1"	1-1/2"	1-1/2"	5/32"
INLET SIZE	DIMENSION 'A'	DIMENSION 'B'	DIMENSION 'C'	DIMENSION 'D'	DIMENSION 'E'	DIMENSION 'F'

		ULTRA-SORB XV INLETS	
		MAT'L:	
SCALE:	1:11	P/N	
DRAWN BY:	JK	GENERIC SUBMITTAL	
DATE:	6/17/22		