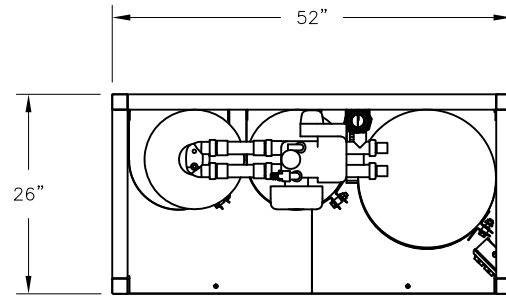
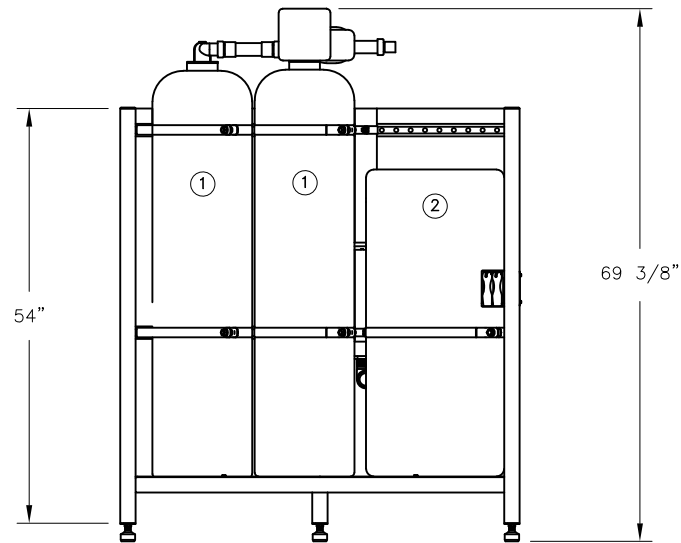



CONFIDENTIAL

DATE	REV	RECORD	DR
8/22	A	SUBMITTAL	JK



DUPLEX WATER SOFTENER AND BRINE TANK 1" NPT CONNECTIONS			
EQUIPMENT	TOTAL CAPACITY	DIMENSION	ELECTRIC SUPPLY
① RESIN TANKS (2)	5.0 CU. FT.	13"φ x 54"H EA.	120 VOLTS 5 AMP. OUTLET
② BRINE TANK		18"φ x 40"H	



		WD1354 SKID	
		MAT'L:	
SCALE:	1:25	P/N	
DRAWN BY:	JK	GENERIC SUBMITTAL	
DATE:	8/15/22		