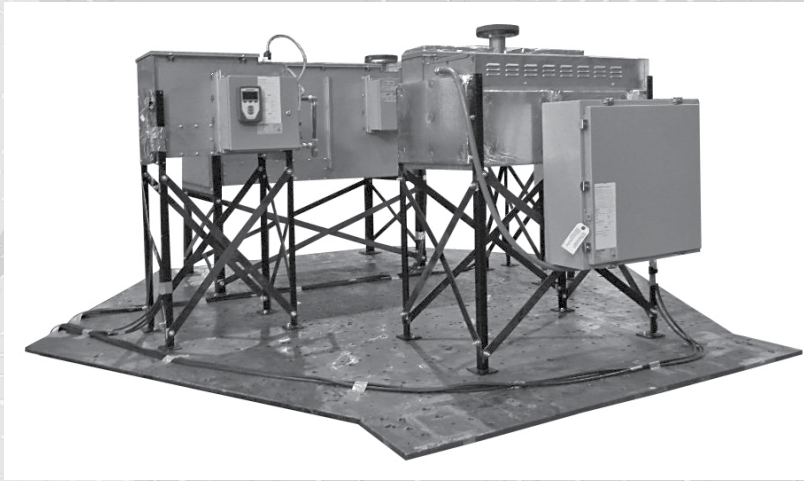


Seismic


Certification Option











*Installation, Operation, and
Maintenance Manual*

Read and save these instructions

Warnings and cautions

 WARNING	CAUTION
Indicates a hazardous situation that could result in death or serious injury if instructions are not followed.	Indicates a hazardous situation that could result in damage to or destruction of property if instructions are not followed.

 WARNING	
	<p>Read all warnings and instructions</p> <p>This page provides important safety instructions; it is intended to supplement — not replace — the humidifier's Installation, Operation, and Maintenance Manual (IOM). Read the IOM that was provided with the humidifier before performing service or maintenance procedures on any part of the system other than installing the Seismic Certification option. Failure to follow all warnings and instructions could produce the hazardous situations described here and in the IOM, resulting in property damage, personal injury, or death.</p> <p>If the IOM is missing, go to www.dristeem.com to download a replacement.</p>
	<p>Hot surfaces and hot water</p> <p>Steam humidification systems have extremely hot surfaces, and water in tanks, electrode cylinders, steam pipes, and dispersion assemblies can be as hot as 212 °F (100 °C). To avoid severe burns, allow the entire humidification system to cool.</p> <p>Follow the cool-down procedure in the humidifier's IOM before performing service or maintenance procedures on any part of the system.</p>
   	<p>Shut down the energy source</p> <p>Before performing service or maintenance procedures on any part of the humidification system, verify that all energy sources are off. Energy sources can be electricity, gas, steam, or hot liquid. Failure to shut down the energy source could result in carbon monoxide poisoning, fire, explosion, electrical shock, and other hazardous conditions. These hazardous conditions could cause property damage, personal injury, or death.</p> <p>Contact with energized circuits can cause property damage, severe personal injury or death as a result of electrical shock or fire. Do not remove the shroud/cover, electrical panel cover/door, access panels, or heater terminal cover until electrical power is disconnected.</p> <p>Follow the shutdown procedure in the humidifier's IOM before performing service or maintenance procedures on any part of the system.</p>
	<p>Electrical shock hazard</p> <p>If the humidifier starts up at a call for humidity during maintenance, severe bodily injury or death from electrical shock could occur. To prevent such start-up, follow the procedure below before performing service or maintenance procedures on this humidifier (after the tank has cooled down and drained):</p> <ol style="list-style-type: none"> 1. Use the Vapor-logic keypad to change the control mode to Standby. 2. Shut off all electrical power to the humidifier using the field-installed fused disconnect, and lock all power disconnect switches in the OFF position. 3. Close the field-installed manual water supply shut-off valve.


 CAUTION
<p>Damage from hot discharge water</p> <p>Discharge water can be as hot as 212 °F (100 °C) and can damage the drain plumbing.</p> <p>If the humidifier is equipped with a water tempering device such as a DriSteem Drane-kooler™, it needs fresh make-up water in order to function properly. Make sure the water supply to the Drane-kooler remains open during draining.</p> <p>If the humidifier is not equipped with a water tempering device, allow the tank to cool before opening the drain valve.</p>

Table of contents

Gas-to-Steam	2
Floor mount installation drawing	2
Outdoor enclosure installation drawing	3
Steam-to-Steam	4
STS-25 through STS-100 floor mount installation drawing	4
STS-200 through STS-800 floor mount installation drawing	6
XT Series	8
Indoor mounting	8
Outdoor mounting	10
Resistive-to-Steam	12
Mounting installation drawing	12
Outdoor enclosure installation drawing	13
Vaporstream	14
Floor mount installation drawing	14
Floor mount installation steps	15
Weather cover installation drawing	16
Wall mount installation drawing	17
Vapormist	17
Mini-bank	18
Installation drawing in an air handling unit	18
Installation drawing in a duct	19
Ultra-sorb	20
Model LV Installation drawing in an air handling unit	20
Model LV Installation drawing in a duct	21
Model LH Installation drawing in an air handling unit	22
Model LH Installation drawing in a duct	23
Model XV Installation drawing in an air handling unit	24
Model XV Installation drawing in a duct	25
Model MP Installation drawing in an air handling unit	26
Model MP Installation drawing in a duct	27

DriSteem humidification systems listed in this manual meet HCAI Seismic Certification Preapproval (OSP) requirements for healthcare facilities in California. These requirements also satisfy IBC 2015 and ICC-ES AC-156 test criteria throughout North America.

DriSteem's Seismic Certification option validates that the product meets OSP criteria for preapproval. It is available for specific configurations of GTS LX series, STS, RTS, Vapormist, Vaporstream, XT (humidifiers and steam blowers), Mini-bank, and Ultra-sorb.

The HCAI and IBC certificates are available on www.dristeem.com/home.

GTS humidifier LX series: Floor mount installation drawing

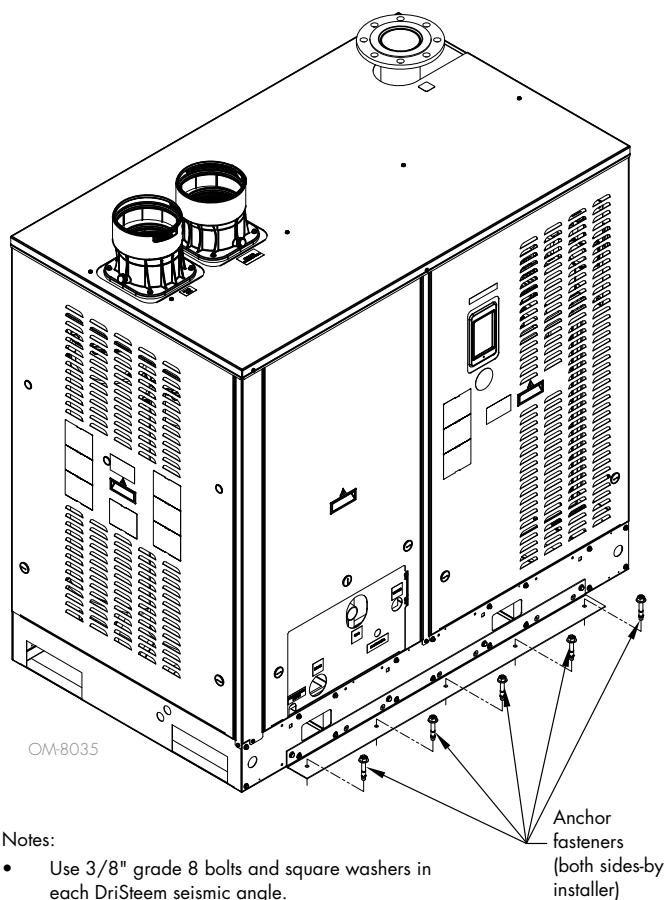
WARNING

Mount humidifier per the instructions in this manual and to a structurally stable surface. Improper mounting of the humidifier can cause it to fall or to tip, resulting in severe personal injury or death.

Refer to the GTS humidifier LX series IOM for all other installation, operation, and maintenance instructions. Complete the seismic installation as shown in Figure 2-1 and Figure 2-2.

NOTE: Use 3/8" grade 8 bolts and square washers in each DriSteem seismic angle.

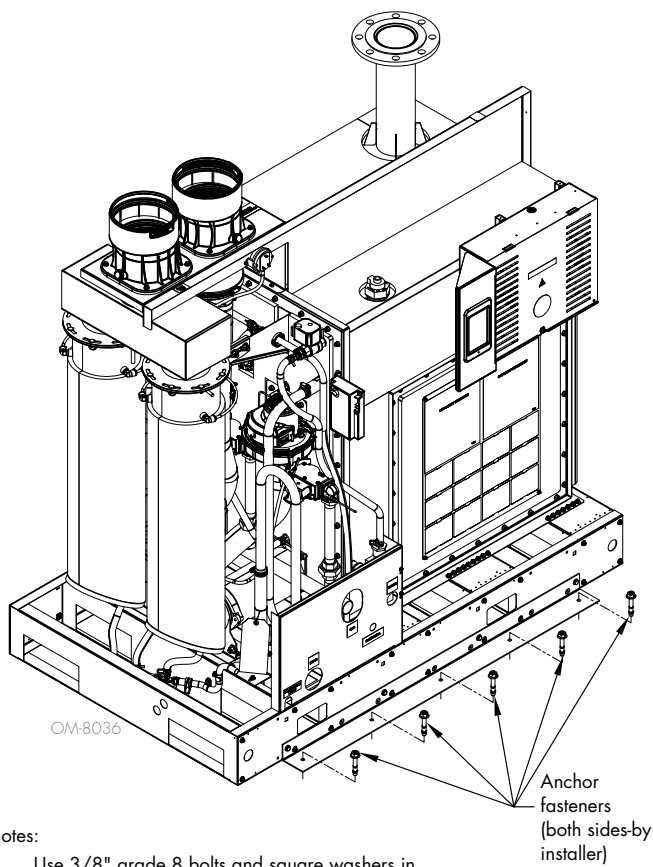
FIGURE 2-1: LX SERIES FLOOR MOUNT SEISMIC CERTIFICATION WITH ENCLOSURE OPTION INSTALLATION



Notes:

- Use 3/8" grade 8 bolts and square washers in each DriSteem seismic angle.
- Confirm the door of unit is attached with quarter-turn before operating.

FIGURE 2-2: LX SERIES FLOOR MOUNT SEISMIC CERTIFICATION NO ENCLOSURE OPTION INSTALLATION



Notes:

- Use 3/8" grade 8 bolts and square washers in each DriSteem seismic angle.

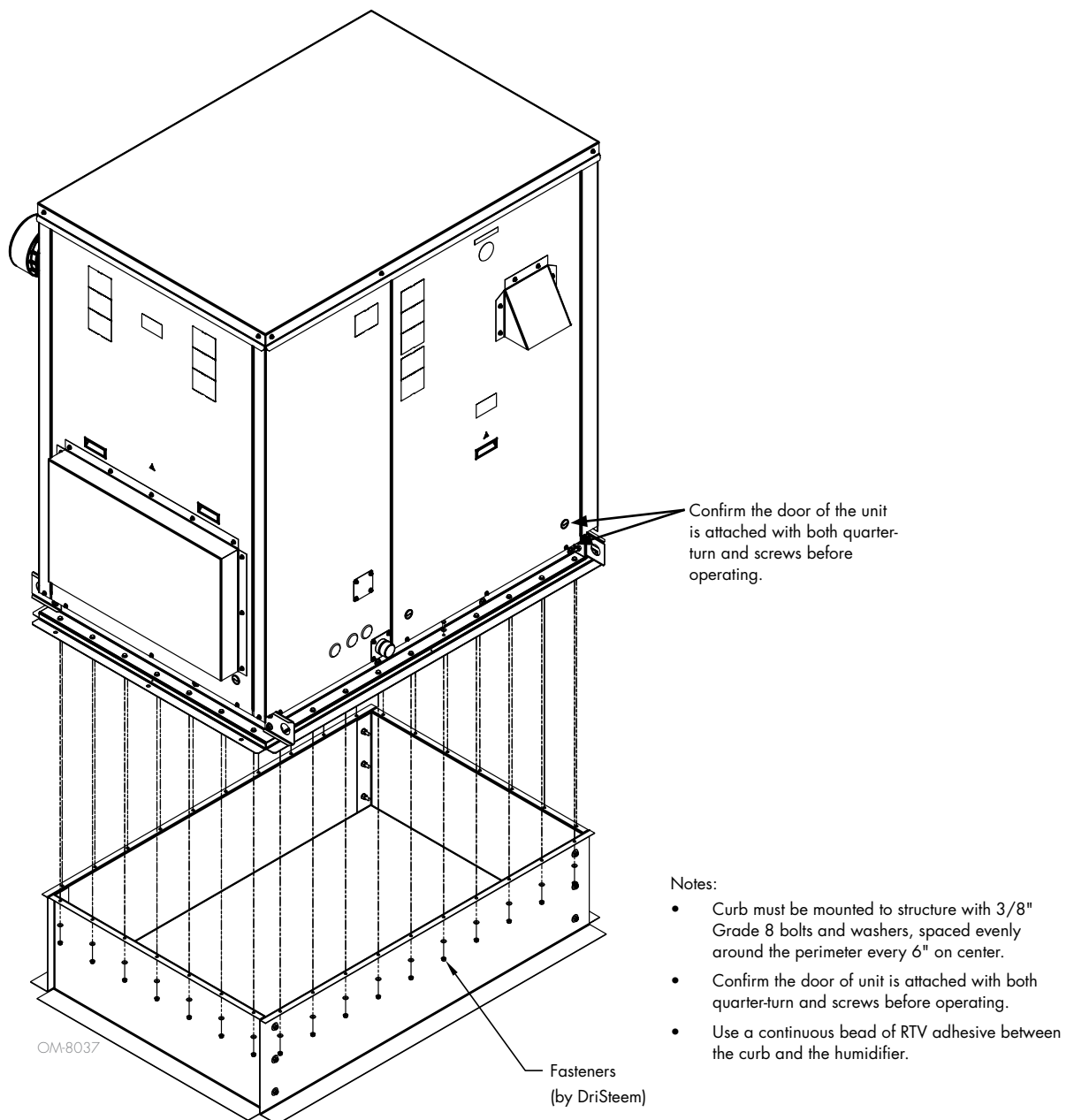
GTS humidifier LX series: Outdoor enclosure installation drawing

WARNING

Mount humidifier per the instructions in this manual and to a structurally stable surface. Improper mounting of the humidifier can cause it to fall or to tip, resulting in severe personal injury or death.

Refer to the GTS humidifier LX series IOM for all other installation, operation, and maintenance instructions. Complete the seismic installation as shown in Figure 3-1.

FIGURE 3-1: LX SERIES OUTDOOR ENCLOSURE SEISMIC CERTIFICATION CURB MOUNT OPTION INSTALLATION



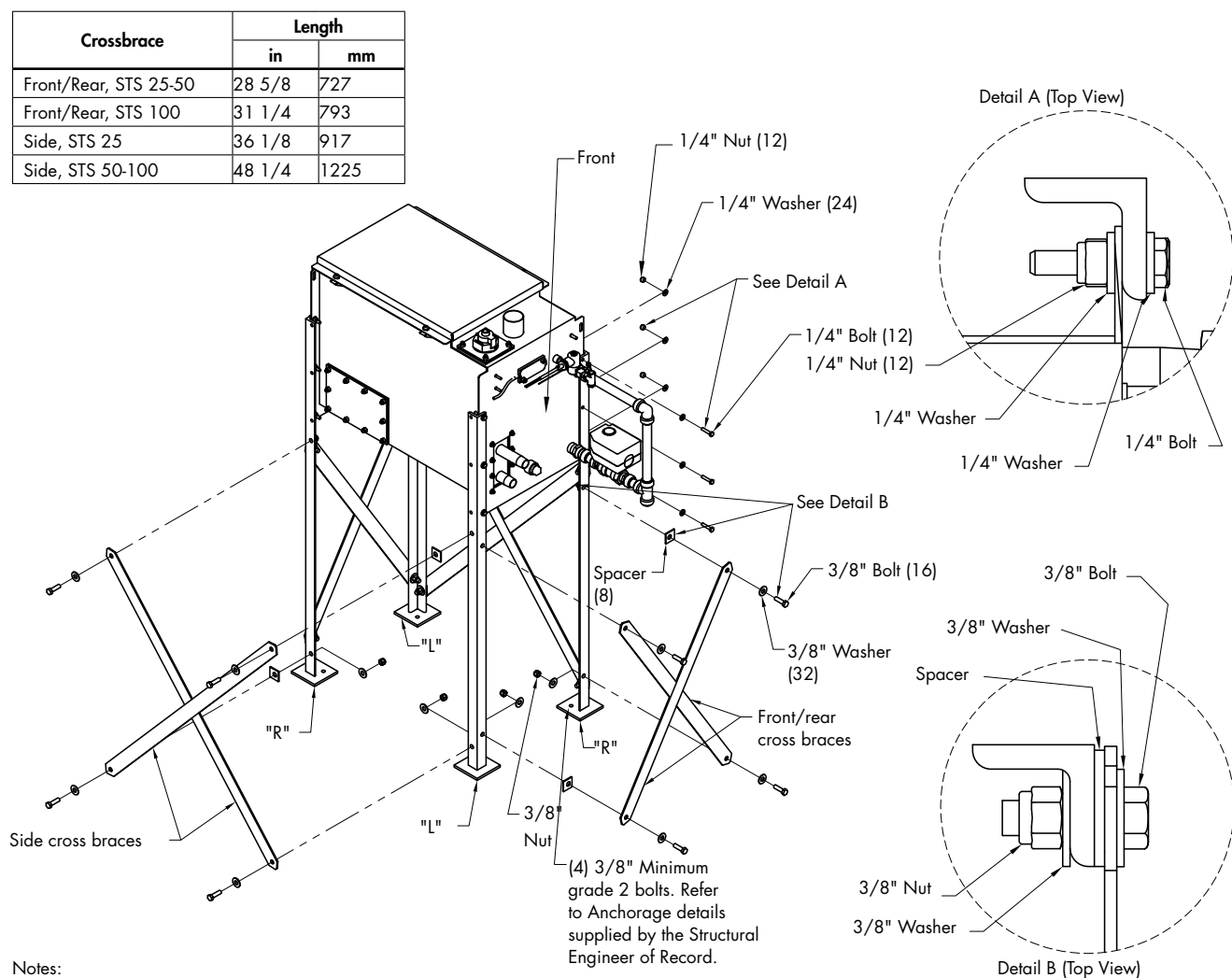
STS-25 through STS-100 floor mount installation drawing

WARNING

Mount humidifier per the instructions in this manual and to a structurally stable surface. Improper mounting of the humidifier can cause it to fall or to tip, resulting in severe personal injury or death.

Refer to the STS IOM for all other installation, operation, and maintenance instructions. Complete the seismic installation as shown in Figure 4-1 and the installation steps on the next page.

FIGURE 4-1: STS-25 THROUGH STS-100 FLOOR MOUNT SEISMIC CERTIFICATION OPTION INSTALLATION



DM-11911

STS-25 through STS-100 floor mount installation steps

1. Attach legs to tank assembly. See Detail A in Figure 4-1.
 - a. Identify "Front Right" and "Back Left" leg weldments. The side of the humidifier with the drain assembly and heat exchanger connections is the front. The two leg weldments with "R" marked on the bottom of the feet are used in these locations. Holding the leg weldments so that the angle iron is in the shape of an "L" when looking at it from the top, these have the fourth hole closer to the third hole on the horizontal part of the "L". Reference Figure 2-1 for proper locations.
 - b. The other two weldments, marked "L" on the bottom of the feet, are used in the "Front Left" and "Back Right" locations. See Figure 2-1 for back view callout. Callout will help orientation during installation.
 - c. Use supplied 1/4"-20 x 1/4" bolts to attach leg weldments to tank. Use all three bolt locations on all legs.
 - d. Leave these bolts loose until after cross braces are completely assembled and tightened in step 2.
2. Attach cross braces to legs. See Detail B in Figure 4-1.
 - a. Attach cross braces to legs as shown. Use three square spacers on each side of the outer cross braces to prevent bowing.
 - b. Torque all cross brace bolts to 30 ft-lbs (40 N-m).
3. Torque all leg bolts to 8 ft-lbs (10 N-m).
4. Attach legs to support structure using all four bolt hole locations and in accordance to instructions by the Structural Engineer of Record.
5. Refer to the STS IOM for all other installation, operation, and maintenance instructions.

WARNING

Mount humidifier per the instructions in this manual and to a structurally stable surface. Improper mounting of the humidifier can cause it to fall or to tip, resulting in severe personal injury or death.

STS-200 through STS-800 floor mount installation drawing

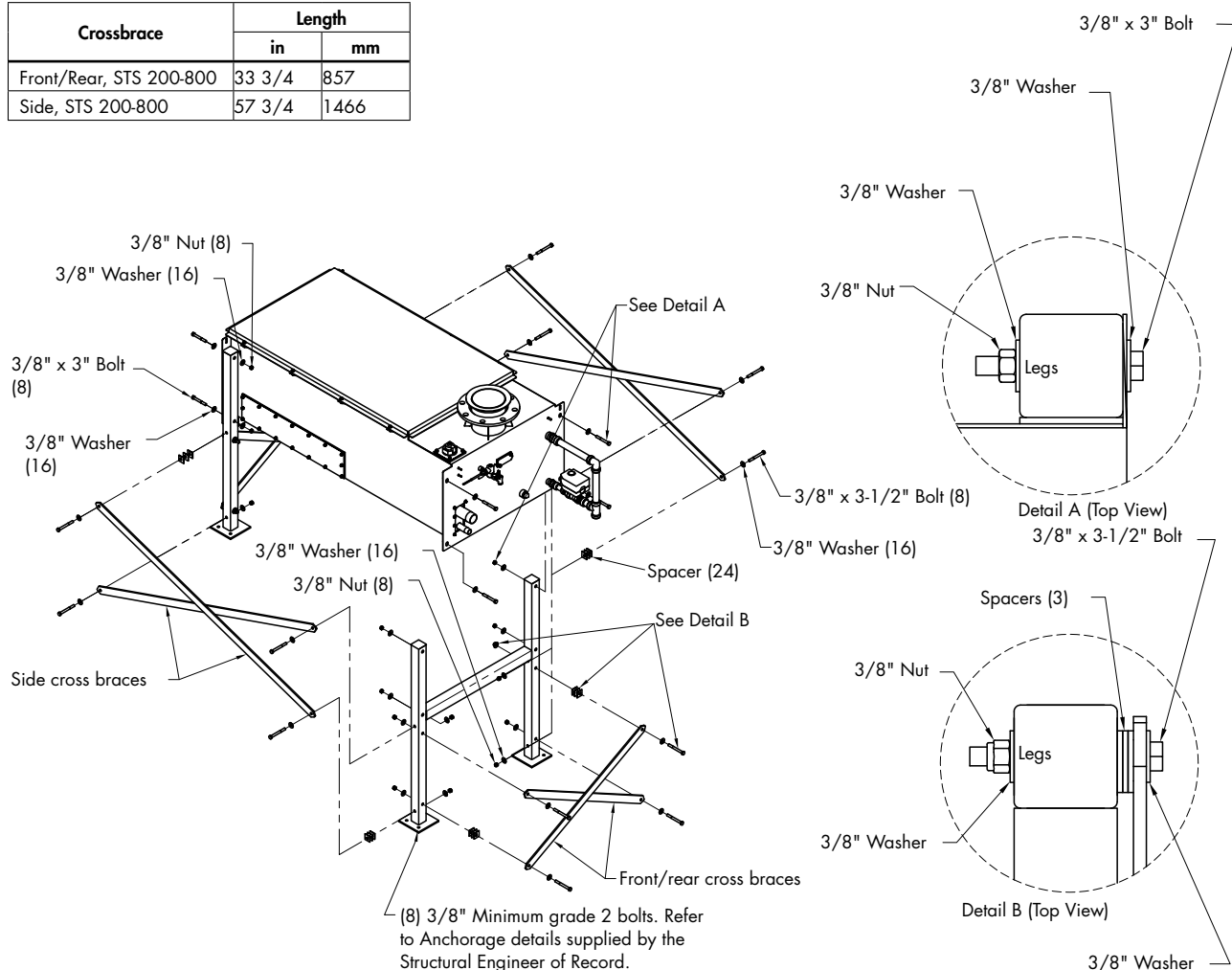
WARNING

Mount humidifier per the instructions in this manual and to a structurally stable surface. Improper mounting of the humidifier can cause it to fall or to tip, resulting in severe personal injury or death.

Refer to the Steam-to-Steam (STS® humidifier) IOM for all other installation, operation, and maintenance instructions. Complete the seismic installation as shown in Figure 6-1 and the installation steps on the next page.

FIGURE 6-1: STS-200 THROUGH STS-800 FLOOR MOUNT SEISMIC CERTIFICATION OPTION INSTALLATION

Crossbrace	Length	
	in	mm
Front/Rear, STS 200-800	33 3/4	857
Side, STS 200-800	57 3/4	1466



Notes:

1. The height from floor to bottom of tank is 23 7/8 in (606 mm).
2. All hardware shown supplied by DriSteam.
3. All cabinet mounted keypads require captive bracket. All controllers require captive standoffs.

DM-11912

STS-200 through STS-800 floor mount installation steps

1. Attach legs to tank assembly. See Detail A in Figure 6-1.
 - a. Use supplied 3/8" x 3" bolts to attach leg weldments to tank. Use both bolt locations on all legs.
 - b. Leave these bolts loose until after cross braces are completely assembled and tightened in step 2.
2. Attach cross-braces to legs. See Detail B in Figure 6-1.
 - a. Use supplied 3/8" x 3 1/2" bolts to attach cross braces to legs as shown. Use three square spacers on each side of the outer cross braces to prevent bending.
 - b. Torque all cross-brace bolts to 30 ft-lbs (40 N-m).
3. Torque all leg bolts to 30 ft-lbs (40 N-m).
4. Attach legs to support structure using all eight bolt hole locations and in accordance to instructions by the Structural Engineer of Record.
5. Refer to the STS IOM for all other installation, operation, and maintenance instructions.

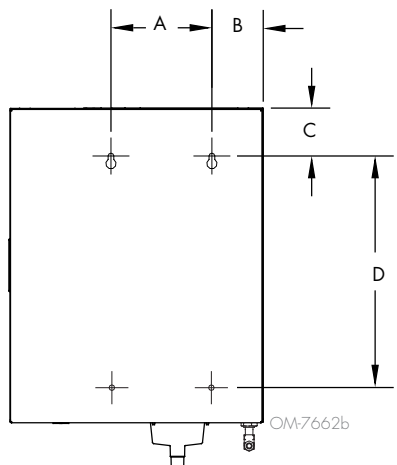
WARNING

Mount humidifier per the instructions in this manual and to a structurally stable surface. Improper mounting of the humidifier can cause it to fall or to tip, resulting in severe personal injury or death.

XT series humidifier: Indoor mounting

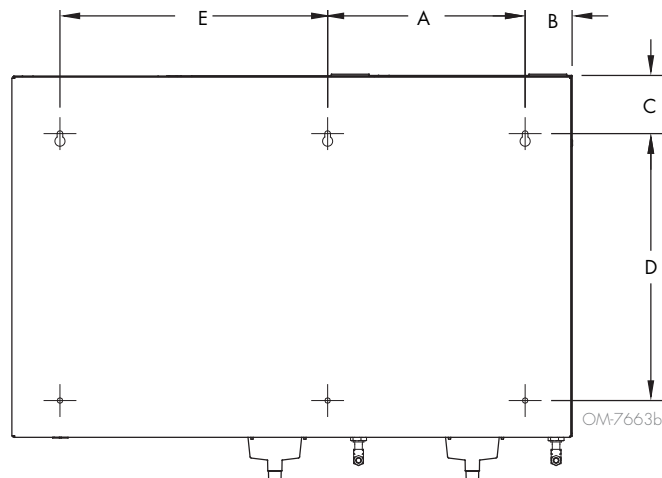
FIGURE 8-1: XT SERIES HUMIDIFIER SEISMIC CERTIFICATION OPTION WALL MOUNT INSTALLATION

Models XTS / XTP 002 through 048



Mounting hardware to be (four) 3/8" diameter grade 2 (minimum) bolts with washers, lock washers, and nuts.

Models XTP 050 through 096



Mounting hardware to be (six) 3/8" diameter grade 2 (minimum) bolts with washers, lock washers, and nuts.

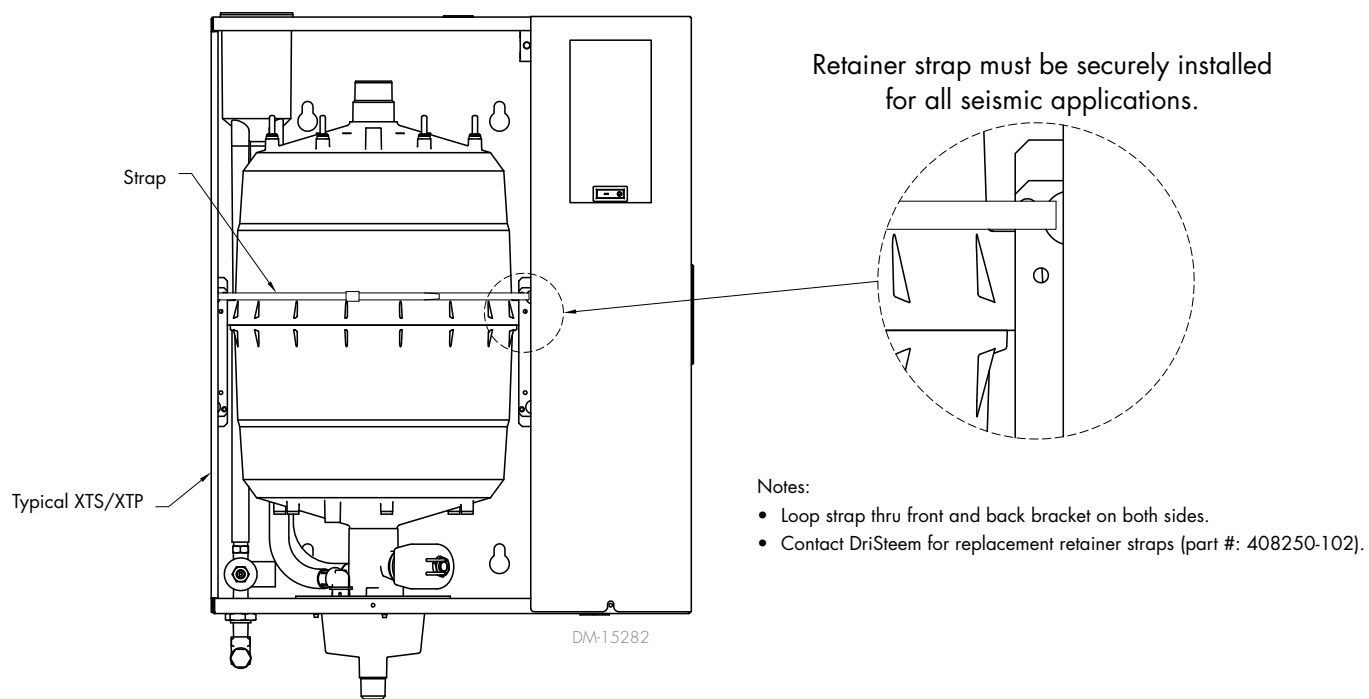
Note: Refer to the anchorage details supplied by the Structural Engineer of Record

Table 8-1:
XT Series humidifier mounting keyhole dimensions

Dimension	Model XTS / XTP							
	002, 003, 006		010, 017		025, 033, 042, 048		050*, 067*, 083*, 096*	
	inches	mm	inches	mm	inches	mm	inches	mm
A	3.9	100	7.1	180	7.5	190	14.0	356
B	3.0	75	3.6	92	3.4	86	3.3	84
C	3.2	81	4.4	112	4.1	104	4.1	104
D	14.0	355	16.3	414	18.9	480	18.9	480
E	—	—	—	—	—	—	19.0	483
* Model XTP only								

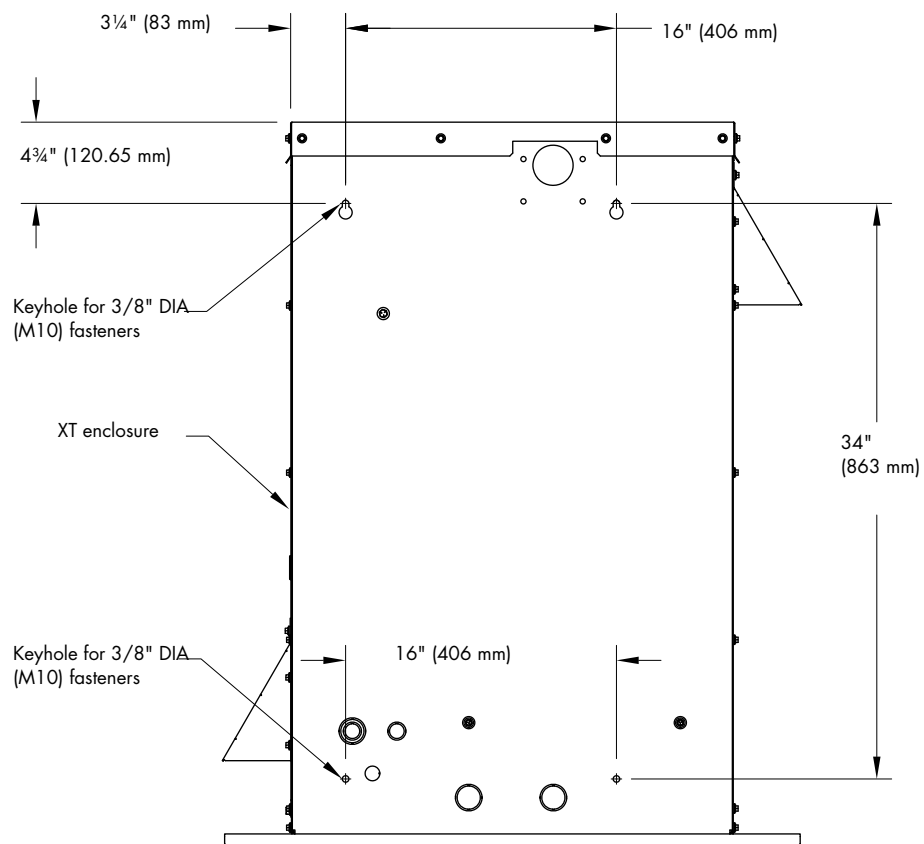
XT series humidifier: Indoor mounting

FIGURE 9-1: SEISMIC CERTIFICATION RETAINING STRAP INSTALLATION



XT series humidifier: Outdoor mounting

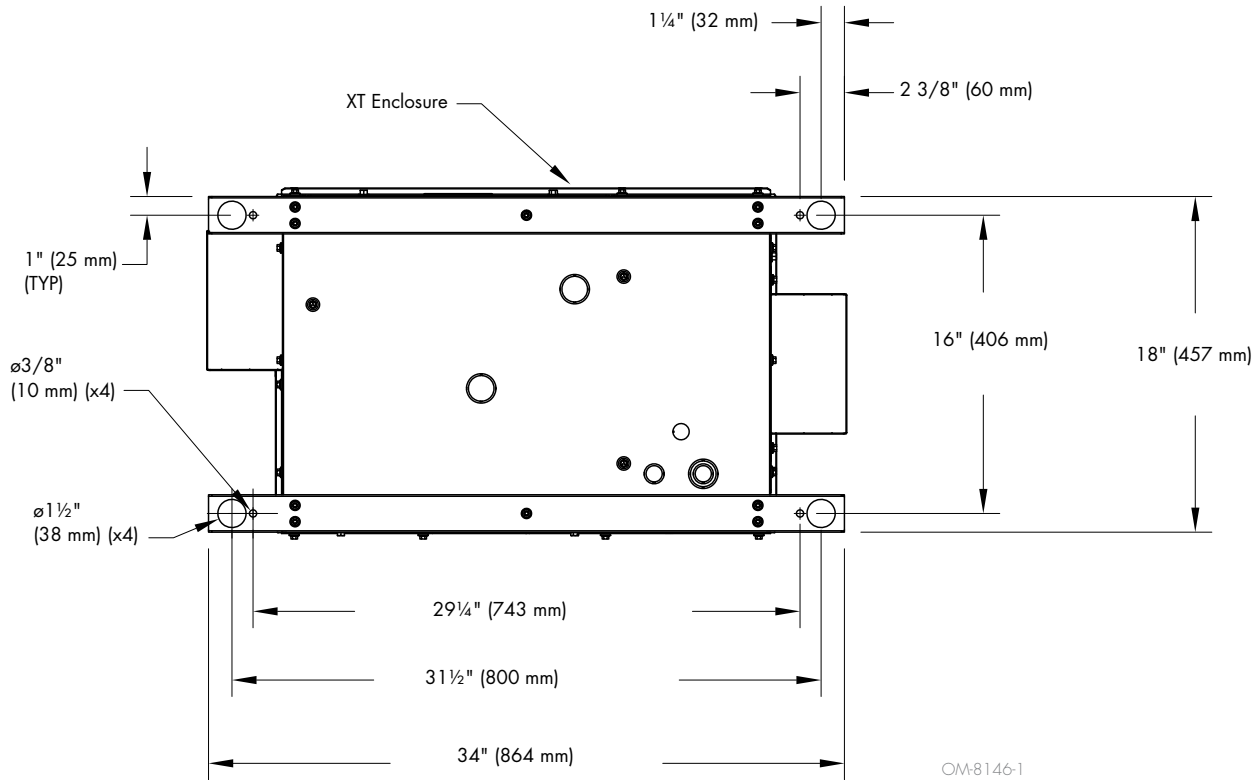
FIGURE 10-1: OUTDOOR ENCLOSURE



OM-8146

XT series humidifier: Outdoor mounting

FIGURE 11-1: XT OUTDOOR MOUNTING DIMENSIONS

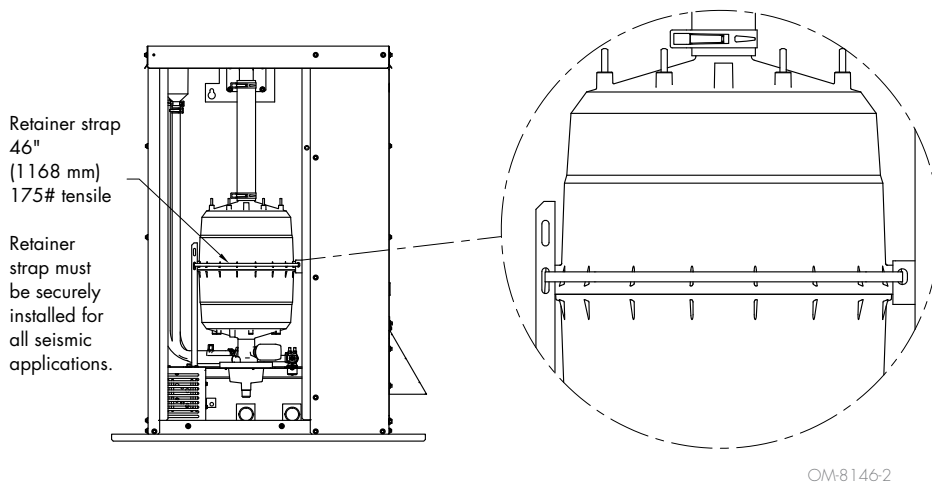


NOTES:

For all outdoor mounting methods:

- Mounting hardware to be four 3/8" diameter grade 8 bolts and washers.
- A rigid and structurally sound wall or equipment rails are required. Consult with the Structural Engineer on Record to determine acceptability of mounting structure.

FIGURE 11-2: XT OUTDOOR MOUNTING



NOTES:

- Loop strap through all slots on both side cylinder stabilizing brackets.
- Contact DriSteem for replacement retainer straps (part #: 408250-102).

RTS humidifier RX series: Mounting installation drawing

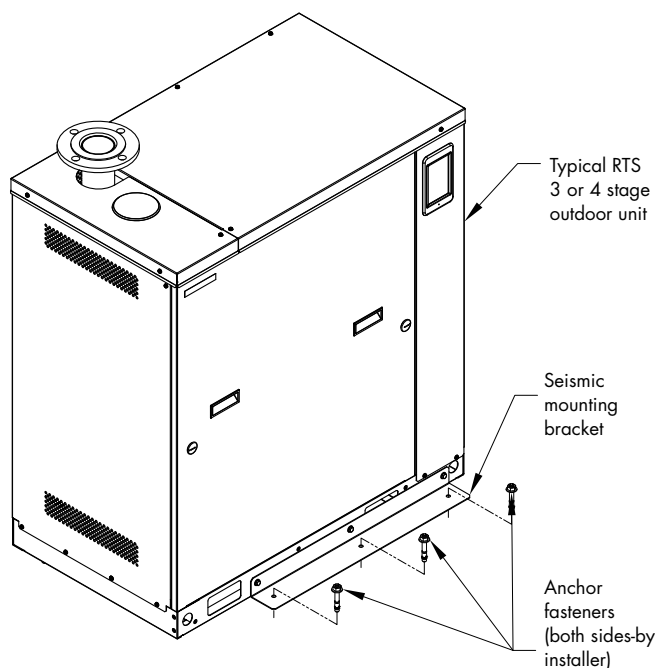
WARNING

Mount humidifier per the instructions in this manual and to a structurally stable surface. Improper mounting of the humidifier can cause it to fall or to tip, resulting in severe personal injury or death.

Refer to the RTS humidifier RX series IOM for all other installation, operation, and maintenance instructions. Complete the seismic installation as shown in Figure 12-1 and Figure 12-2.

NOTE: Use 3/8" grade 8 bolts and washers for mounting.

FIGURE 12-1: RX-XX-3 AND RX-XX-4 INDOOR FLOOR MOUNT SEISMIC CERTIFICATION INSTALLATION

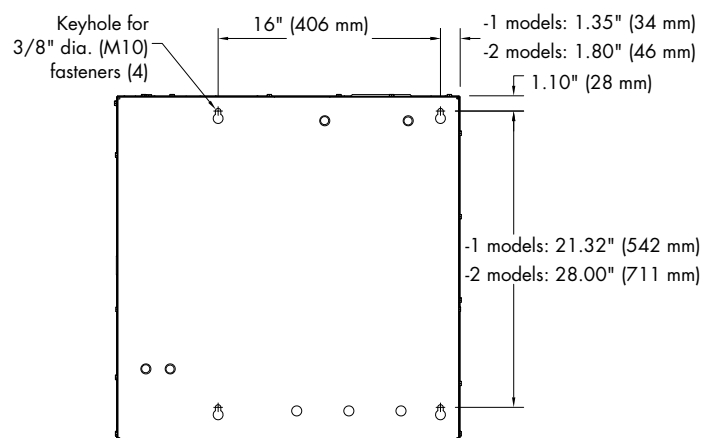


Notes:

- Use 3/8" grade 8 bolts and washers in each DriSteem seismic bracket.
- Confirm the door of unit is attached with quarter-turn before operating.

OM-8145

FIGURE 12-2: RX-XX-1 AND RX-XX-2 INDOOR WALL MOUNT SEISMIC CERTIFICATION INSTALLATION



OM-8043

Notes:

- Use 3/8" grade 8 bolts and washers in each keyhole.
- Confirm the door of unit is attached with quarter-turn before operating.

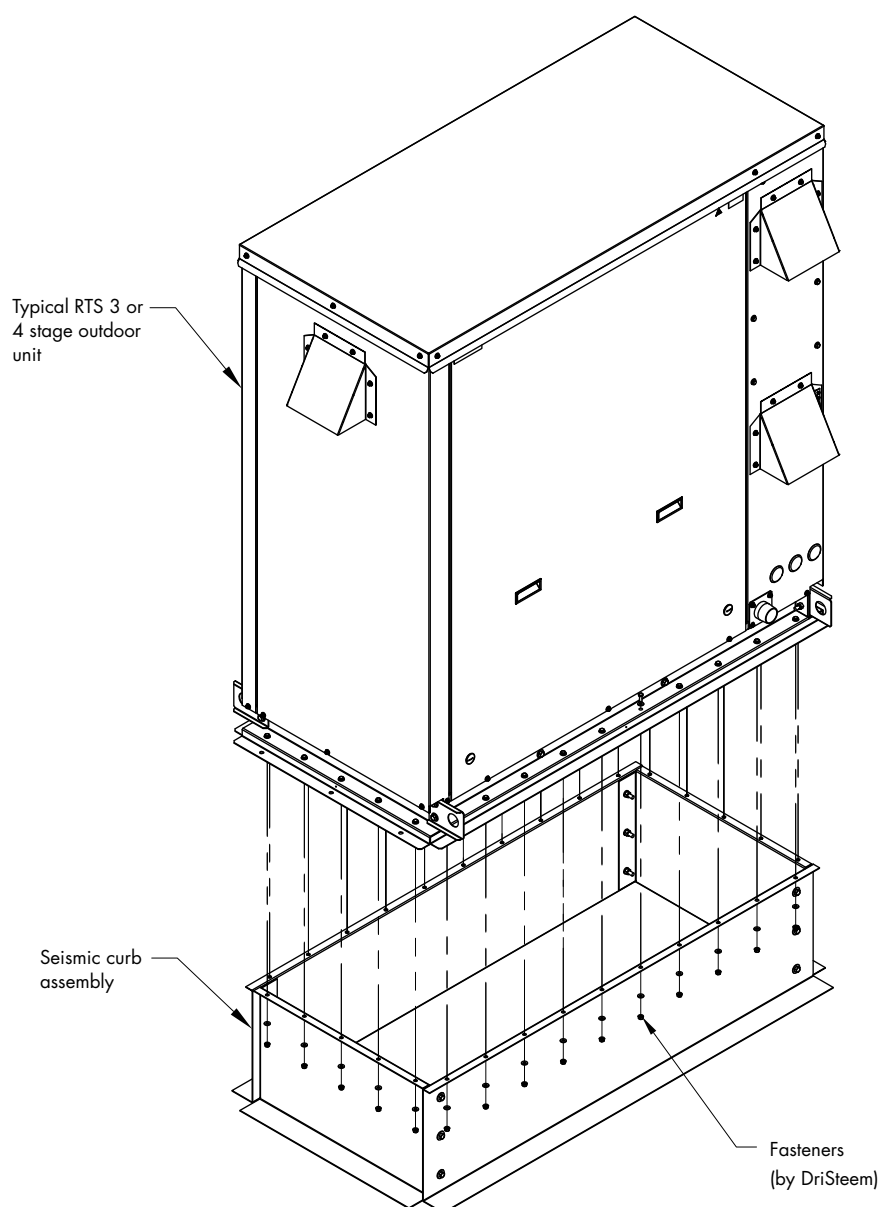
RTS humidifier RX series: Outdoor enclosure installation drawing

WARNING

Mount humidifier per the instructions in this manual and to a structurally stable surface. Improper mounting of the humidifier can cause it to fall or to tip, resulting in severe personal injury or death.

Refer to the RTS humidifier RX series IOM for all other installation, operation, and maintenance instructions. Complete the seismic installation as shown in Figure 13-1.

FIGURE 13-1: RX SERIES OUTDOOR ENCLOSURE SEISMIC CERTIFICATION CURB MOUNT OPTION INSTALLATION



Notes:

- Curb must be mounted to structure with 3/8" Grade 8 bolts and washers, spaced evenly around the perimeter every 6" on center.
- Confirm the door of unit is attached with both quarter-turn and screws before operating.
- Use a continuous bead of RTV adhesive between the curb and the humidifier.
- When base mounting with no curb, mount with six 3/8" Grade 8 bolts and washers

OM-8144

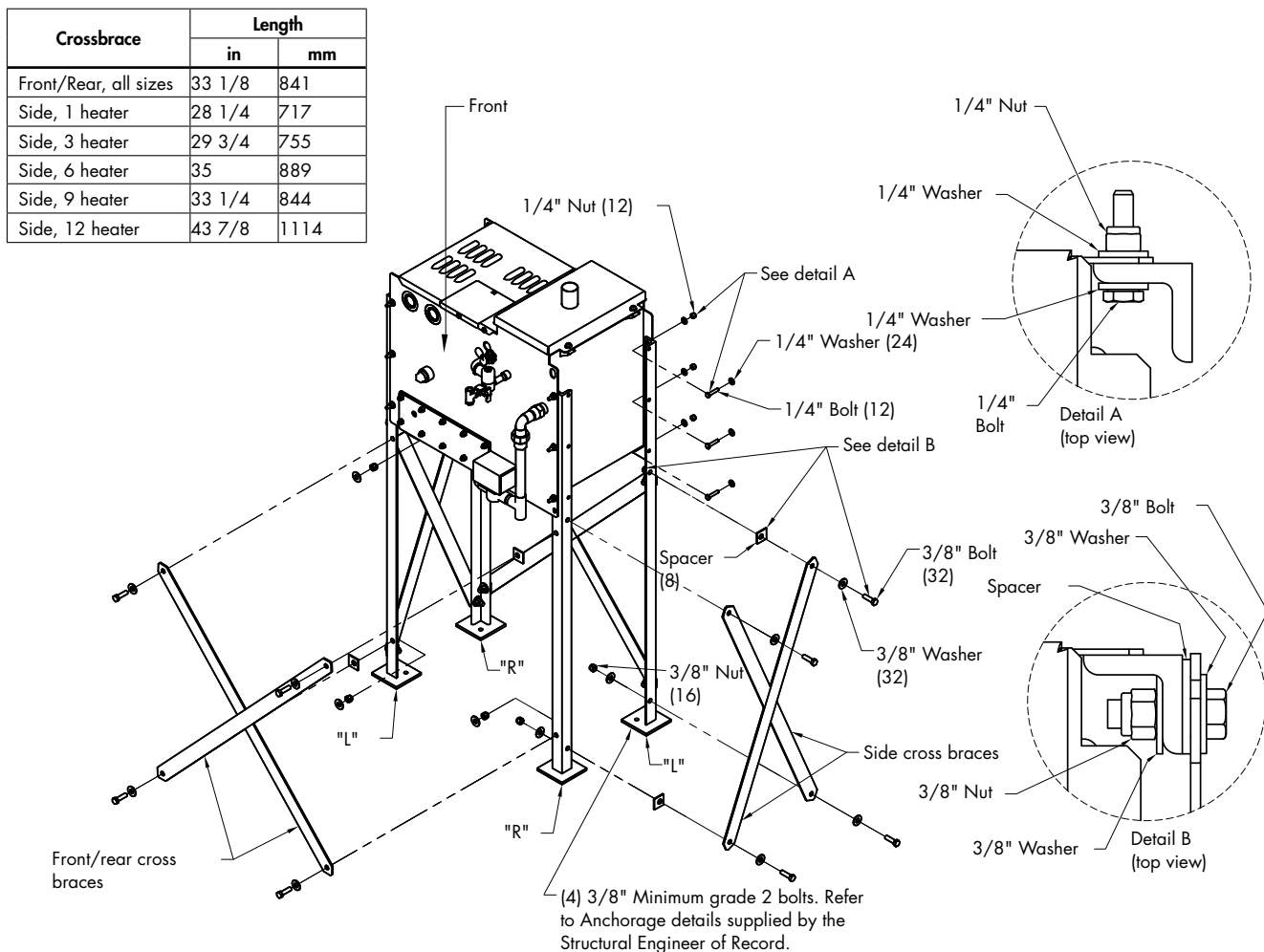
Vaporstream: Floor mount installation drawing

! WARNING

Mount humidifier per the instructions in this manual and to a structurally stable surface. Improper mounting of the humidifier can cause it to fall or to tip, resulting in severe personal injury or death.

Refer to the Vaporstream® IOM for all other installation, operation, and maintenance instructions. Complete the seismic installation as shown in Figure 14-1 and the installation steps on the next page.

FIGURE 14-1: VAPORSTREAM FLOOR MOUNT SEISMIC CERTIFICATION OPTION INSTALLATION



Notes:

1. The two leg weldments with "R" marked on the bottom of the feet are used in these locations. Holding the leg weldments so that the angle iron is in the shape of an "L" when looking at it from the top, these have the fourth hole closer to the third hole on the vertical part of the "L".
2. The height from floor to bottom of tank is 30 1/2 in (774 mm).
3. All hardware shown supplied by DriSteem.
4. All cabinet mounted keypads require captive bracket. All controllers require captive standoffs.

DW-11906

Vaporstream: Floor mount installation steps

1. Attach legs to tank assembly - See Detail A in Figure 14-1.
 - a. Vaporstream with remote control cabinet - identify "Front Right" and "Back Left" leg weldments. Side of the tank with drain assembly and clean-out plate is front.
 - Weldments marked "L" on the bottom of feet are used in "Front Left" and "Back Right" locations.
 - Use 1/4"-20 x 1 1/4" bolts to attach leg weldments to tank. Use all three bolt locations on all legs.
 - Leave these bolts loose until after cross braces are completely assembled and tightened (Step 2).
 - b. Vaporstream with control cabinet factory mounted on humidifier - identify "Front Right" and "Back Left" leg weldments. Side of the tank with drain assembly and clean-out plate is considered front. See Figure 14-1 for front view callout. Callout will help orientation during installation.
 - Remove the control cabinet from tank and support it within range of motion the flexible conduit allows.
 - Two weldments, marked "L" on the bottom of feet, are used in "Front Left" and "Back Right" locations.
 - Use included 1/4"-20 x 1 1/4" bolts to attach leg weldments to tank. Use all three bolt locations on all legs.

Note: Available space between control cabinet brackets and tank flange is tight. It is recommended to insert bolts and washers through the holes in leg assembly and tape them in place before assembling them to tank. Once washers and nuts are started on bolts, tape can be removed.

 - Leave bolts loose until after cross braces are completely assembled and tightened (Step 2).
2. Attach cross-braces to legs - See Detail B in Figure 14-1.
 - a. Use square spacers on one of each side's set of cross-braces. Vaporstream with control cabinet factory mounted on humidifier:
 - Attach the cross-braces on the control cabinet side.
 - Attach cross-braces to legs.
 - Depending on tank and control cabinet size there may be slots in the control cabinet support brackets. Insert cross-braces through slots.
 - Torque all cross brace bolts to 30 ft-lbs (40.7 N-m).
 - Replace control cabinet onto tank.
3. Torque all leg bolts to 8 ft-lbs (10.8 N-m).
4. Attach legs to support structure using all four bolt hole locations and in accordance with instructions by the Structural Engineer of Record.

WARNING

Mount humidifier per the instructions in this manual and to a structurally stable surface. Improper mounting of the humidifier can cause it to fall or to tip, resulting in severe personal injury or death.

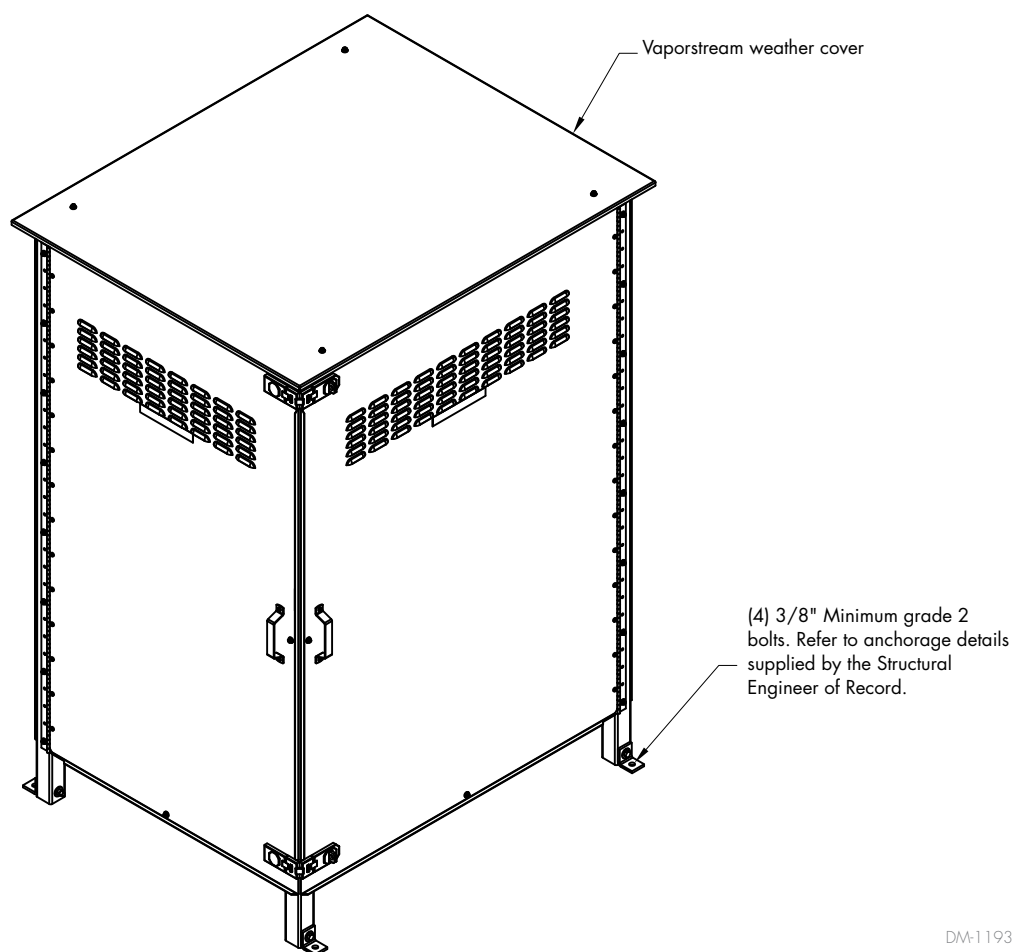
Vaporstream: Weather cover installation drawing

! WARNING

Mount humidifier per the instructions in this manual and to a structurally stable surface. Improper mounting of the humidifier can cause it to fall or to tip, resulting in severe personal injury or death.

Refer to the Vaporstream IOM for all other installation, operation, and maintenance instructions. Complete the seismic installation as shown in Figure 16-1.

FIGURE 16-1: VAPORSTREAM WEATHER COVER SEISMIC CERTIFICATION OPTION INSTALLATION



DM-11937

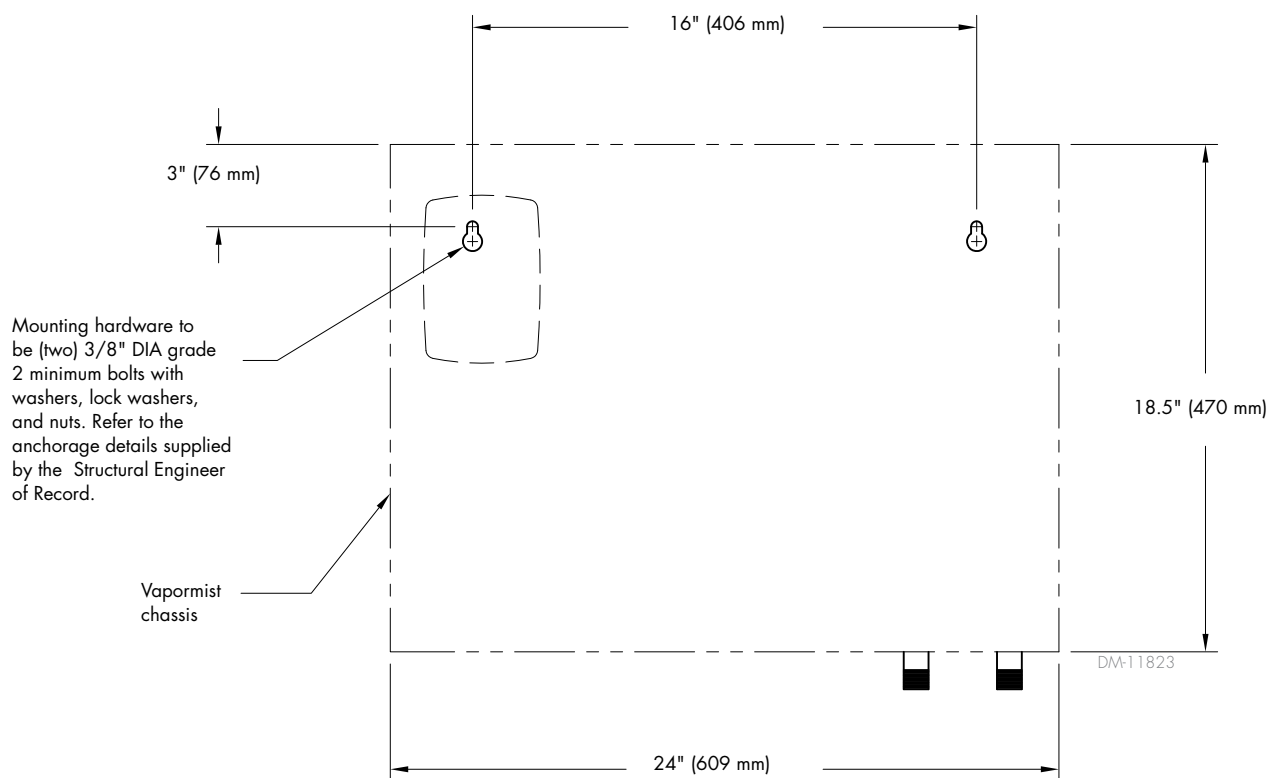
Vapormist: Wall mount installation drawing

Refer to the Vapormist® IOM for all other installation, operation, and maintenance instructions. Complete the seismic installation as shown in Figure 17-1.

WARNING

Mount humidifier per the instructions in this manual and to a structurally stable surface. Improper mounting of the humidifier can cause it to fall or to tip, resulting in severe personal injury or death.

FIGURE 17-1: VAPORMIST SEISMIC CERTIFICATION OPTION WALL MOUNT INSTALLATION



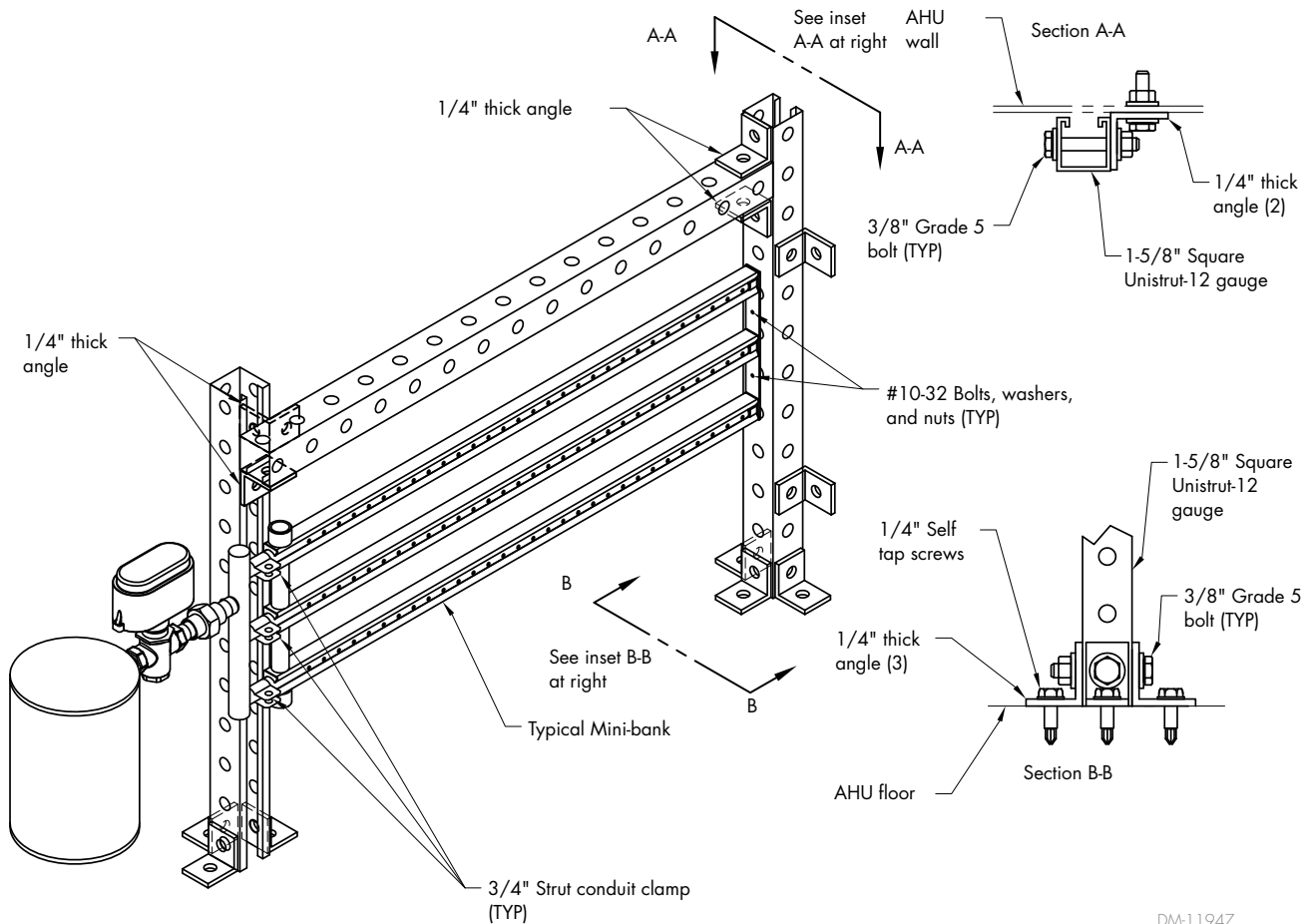
Mini-bank: Installation drawing in an air handling unit

! WARNING

Mount humidifier per the instructions in this manual and to a structurally stable surface. Improper mounting of the humidifier can cause it to fall or to tip, resulting in severe personal injury or death.

Refer to the Steam Injection IOM for all other installation, operation, and maintenance instructions. Complete the seismic installation as shown in Figure 18-1.

FIGURE 18-1: MINI-BANK SEISMIC CERTIFICATION OPTION INSTALLATION IN AN AIR HANDLING UNIT



DM-11947

Note: Use Nylon style locking nuts on all UniStrut hardware connections.

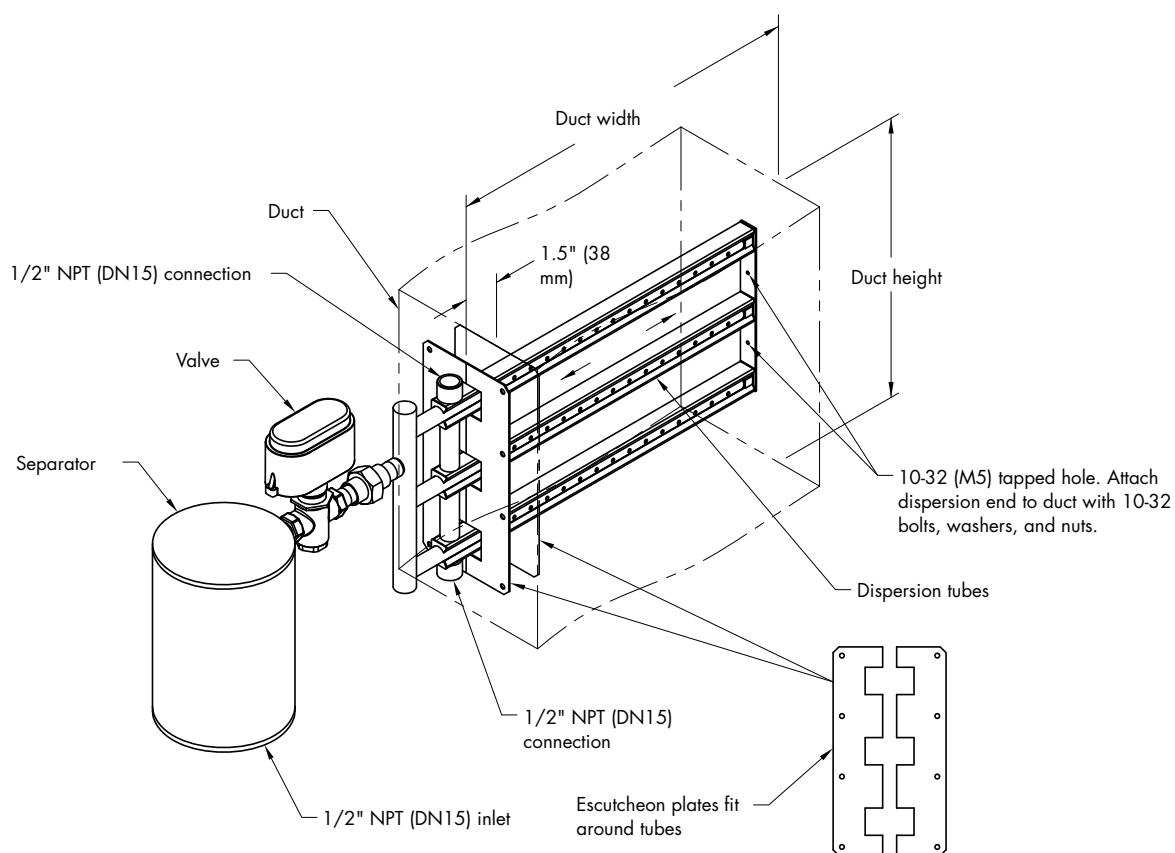
Mini-bank: Installation drawing in a duct

Refer to the Steam Injection IOM for all other installation, operation, and maintenance instructions. Complete the seismic installation as shown in Figure 19-1.

! WARNING

Mount humidifier per the instructions in this manual and to a structurally stable surface. Improper mounting of the humidifier can cause it to fall or to tip, resulting in severe personal injury or death.

FIGURE 19-1: MINI-BANK SEISMIC CERTIFICATION OPTION INSTALLATION IN A DUCT



DW-11946

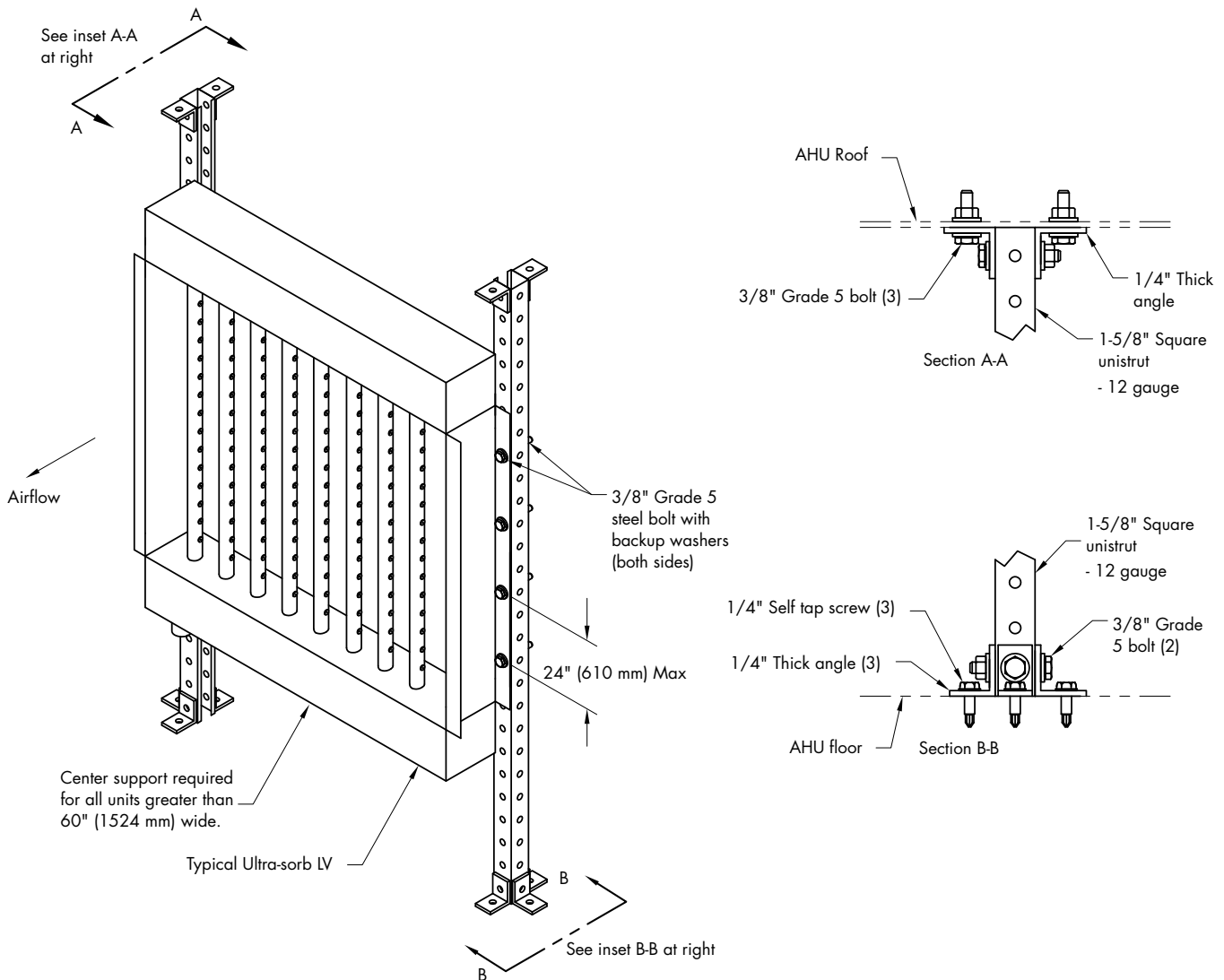
Ultra-sorb: Model LV Installation drawing in an air handling unit

! WARNING

Mount humidifier per the instructions in this manual and to a structurally stable surface. Improper mounting of the humidifier can cause it to fall or to tip, resulting in severe personal injury or death.

Refer to the Ultra-sorb® Models LV and LH IOM for all other installation, operation, and maintenance instructions. Complete the seismic installation as shown in Figure 20-1.

FIGURE 20-1: ULTRA-SORB MODEL LV SEISMIC CERTIFICATION OPTION INSTALLATION IN AN AIR HANDLING UNIT



Notes:

- Use Nylon style locking nuts on all UniStrut hardware connections.
- Air handling unit end wall or lateral bracing shall be spaced at no great than 96" (2438 mm) o.c.

DM-11805

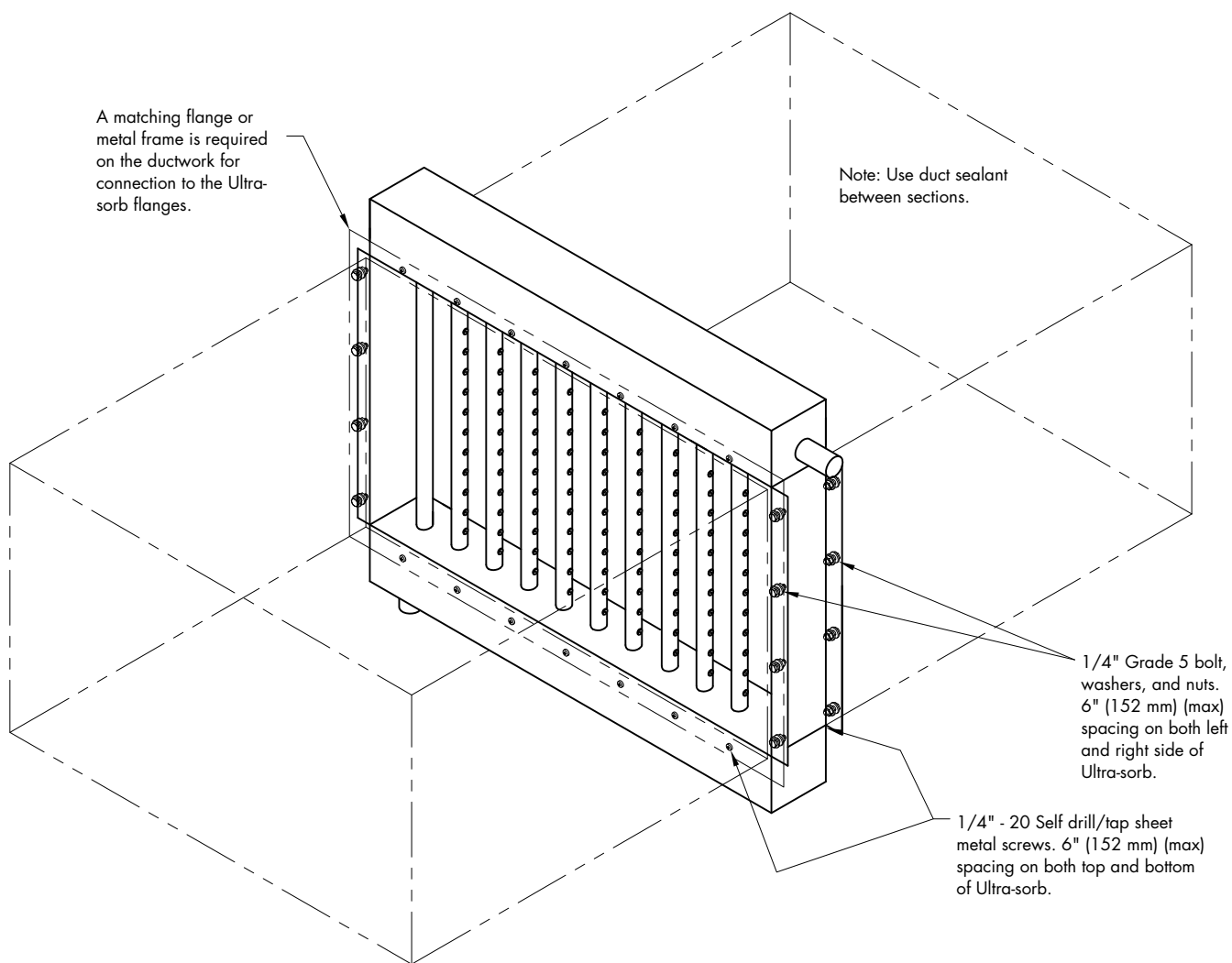
Ultra-sorb: Model LV Installation drawing in a duct

Refer to the Ultra-sorb Models LV and LH IOM for all other installation, operation, and maintenance instructions. Complete the seismic installation as shown in Figure 21-1.

WARNING

Mount humidifier per the instructions in this manual and to a structurally stable surface. Improper mounting of the humidifier can cause it to fall or to tip, resulting in severe personal injury or death.

FIGURE 21-1: ULTRA-SORB MODEL LV SEISMIC CERTIFICATION OPTION INSTALLATION IN A DUCT



Note:

- To avoid damaging the header, screws and drill bits must not penetrate more than 3/4" (20 mm) into the header assembly.

DM-11822

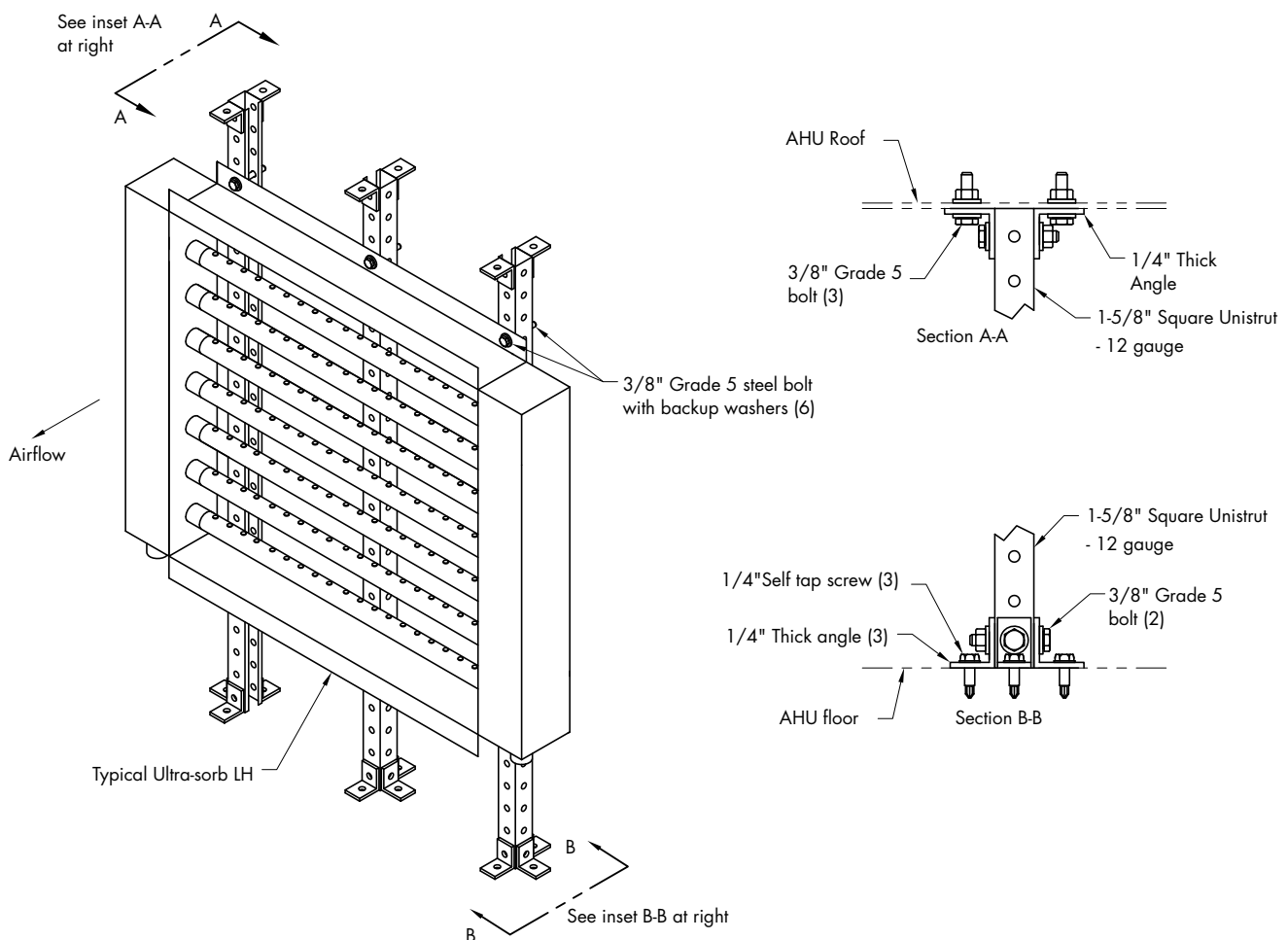
Ultra-sorb: Model LH Installation drawing in an air handling unit

! WARNING

Mount humidifier per the instructions in this manual and to a structurally stable surface. Improper mounting of the humidifier can cause it to fall or to tip, resulting in severe personal injury or death.

Refer to the Ultra-sorb Models LV and LH IOM for all other installation, operation, and maintenance instructions. Complete the seismic installation as shown in Figure 22-1.

FIGURE 22-1: ULTRA-SORB MODEL LH SEISMIC CERTIFICATION OPTION INSTALLATION IN AN AIR HANDLING UNIT



Notes:

- Use Nylon style locking nuts on all UniStrut hardware connections.
- Air handling unit end wall or lateral bracing shall be spaced at no greater than 96" (2438 mm) o.c.

DM-11814

Ultra-sorb: Model LH Installation drawing in a duct

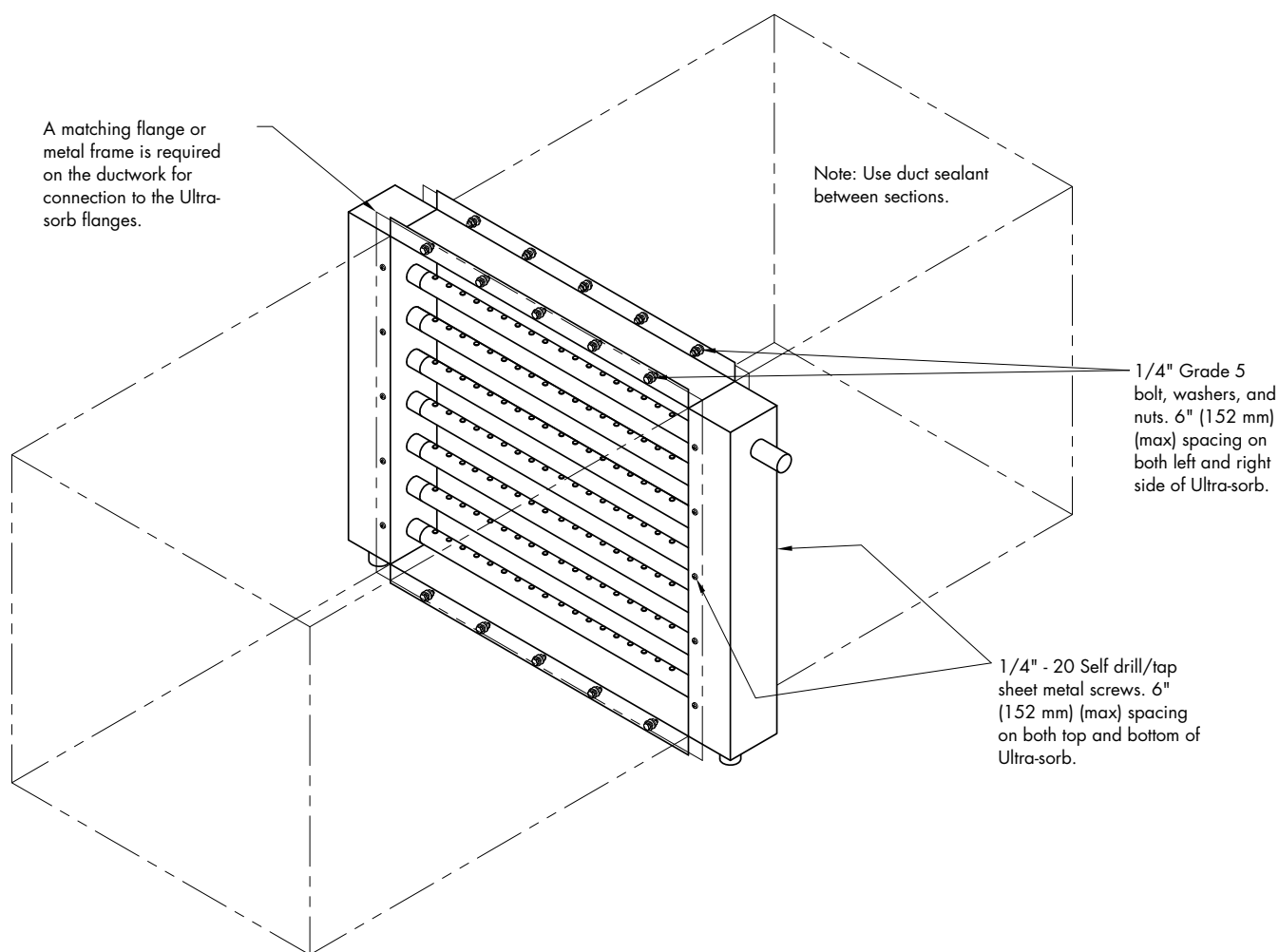
Refer to the Ultra-sorb Models LV and LH IOM for all other installation, operation, and maintenance instructions. Complete the seismic installation as shown in Figure 23-1.

Note: For Model LH, seismic certification is only available with horizontal airflow.

WARNING

Mount humidifier per the instructions in this manual and to a structurally stable surface. Improper mounting of the humidifier can cause it to fall or to tip, resulting in severe personal injury or death.

FIGURE 23-1: ULTRA-SORB MODEL LH SEISMIC CERTIFICATION OPTION INSTALLATION IN A DUCT



Note:

- To avoid damaging the header, screws and drill bits must not penetrate more than 3/4" (20 mm) into the header assembly.

DM-11829

Ultra-sorb: Model XV Installation drawing in an air handling unit

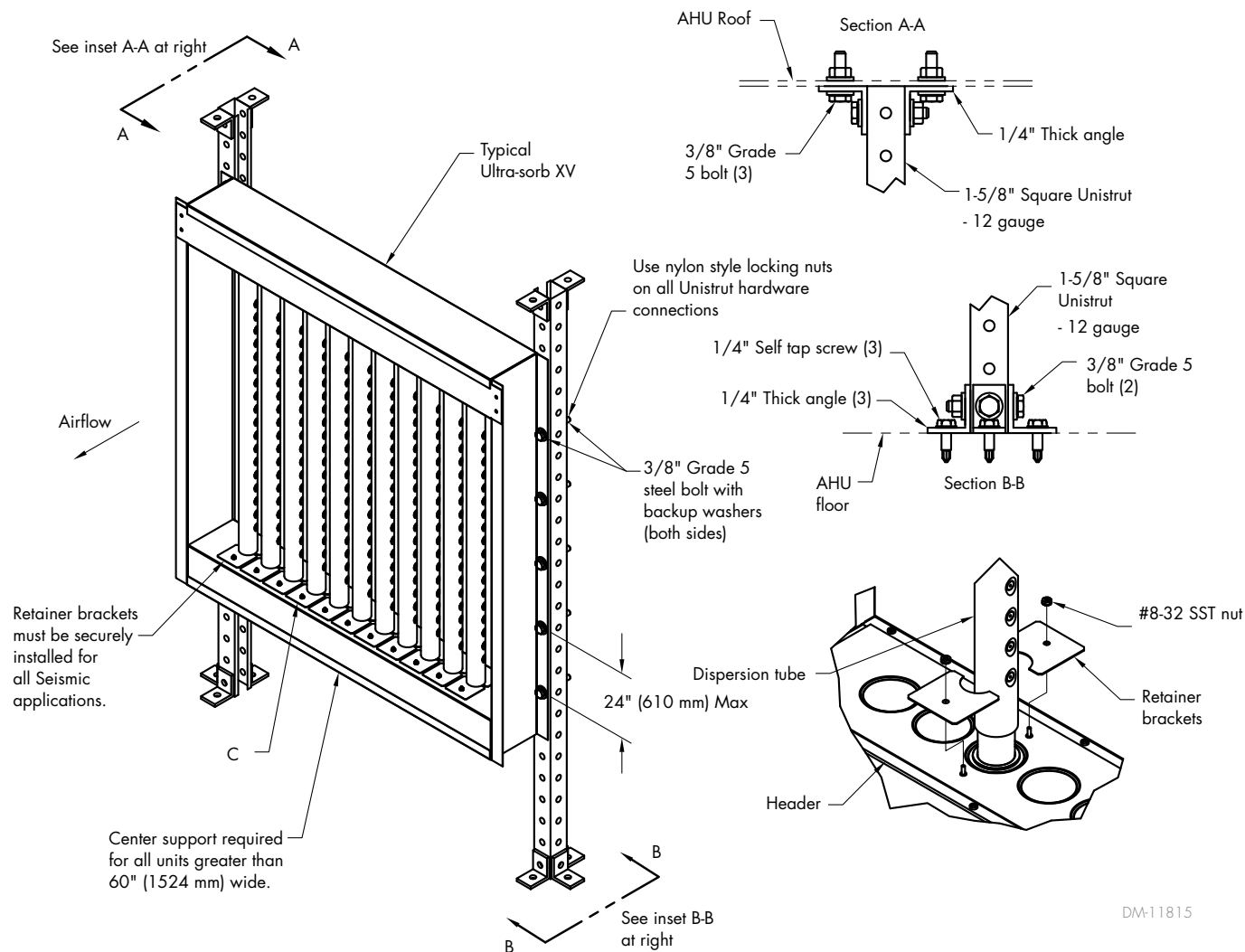
! WARNING

Mount humidifier per the instructions in this manual and to a structurally stable surface. Improper mounting of the humidifier can cause it to fall or to tip, resulting in severe personal injury or death.

mc_020212_1059

Refer to the Ultra-sorb Model XV IOM for all other installation, operation, and maintenance instructions. Complete the seismic installation as shown in Figure 24-1.

FIGURE 24-1: ULTRA-SORB MODEL XV SEISMIC CERTIFICATION OPTION INSTALLATION IN AN AIR HANDLING UNIT



DM-11815

Notes:

- Use Nylon style locking nuts on all UniStrut hardware connections.
- Air handling unit end wall or lateral bracing shall be spaced at no great than 96" (2438 mm) o.c.

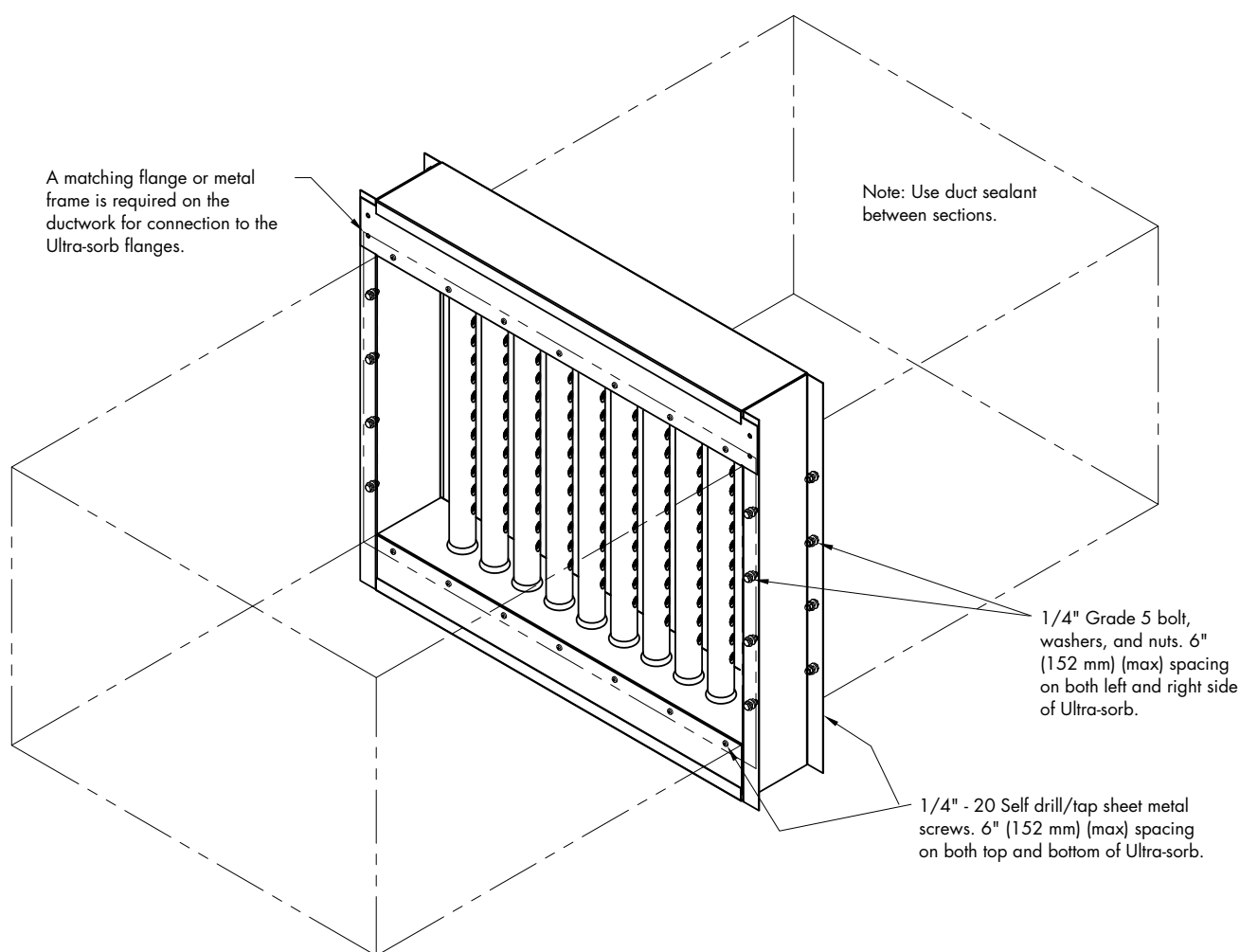
Ultra-sorb: Model XV Installation drawing in a duct

Refer to the Ultra-sorb Model XV IOM for all other installation, operation, and maintenance instructions. Complete the seismic installation as shown in Figure 25-1.

WARNING

Mount humidifier per the instructions in this manual and to a structurally stable surface. Improper mounting of the humidifier can cause it to fall or to tip, resulting in severe personal injury or death.

FIGURE 25-1: ULTRA-SORB MODEL XV SEISMIC CERTIFICATION OPTION INSTALLATION IN A DUCT



Note:

- To avoid damaging the header, screws and drill bits must not penetrate more than 3/4" (20 mm) into the header assembly.

DM-11844

Ultra-sorb: Model MP Installation drawing in an air handling unit

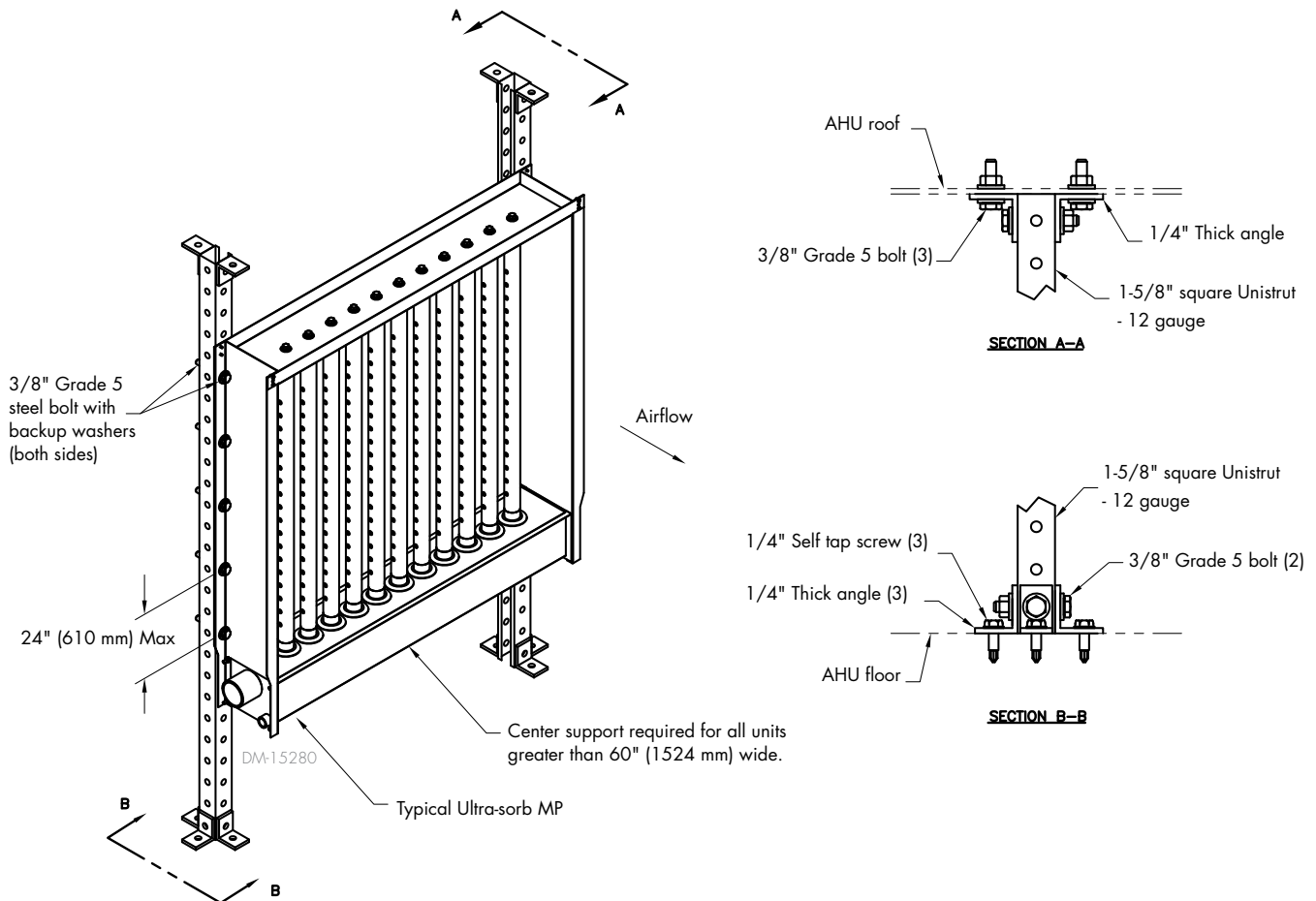
WARNING

Mount humidifier per the instructions in this manual and to a structurally stable surface. Improper mounting of the humidifier can cause it to fall or to tip, resulting in severe personal injury or death.

mc_020212_1059

Refer to the Ultra-sorb Model MP IOM for all other installation, operation, and maintenance instructions. Complete the seismic installation as shown in Figure 24-1.

FIGURE 26-1: ULTRA-SORB MODEL MP SEISMIC CERTIFICATION OPTION INSTALLATION IN AN AIR HANDLING UNIT



Notes:

- Use Nylon style locking nuts on all UniStrut hardware connections.
- Air handling unit end wall or lateral bracing shall be spaced at no great than 96" (2438 mm) o.c.

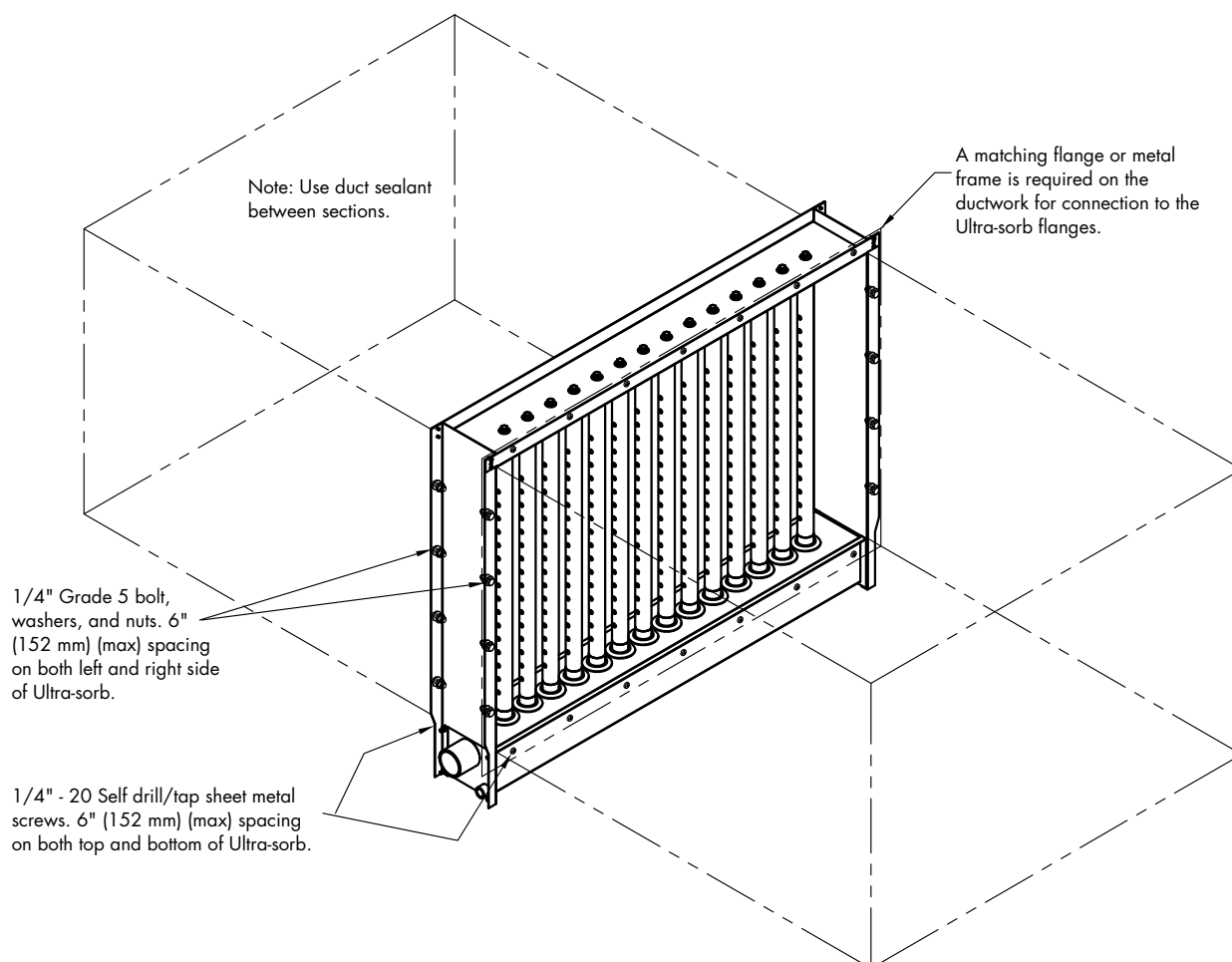
Ultra-sorb: Model MP Installation drawing in a duct

Refer to the Ultra-sorb Model MP IOM for all other installation, operation, and maintenance instructions. Complete the seismic installation as shown in Figure 25-1.

WARNING

Mount humidifier per the instructions in this manual and to a structurally stable surface. Improper mounting of the humidifier can cause it to fall or to tip, resulting in severe personal injury or death.

FIGURE 27-1: ULTRA-SORB MODEL MP SEISMIC CERTIFICATION OPTION INSTALLATION IN A DUCT



Note:

- To avoid damaging the header, screws and drill bits must not penetrate more than 3/4" (20 mm) into the header assembly.

DM-15281

Notes

Expect quality from the industry leader

Since 1965, DriSteem has led the industry with innovative methods for humidifying and cooling air with precise control. Our focus on ease of ownership is evident in the design of the Wetted Media System. DriSteem also leads the industry with a Two-year Limited Warranty and optional extended warranty.

For more information

www.dristeem.com
sales@dristeem.com

For the most recent product information
visit our website: www.dristeem.com

DRI-STEEM Corporation

a subsidiary of Research Products Corporation
DriSteem U.S. operations are ISO 9001:2015
certified

U.S. Headquarters:
14949 Technology Drive
Eden Prairie, MN 55344
800-328-4447 or 952-949-2415
952-229-3200 (fax)

Continuous product improvement is a policy of DriSteem; therefore, product features and specifications are subject to change without notice.

DriSteem, STS, GTS, RTS, Ultra-sorb, Vapor-logic, Vapormist, and Vaporstream are registered trademarks of Research Products Corporation and are filed for trademark registration in Canada and the European community.

Product and corporate names used in this document may be trademarks or registered trademarks. They are used for explanation only without intent to infringe.

© 2022 Research Products Corporation

Form No. SEISMIC-IOM-EN-REVG-0822
Part No. 890000-450 Rev G

TWO-YEAR LIMITED WARRANTY

DRI-STEEM Corporation ("DriSteem") warrants to the original user that its products will be free from defects in materials and workmanship for a period of two (2) years after installation or twenty-seven (27) months from the date DriSteem ships such product, whichever date is the earlier.

If any DriSteem product is found to be defective in material or workmanship during the applicable warranty period, DriSteem's entire liability, and the purchaser's sole and exclusive remedy, shall be the repair or replacement of the defective product, or the refund of the purchase price, at DriSteem's election. DriSteem shall not be liable for any costs or expenses, whether direct or indirect, associated with the installation, removal or reinstallation of any defective product. Excluded from the Limited Warranty are all consumable and wear and tear items such as cylinders, membranes, filters, or media replacements. These items are subject to usual wear and tear during usage.

DriSteem's Limited Warranty shall not be effective or actionable unless there is compliance with all installation and operating instructions furnished by DriSteem, or if the products have been modified or altered without the written consent of DriSteem, or if such products have been subject to accident, misuse, mishandling, tampering, negligence or improper maintenance. Any warranty claim must be submitted to DriSteem in writing within the stated warranty period. Defective parts may be required to be returned to DriSteem. Excluded from the Limited Warranty are all consumable and wear and tear items such as cylinders, membranes, filters, or media replacements. These items are subject to usual wear and tear during usage.

DriSteem's Limited Warranty is made in lieu of, and DriSteem disclaims all other warranties, whether express or implied, including but not limited to any IMPLIED WARRANTY OF MERCHANTABILITY, ANY IMPLIED WARRANTY OF FITNESS FOR A PARTICULAR PURPOSE, any implied warranty arising out of a course of dealing or of performance, custom or usage of trade.

DriSteem SHALL NOT, UNDER ANY CIRCUMSTANCES BE LIABLE FOR ANY DIRECT, INDIRECT, INCIDENTAL, SPECIAL OR CONSEQUENTIAL DAMAGES (INCLUDING, BUT NOT LIMITED TO, LOSS OF PROFITS, REVENUE OR BUSINESS) OR DAMAGE OR INJURY TO PERSONS OR PROPERTY IN ANY WAY RELATED TO THE MANUFACTURE OR THE USE OF ITS PRODUCTS. The exclusion applies regardless of whether such damages are sought based on breach of warranty, breach of contract, negligence, strict liability in tort, or any other legal theory, even if DriSteem has notice of the possibility of such damages.

By purchasing DriSteem's products, the purchaser agrees to the terms and conditions of this Limited Warranty.

EXTENDED WARRANTY

The original user may extend the term of the DriSteem Limited Warranty for a limited number of months past the initial applicable warranty period and term provided in the first paragraph of this Limited Warranty. All the terms and conditions of the Limited Warranty during the initial applicable warranty period and term shall apply during any extended term. An extended warranty term of an additional twelve (12) months or twenty four (24) months of coverage may be purchased. The extended warranty term may be purchased until eighteen (18) months after the product is shipped, after which time no extended warranties are available. When a DriSteem humidifier is purchased with a DriSteem RO system, an extended twenty-four (24) month coverage is included.

Any extension of the Limited Warranty under this program must be in writing, signed by DriSteem, and paid for in full by the purchaser.