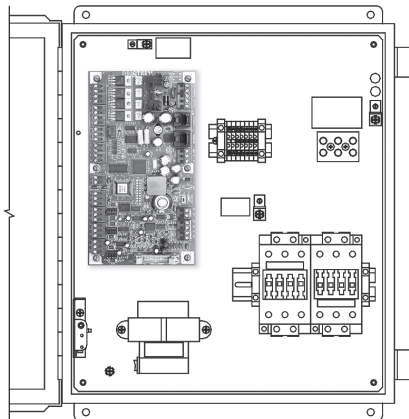


Vapor-logic® version 3 to Vapor-logic version 6 Field Conversion Instructions: CRUV® Humidifiers

The drawing at right depicts the Vapor-logic version 3 board orientation in a CRUV humidifier control cabinet without SSRs. The board would be oriented horizontally in a control cabinet with the SSR option.

These instructions pertain only to CRUV humidifier units with Vapor-logic control. This does not apply to CRUV units with the standard onboard controller.

Vapor-logic version 3 board in a control cabinet



1. Leave the wires connected to the Vapor-logic version 3 board terminals. Use needlenose pliers to pull the terminals off of the pins.
2. Remove the six screws holding the Vapor-logic version 3 board to the subpanel, and remove the board. When removing the screws, take care to prevent the standoffs behind the board from falling down the subpanel and into other electrical components.

Note: The Vapor-logic version 6 board has adhesive-backed standoffs that adhere to the subpanel. For the best adhesion, make sure the subpanel surface is clean and dry.

3. Note the Vapor-logic version 6 board orientation shown in Figure 3-1. Remove the adhesive backing paper from the Vapor-logic version 6 board standoffs, and press the Vapor-logic version 6 board onto the subpanel as close as possible to the original footprint of the Vapor-logic version 3 board.
4. See Figure 3-1. The Vapor-logic version 3 disconnections and Vapor-logic version 6 connections needed for this conversion are labeled.

Note: If any wires are too short to reach their new locations on the Vapor-logic version 6 board, add pigtail extensions to them.

5. Skip this step if the humidifier does not have the SSR option: Disconnect wire #434 from Vapor-logic version 3 terminal **34**, and connect it to Vapor-logic version 6 P19 plug terminal **+SSR**. Disconnect wire #435 from Vapor-logic version 3 terminal **35**, and connect it to Vapor-logic version 6 P19 plug terminal **-BL**.
6. Disconnect the wires from Vapor-logic version 3 terminals 1, 3, and 5, and connect them to the following Vapor-logic version 6 P17 plug terminals: Connect wire #401 to **FILL**, wire #403 to **DRAIN**, and wire #405 **CT1**.

WARNING

Fire and electrical shock hazards

This page provides important safety instructions; it is intended to supplement — not replace — the humidifier's Installation, Operation, and Maintenance Manual (IOM). Read the IOM that was provided with the humidifier before performing service or maintenance procedures on any part of the system. Failure to follow all warnings and instructions could produce the hazardous situations described here and in the IOM, resulting in property damage, personal injury, or death.

If the IOM is missing, go to www.dristeem.com to download a replacement.

Improper installation, adjustment, alteration, service, maintenance, or use can cause fire, electrical shock, and other hazardous conditions. These hazardous conditions could cause personal injury, property damage, or death.

To prevent hazardous conditions, read all warnings; lock all power disconnect switches in the OFF position before removing any access panels; and consult a qualified installer, service agency, or your distributor or branch for information or assistance. The qualified installer or agency must use only factory authorized and listed kits or accessories when modifying this product.

Note: If literature shipped with the humidifier is not available, historical literature is available at www.dristeem.com.

DriSteem humidifiers are warranted according to the terms and conditions of the standard two-year Limited Warranty effective when the humidifier was purchased. See the literature that was shipped with the humidifier for warranty information.

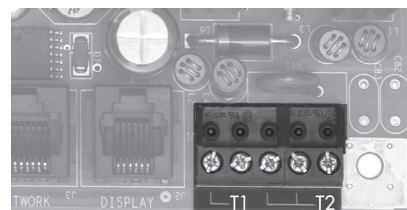
mc_081308_1405

7. Disconnect wires #402, #404, and #406 from Vapor-logic version 3 terminals **2**, **4**, and **6**. Tie them together, and pigtail them to a single common that goes to a DIN rail terminal **c**.

There are no dedicated common terminals on the Vapor-logic version 6 board. That is why, in this step, the Vapor-logic version 3 commons get tied together and pigtailed to a single wire connected to DIN rail terminal **c**. These terminals are rated for only two wires, so not all commons can be run back to them. See the gray text box in Figure 3-1.

8. Disconnect wire #415 from Vapor-logic version 3 terminal **15**, and connect it to DIN rail terminal **h**.
9. Disconnect the wires from Vapor-logic version 3 terminals **14**, **19**, and **20**, and connect them to the following Vapor-logic version 6 P4 plug terminals: Connect wire #414 to **lsw**, wire #419 to **TT**, and wire #420 to \perp .
10. Connect a new wire to the Vapor-logic version 6 P3 plug terminal **LW** and to DIN rail terminal **T3**.
11. Disconnect wires #801 and #000 from Vapor-logic version 3 terminals **T1** and **T2**. If the terminals are not marked, see the photo at right. Connect the wires to the following Vapor-logic version 6 P1 plug terminals: Connect wire #801 to **24VAC** and wire #000 to \perp .

Lower-right corner of Vapor-logic version 3 board



12. *Humidifier with tap/softened water:*

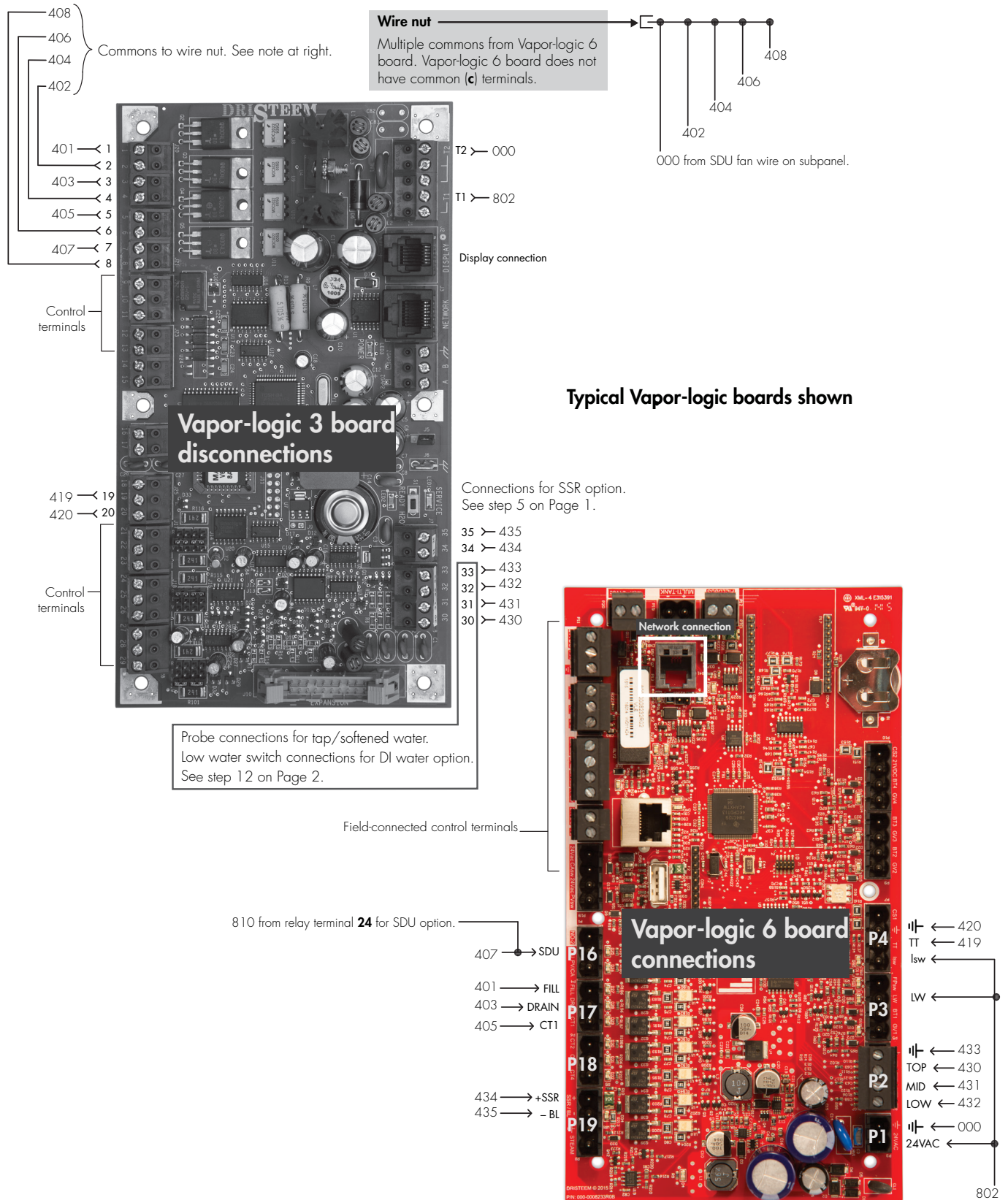
Disconnect the wires from Vapor-logic version 3 terminals **30**, **31**, **32**, **33**, and connect them to the following Vapor-logic version 6 P2 plug terminals: Connect wire #430 to **TOP**, wire #431 to **MID**, wire #432 to **LOW**, and wire #433 to \perp .

Humidifier with the DI water option:

Disconnect the wires from Vapor-logic version 3 terminals **32** and **33**, and connect them to the following Vapor-logic version 6 P2 plug terminals: Connect wire #432 to **LOW** and wire #433 to \perp .

13. The kit was shipped with a Vapor-logic version 6 keypad/display. Re-use the cable between the Vapor-logic board and keypad. Plug one end of the cable into the Vapor-logic version 6 keypad/display, and plug the other end into the Vapor-logic version 6 board display connection (shown in Figure 3-1).
14. External connections: Refer to the Vapor-logic version 3 wiring diagram and the Vapor-logic version 6 external connection requirements in the *VL-1* wiring diagram shipped with the conversion kit.

FIGURE 3-1: VAPOR-LOGIC VERSION 3 BOARD DISCONNECTIONS AND VAPOR-LOGIC VERSION 6 BOARD CONNECTIONS



Expect quality from the industry leader

Since 1965, DriSteem has led the industry with innovative methods for humidifying and cooling air with precise control. Our focus on ease of ownership is evident in the design of the Vapor-logic controller. DriSteem also leads the industry with a Two-year Limited Warranty and optional extended warranty.

For more information

www.dristeem.com
sales@dristeem.com

For the most recent product information
visit our website: www.dristeem.com

DRI-STEEM Corporation

a subsidiary of Research Products Corporation
DriSteem U.S. operations are ISO 9001:2015
certified

U.S. Headquarters:
14949 Technology Drive
Eden Prairie, MN 55344
800-328-4447 or 952-949-2415
952-229-3200 (fax)

European office:
Grote Hellekensstraat 54 b
B-3520 Zonhoven
Belgium
+3211823595
E-mail: dristeem-europe@dristeem.com

Continuous product improvement is a policy of DriSteem; therefore, product features and specifications are subject to change without notice.

CRUV, DriSteem, and Vapor-logic are registered trademarks of Research Products Corporation and are filed for trademark registration in Canada and the European community.

Product and corporate names used in this document may be trademarks or registered trademarks. They are used for explanation only without intent to infringe.

© 2016 Research Products Corporation

Form No. VL3-to-VL6-CRUV-0316
Part No. 890000-754 Rev. A