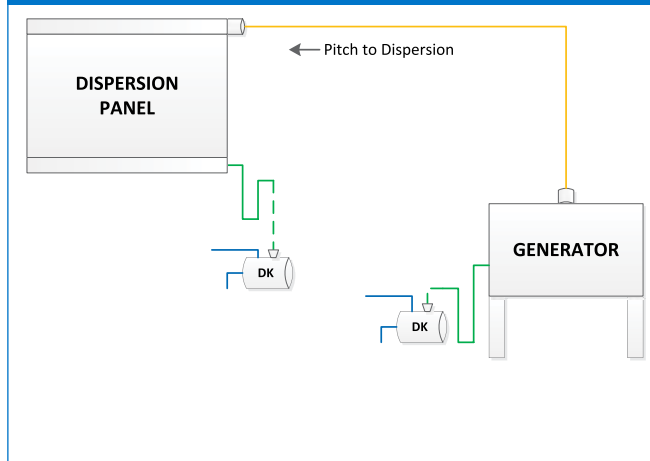
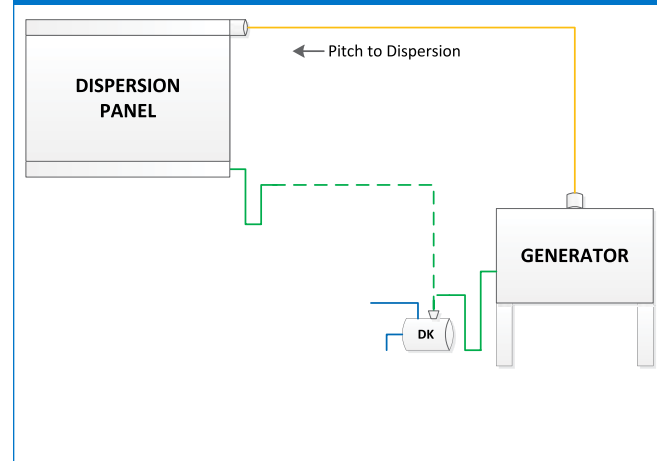


CONDENSATE MANAGEMENT: ATMOSPHERIC STEAM SYSTEMS

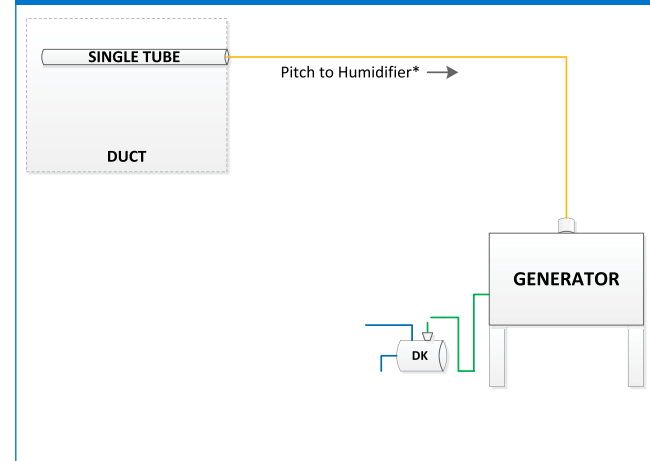
#1: Dispersion panel - separate drains



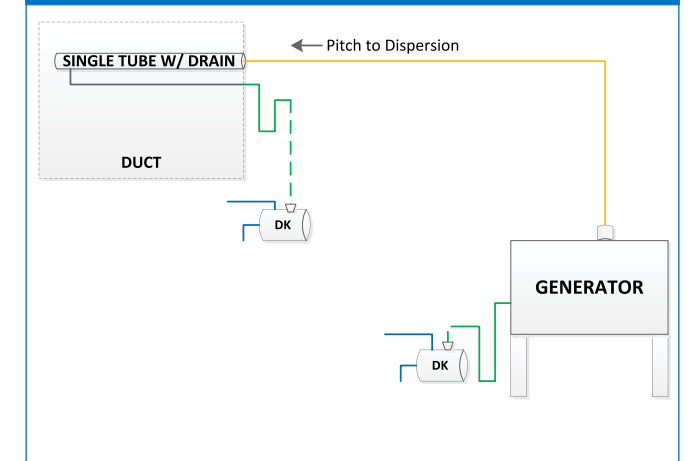
#2: Dispersion panel - common drain



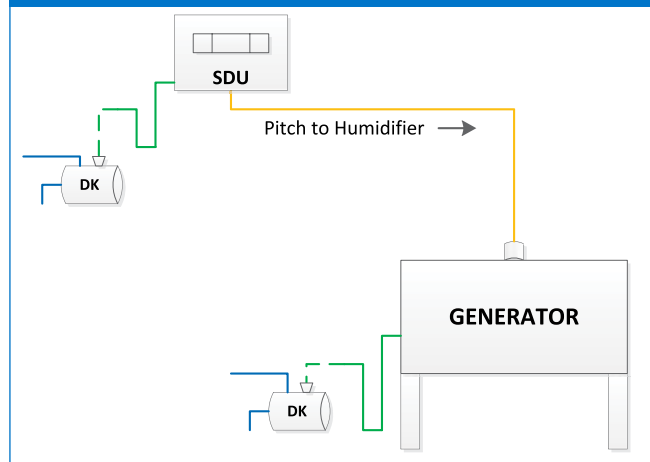
#3: Single dispersion tube



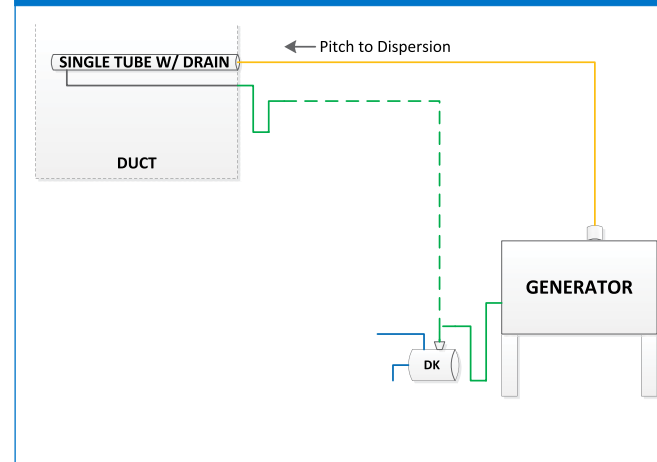
#4: Single dispersion tube with drain - separate drains



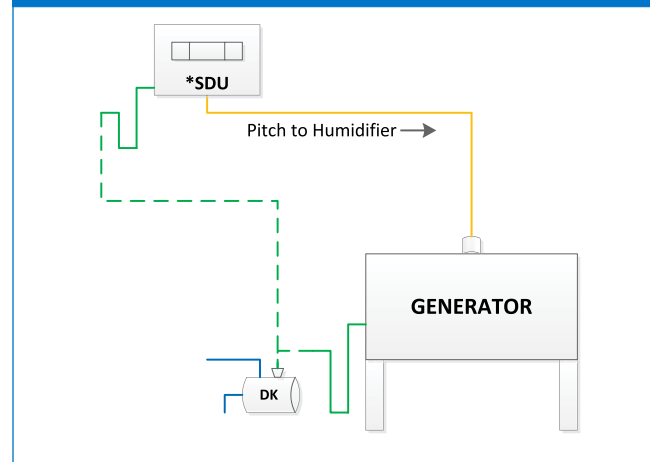
#5: Space distribution unit - separate drains



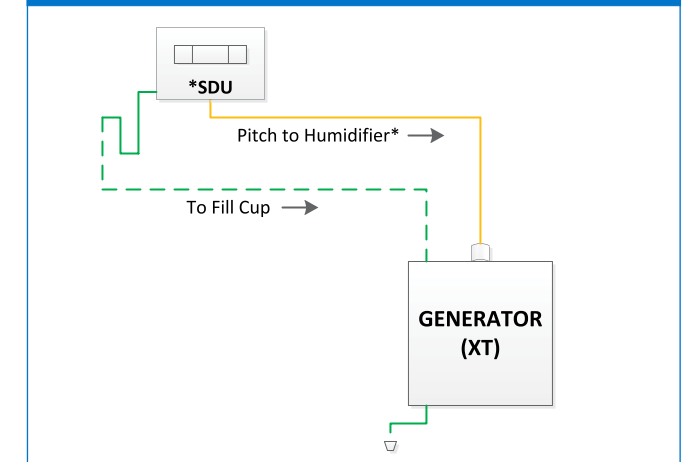
#6: Single dispersion tube with drain - common drain



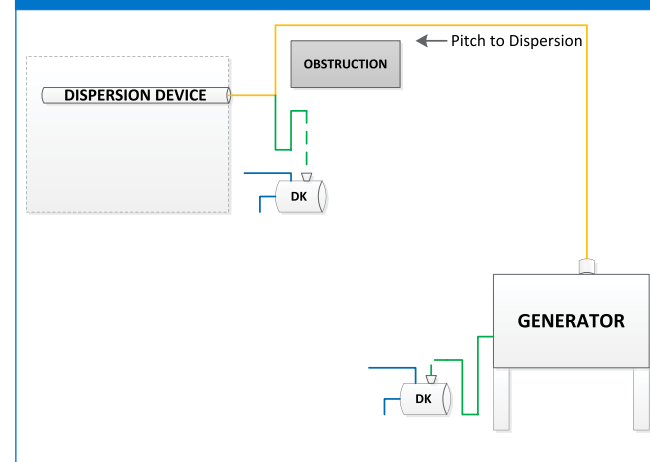
#7: Space distribution unit - common drain



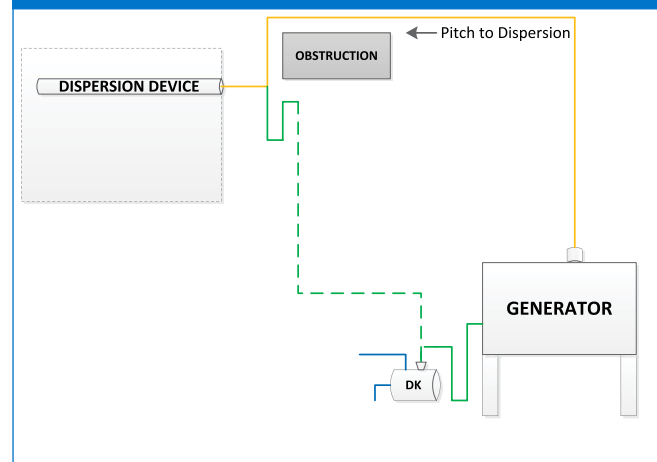
#8: Space distribution unit - XT units



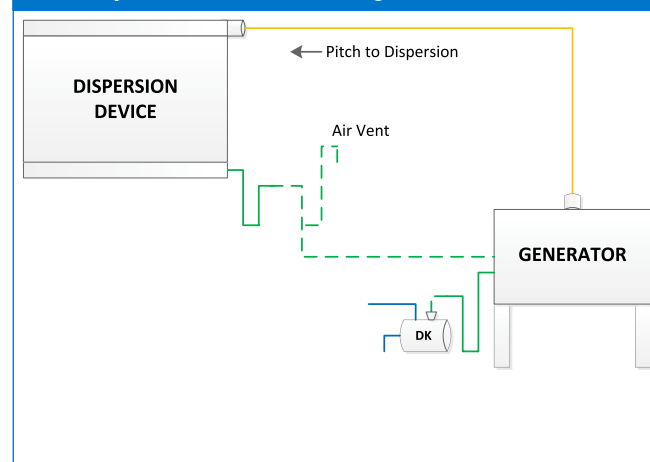
#9: Dispersion with obstruction - separate drain



#10: Dispersion with obstruction - common drain



#11: Dispersion device with integral return



LEGEND	
	Non Pressurized Steam
	Non Pressurized Condensate
	Cold Water

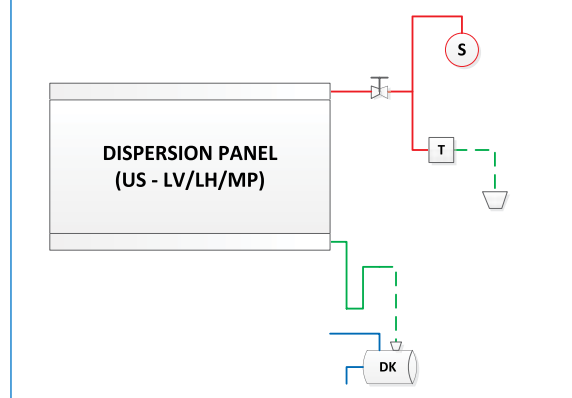
Notes:

1. The Drane-kooler™ water tempering device can be replaced with a standard drain.
2. Check with local code for maximum discharge drain temperature.
3. XT, RTS®, and GTS® humidifiers include a tempered drain and do not require an external water seal.
4. Vaporstream®, RTS®, and GTS® humidifiers have the ability to return condensate directly to the tank.

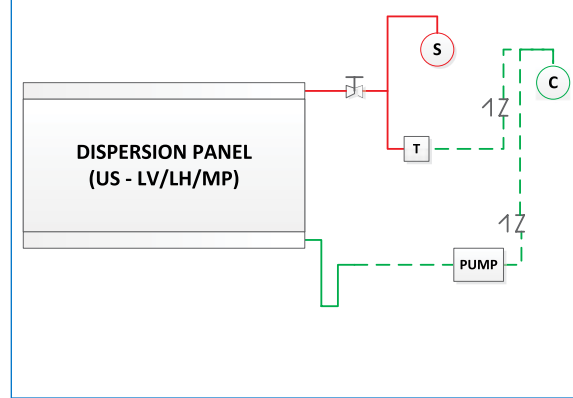
* Electrode humidifier (XT) with capacity > 20 lbs/hr must be pitched to dispersion.

CONDENSATE MANAGEMENT: PRESSURIZED STEAM SYSTEMS

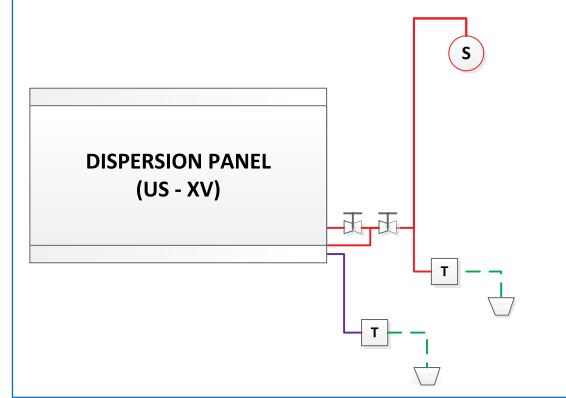
#1: Dispersion panel - separate drains



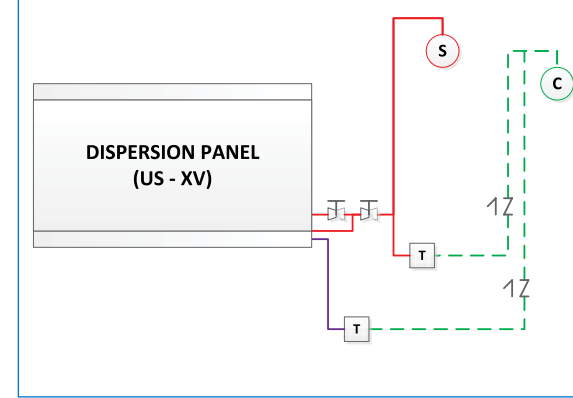
#2: Dispersion panel - to condensate main



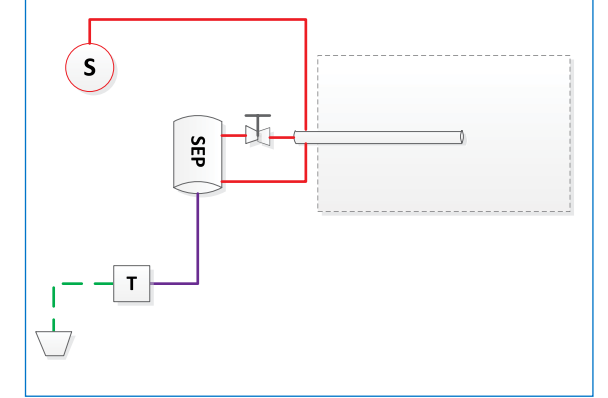
#3: Ultra-sorb XV - separate drains



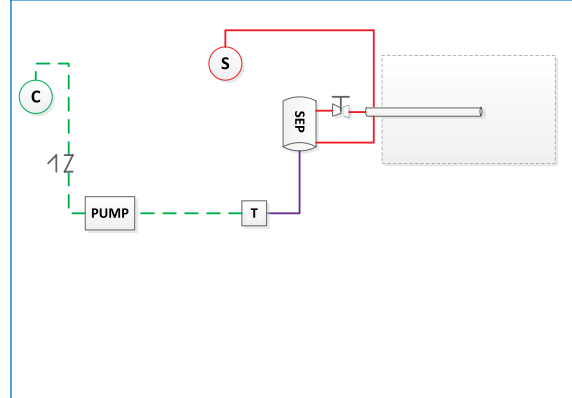
#4: Ultra-sorb XV - to condensate main



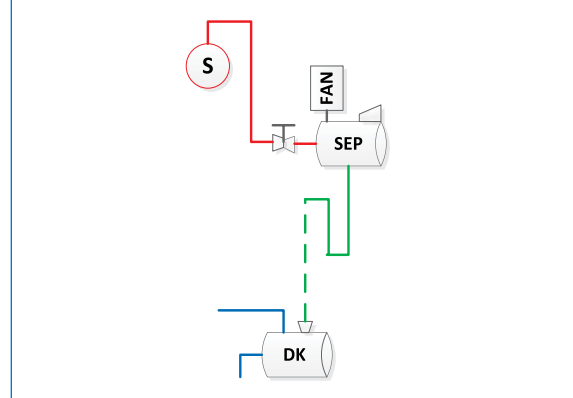
#5: Single tube - to drain



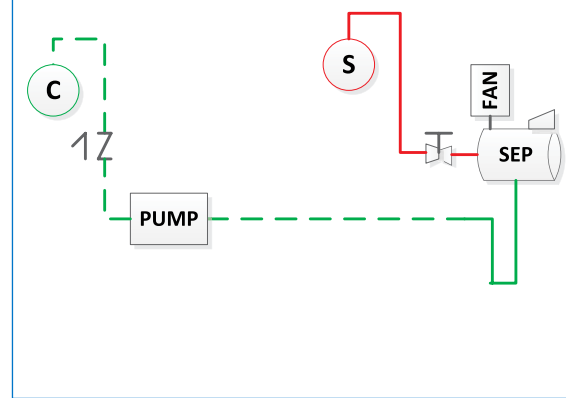
#6: Single tube - to condensate main



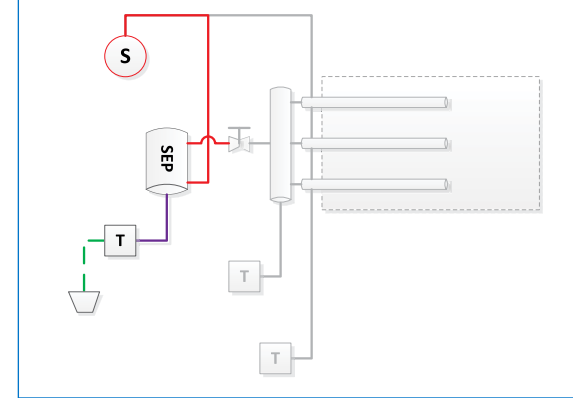
#7: Area type - to drain



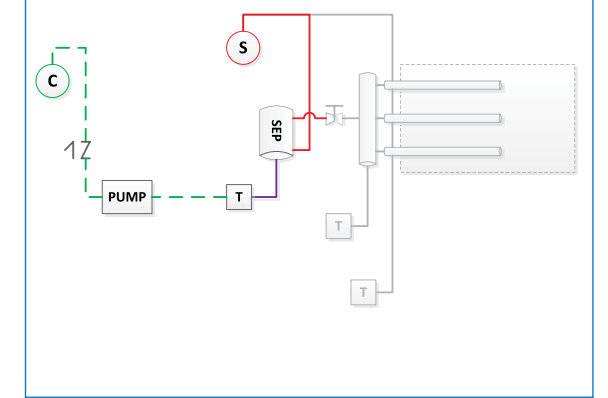
#8: Area type - to condensate main



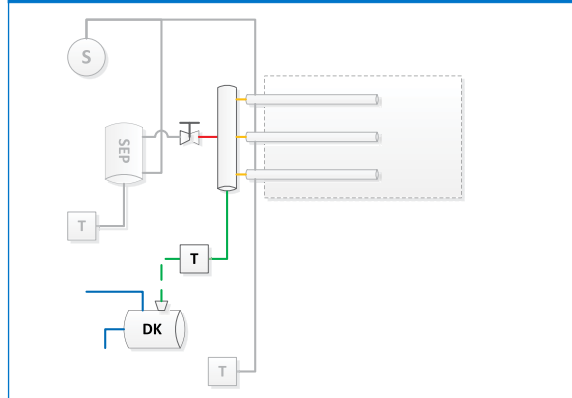
#9: Separator - to drain



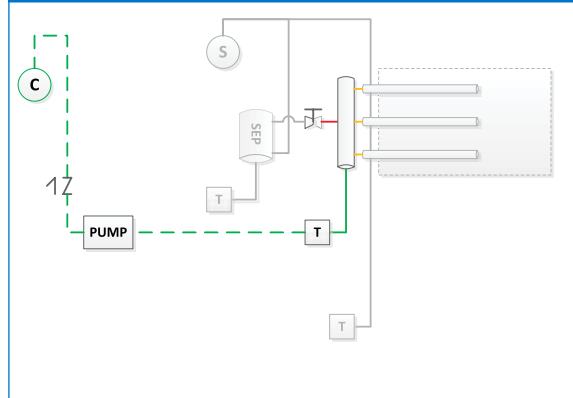
#10: Separator - to condensate main



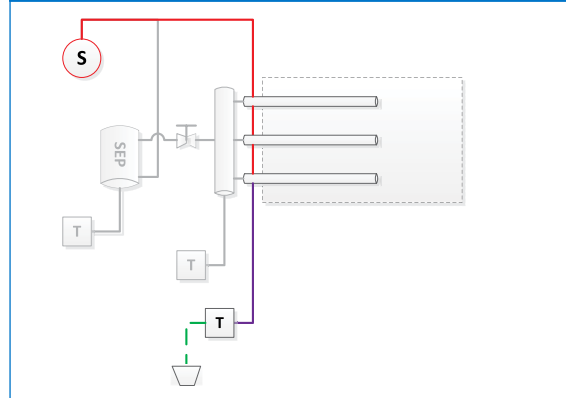
#11: Header - to drain



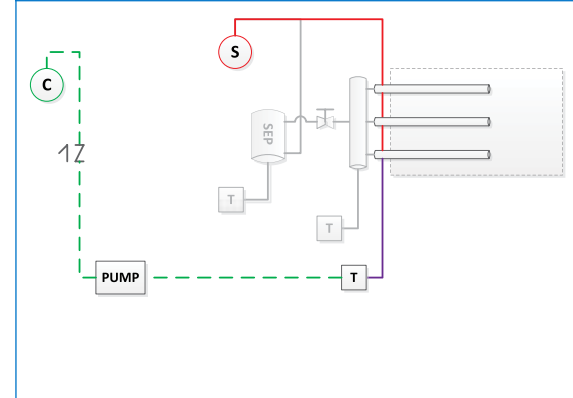
#12: Header - to condensate main



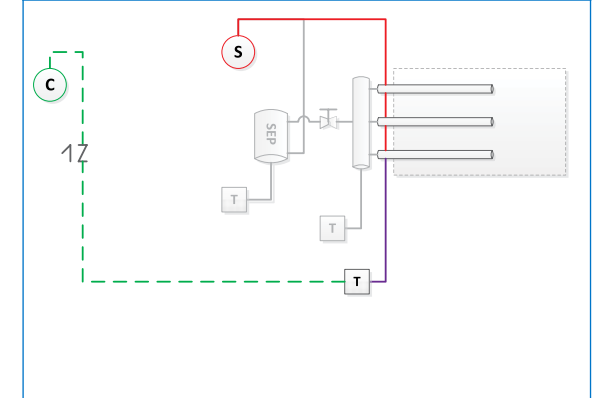
#13: Jacketing - to drain



#14: Jacketing - to condensate main (pump)



#15: Jacketing - to condensate main



LEGEND	
	Pressurized Steam
	Pressurized Condensate
	Non Pressurized Condensate
	Cold Water

Notes:

1. The Drane-kooler water tempering device can be replaced with a standard drain.
2. Check with local code for maximum discharge drain temperature.
3. DriSteem recommends lifting of no more than 6 inches per psi of steam pressure.

Table 2-1: Steam trap recommendations

Standard piping	
Cast iron F&T	Steam pressure ≤ 15 PSI and not lifting condensate
Cast iron inverted bucket	Steam pressure > 15 PSI or lifting condensate
Stainless piping	
Stainless thermostatic	Steam pressure ≤ 15 PSI and not lifting condensate Up to 60 lbs/hr condensate load
Stainless F&T	Steam pressure > 15 PSI or lifting condensate Up to 120 lbs/hr condensate load
Stainless inverted bucket	Steam pressure > 15 PSI or lifting condensate



14949 Technology Drive, Eden Prairie, MN 55344
800-328-4447 or 952-949-2415 • www.dristeem.com

DRI-STEEM Corporation • a subsidiary of Research Products Corporation
DriSteem U.S. operations are ISO 9001:2015 certified

DriSteem, Ultra-sorb, Rapid-sorb, and DriCalc are registered trademarks of DRISTEEM Corporation.
Maxi-bank is a trademark of DRISTEEM Corporation.
DriSteem, Ultra-sorb, Rapid-sorb, and Dri-calc are filed for trademark registration in Canada and the European community.