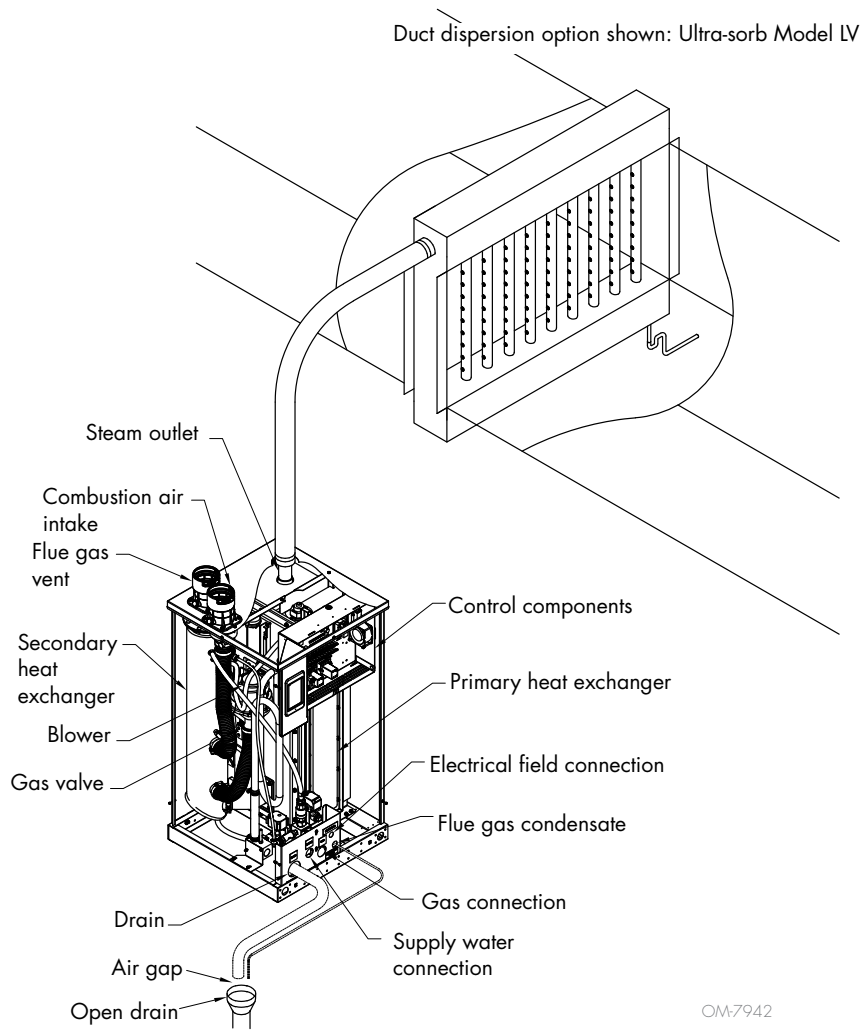


# GTS<sup>®</sup> humidifier LX Series

**FIGURE 1-1: GTS HUMIDIFIER**



# Models, capacities, electrical specifications, and weights

**Table 2-1:**  
GTS models, capacities, electrical specifications, turndown, and weights

GTS model	Maximum steam capacity		Input			GTS humidifier LX series*				Burner quantity	Turndown		Full load amps*	
						Operating weight		Shipping (empty) weight**						
	lbs/hr	kg/h	MBh	kW	m <sup>3</sup> /h	lbs	kg	lbs	kg		ratio	lbs/hr	120V 60 Hz	230V 50 Hz
LX-50	50	23	61	17.8	1.7	304	138	187	85	1	5:1	10	2.0	1.5
LX-75	75	34	91.5	26.8	2.5	304	138	187	85	1	6:1	12.5	2.0	1.5
LX-100	100	45	122	35.8	3.4	300	136	192	87	1	8:1	12.5	2.0	1.5
LX-150	150	68	183	53.6	5.1	450	204	242	110	1	6:1	25	2.5	2.0
LX-200	200	91	244	71.5	6.8	706	320	356	161	1	6.7:1	30	4.0	2.5
LX-250	250	113	305	89.4	8.5	706	320	356	161	1	8.3:1	30	4.0	2.5
LX-300	300	136	360	105.5	10	709	321	367	166	1	10:1	30	4.0	2.5
LX-400	400	181	488	143	13.5	1259	571	593	269	2	13.3:1	30	6.5	3.5
LX-500	500	227	610	178.8	16.9	1259	571	593	269	2	16.7:1	30	6.5	3.5
LX-600	600	272	720	211	20	1265	574	615	279	2	20:1	30	6.5	3.5

\* For outdoor enclosures, see Table 10-1.

\*\* Add approximately 60-90 lbs (27-41 kg) for packaging material.

## LP GAS

All models operate at rated input

## HIGH ELEVATION

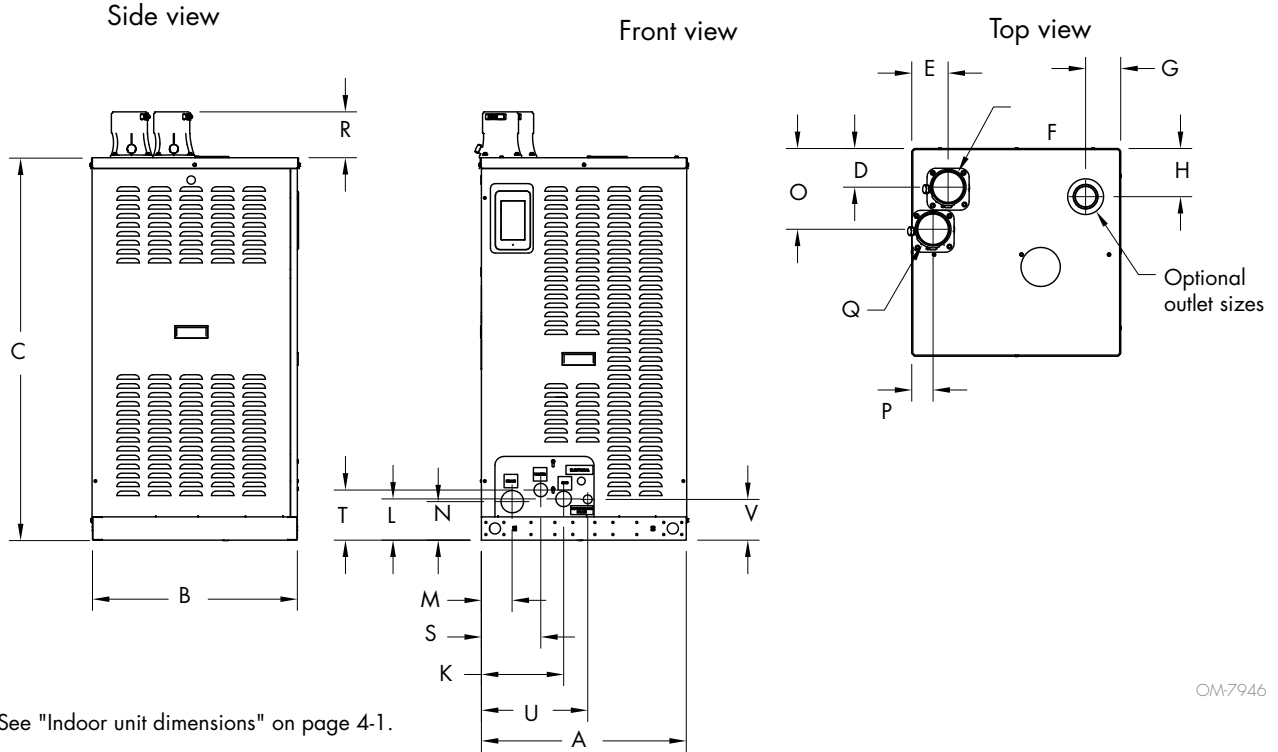
The input shown in Table 2-2 is derate when operating units at a high elevation.

**Table 2-2:**  
High elevation derate

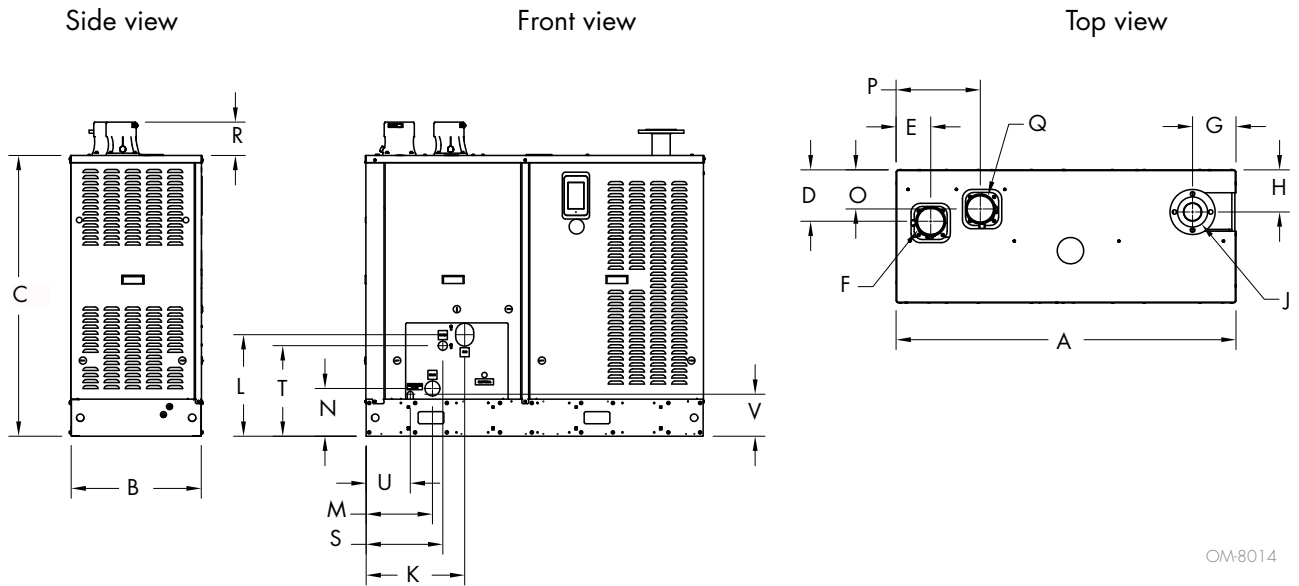
Elevation		Input derate %
feet	meters	
0-2000	0-610	0
2001-2500	610-765	2
2501-3000	765-915	4
3001-3500	915-1065	6
3501-4000	1065-1220	8
4001-4500	1220-1370	10
4501-5000	1370-1525	12
5001-5500	1525-1675	14
5501-6000	1675-1830	16
6001-6500	1830-1980	18
6501-7000	1980-2135	20
7001-7500	2135-2285	22
7501-8000	2285-2440	24

# Dimensions

**FIGURE 3-1: LX MODELS 50 - 150 INDOOR UNIT DIMENSIONS**

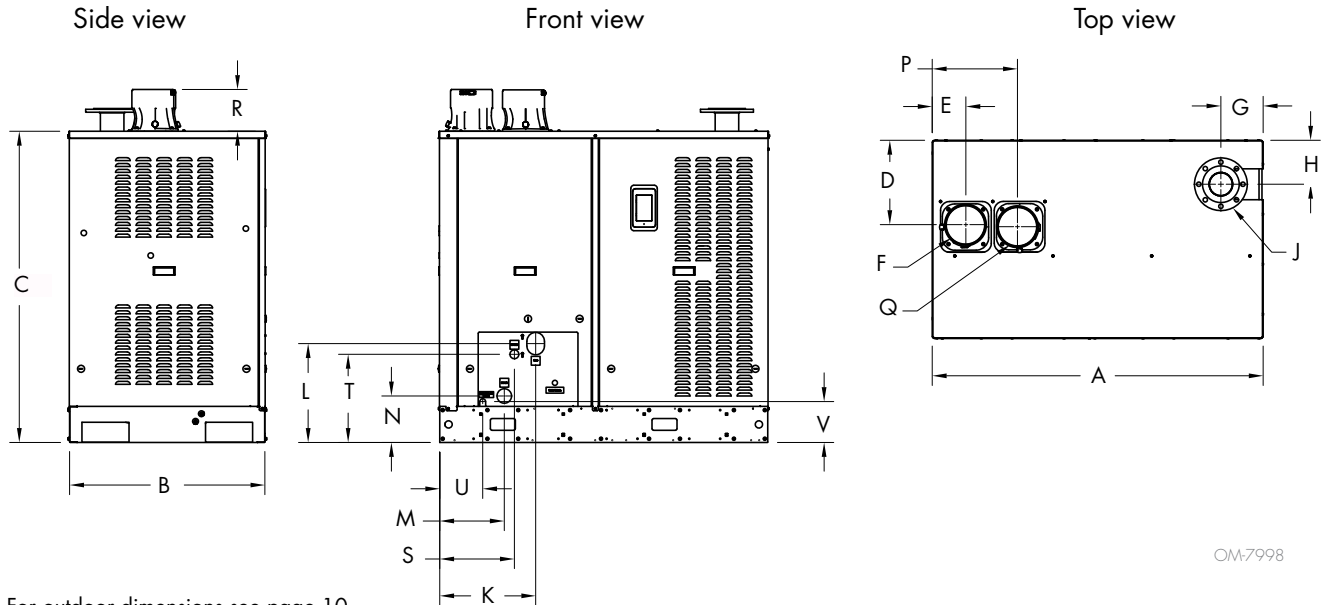


**FIGURE 3-2: LX MODELS 200 - 300 INDOOR UNIT DIMENSIONS**



# Dimensions

**FIGURE 4-1: LX MODELS 400 - 600 INDOOR UNIT DIMENSIONS**



OM-7998

For outdoor dimensions see page 10.

**Table 4-1:  
Indoor unit dimensions**

	Description	LX-50, LX-75, LX-100		LX-150		LX-200, LX-250, LX-300		LX-400, LX-500, LX-600	
		inches	mm	inches	mm	inches	mm	inches	mm
A	Overall length	23.25	590	32.25	819	56	1422	56	1422
B	Overall width	23.25	590	23.25	590	22	559	34	864
C	Overall height	42.75	1085	42.75	1085	47	1194	53	1346
D	Flue position	4.3	109	4.3	109	8.7	221	14.5	368
E		4.4	112	4.4	112	5.61	143	5.6	142
F	Flue diameter	3	76	3	76	4	102	6	152
G	Steam outlet position	3.8	97	3.8	97	7.1	180	7	178
H		5.3	135	5.3	135	6.9	175	7.4	188
J	Steam outlet diameter	2	51	2	51	3	76	4	102
K	Gas inlet position	9.2	234	9.2	234	16.6	4022	16.6	422
L		4.6	119	4.6	119	14.3	363	14.3	363
M	Drain position	3.5	89	3.5	89	11	279	11	279
N		4.5	114	4.5	114	8	203	8	203
O	Combustion air	8.92	227	8.92	227	6.5	165	14.5	368
P		2.7	69	2.7	69	14	363	14.5	368
Q	Combustion air diameter	3	76	3	76	4	102	6	152
R	Flue and combustion air height	5.5	140	5.5	140	5.6	142	7.1	180
S	Fill valve connection position	6.59	167	6.59	167	22.4	569	22.4	569
T		5.60	142	5.60	142	12.4	315	12.4	315
U	Condensate Drain	11.8	300	11.8	300	7.3	185	7.3	185
V		4.55	116	4.55	116	6.95	177	6.95	177

# Location and clearance recommendations

## FINDING A LOCATION

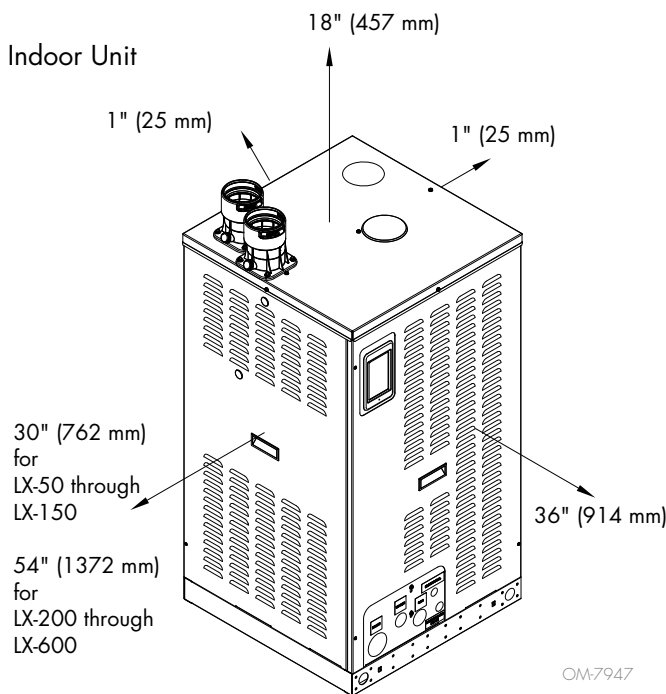
- Provide a level, solid foundation for the humidifier.
- The GTS humidifier LX series vent and air piping can be installed through the roof or through a sidewall. Use only vent/air piping methods described in the IOM. Locate the humidifier as near as possible to an outside wall or accessible roof space so that the flue pipe from the humidifier is short, direct, and limited to wind exposure.
- Locate the unit so it and its electrical components are protected from water during humidifier operation and service.
- Install the humidifier in a location away (and protected) from drafts. Follow the instructions concerning combustion and ventilation air.
- Locate the humidifier in an area where leakage from the tank or its connections will not result in damage to the adjacent structure or to lower floors of the structure. When such locations cannot be avoided, install a suitable drain pan (adequately drained) under the humidifier. The pan must not restrict combustion airflow.
- If located in an insulated space, keep the humidifier free and clear of insulating materials. Insulating material can be combustible. Inspect the humidifier area when the humidifier is installed or when insulation is added.
- See the combustion air and flue gas venting section in the Installation and Operation Manual for pipe termination locations and instructions.

## WARNING

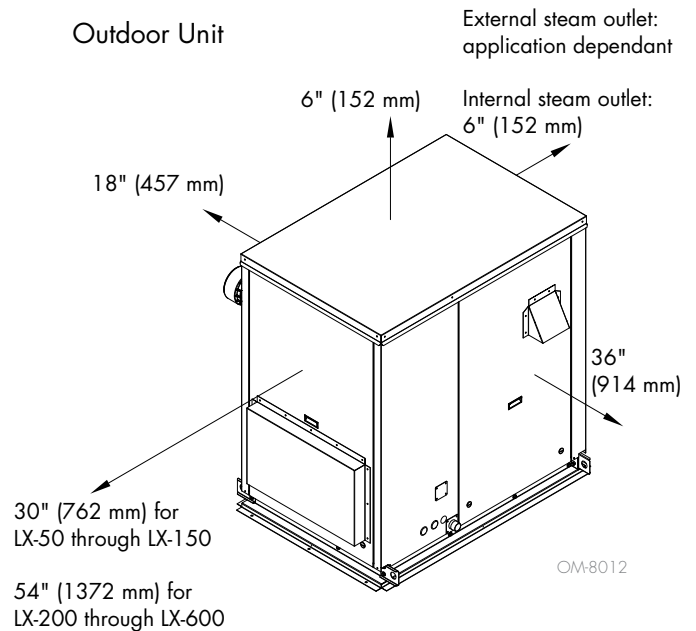
### Installation requirements

The humidifier must be installed by a qualified technician and meet the requirements of all governing codes. Failure to follow these instructions could cause severe bodily injury or death.

**FIGURE 5-1: LX SERIES CLEARANCE RECOMMENDATIONS (INDOOR UNITS)**

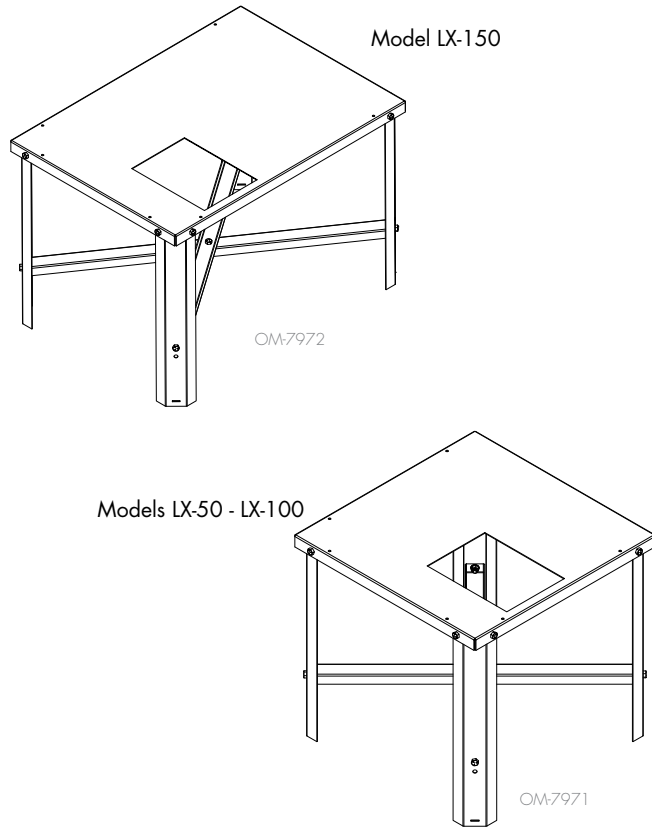


**FIGURE 5-2: LX SERIES CLEARANCE RECOMMENDATIONS (OUTDOOR UNITS)**



# Optional floor stand mount (Models 50, 75, 100, and 150 only)

**FIGURE 6-1: LX SERIES FLOOR STAND MOUNT ASSEMBLY**



## FLOOR STAND MOUNTING INSTRUCTIONS

1. Refer to Figure 7-1 for assembly of the floor stand.
2. Use the hardware provided by DriSteem to assemble.
3. Arrange appropriate lifting mechanism and personnel to mount the GTS humidifier LX series on the floor stand. See Warning below.
4. Use the lifting hole on the base of humidifier to carefully lift it off the ground. See Warning below.
5. Slowly lower the humidifier on the floor stand.
6. Secure the base of the humidifier to the floor stand using sheet metal screws.

### **WARNING**

#### **HEAVY OBJECT**

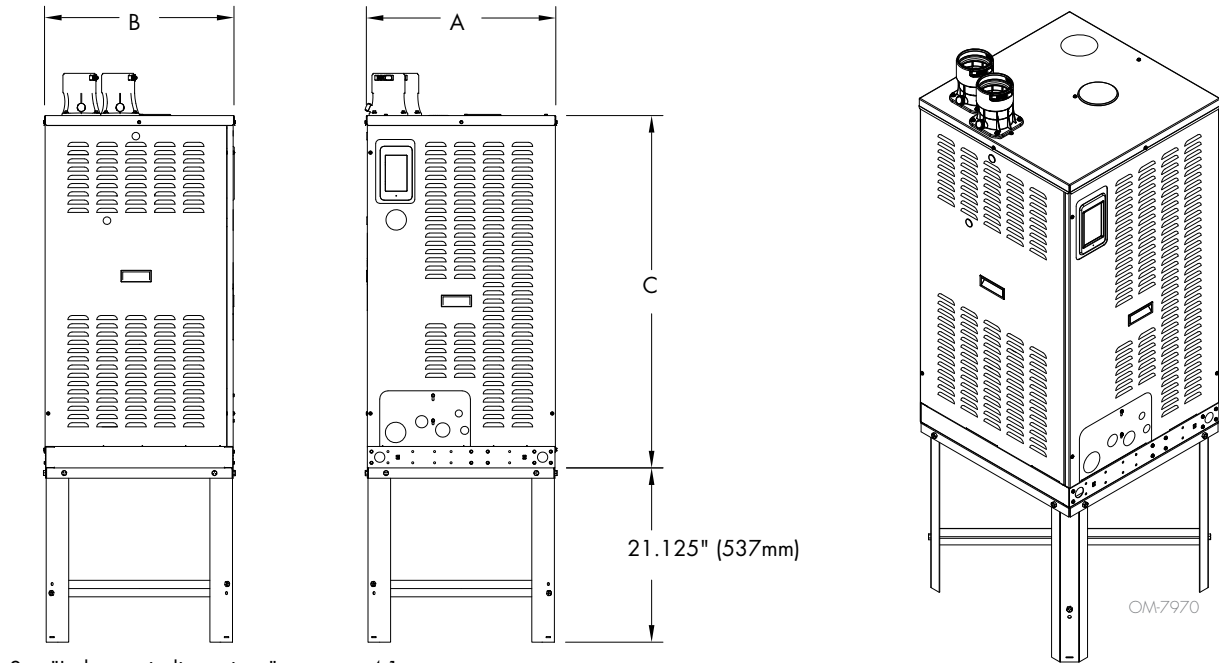
To avoid muscle strain or back injury, use lifting aids and proper lifting techniques when removing or replacing.

#### Notes:

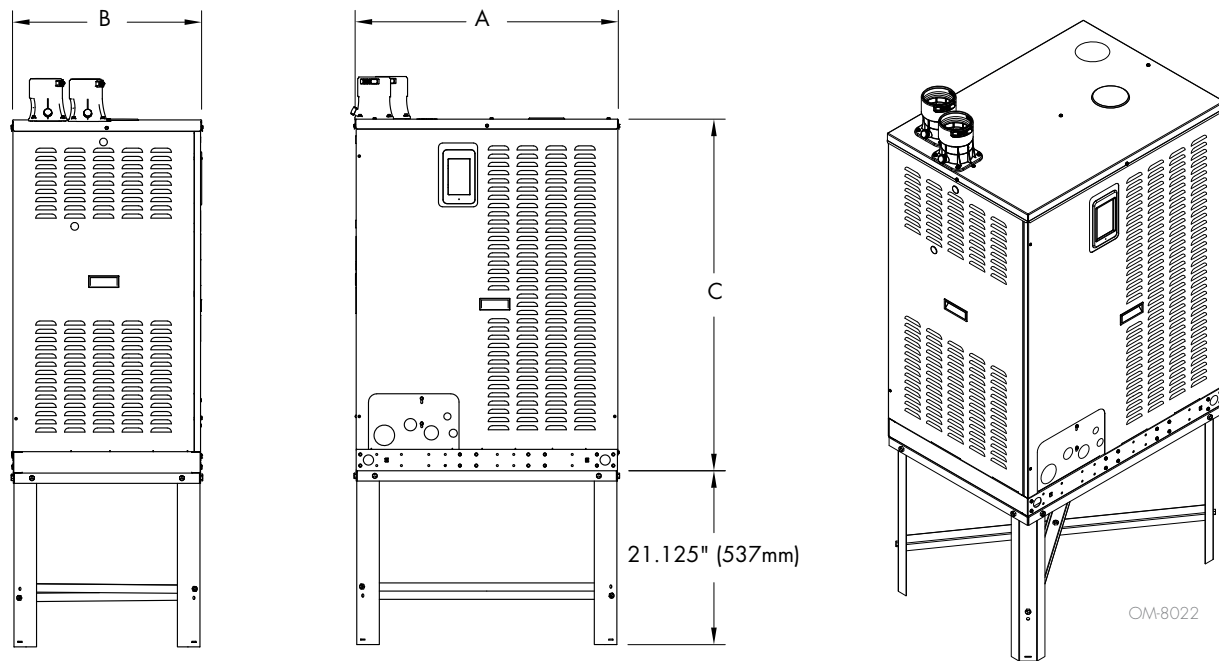
- Weight of floor stand:  
Models LX-50 - LX-100: 24 lbs (11 kg),  
Model LX-150: 30 lbs (14 kg)
- Allows for condensate piping/pump
- Bottom supply water connection is located underneath the side water connection. See fill valve connection position on page 4.

# Optional floor stand mount (Models 50, 75, 100, and 150 only)

**FIGURE 7-1: LX SERIES WITH FLOOR STAND MOUNT (MODELS 50, 75, AND 100)**

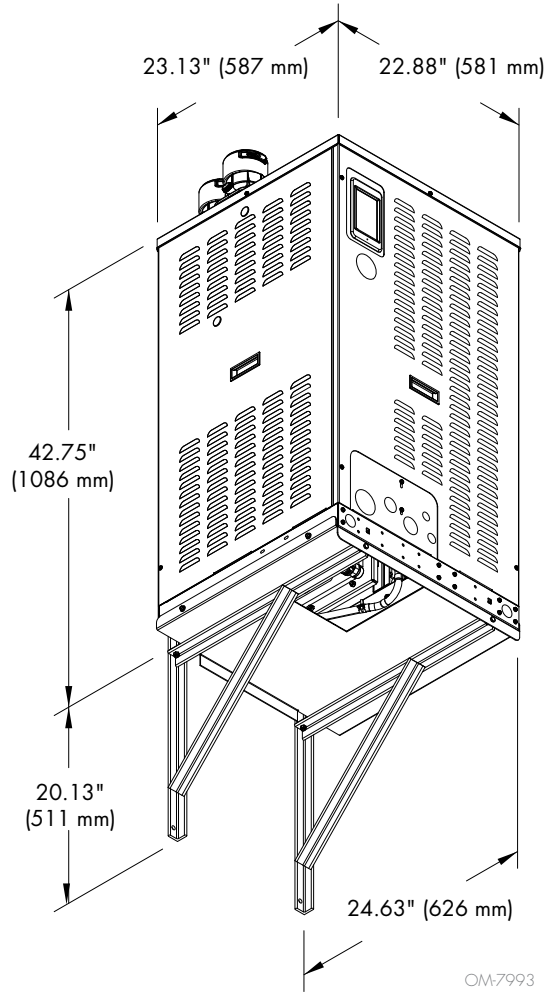


**FIGURE 7-2: LX SERIES WITH FLOOR STAND MOUNT (MODEL 150)**

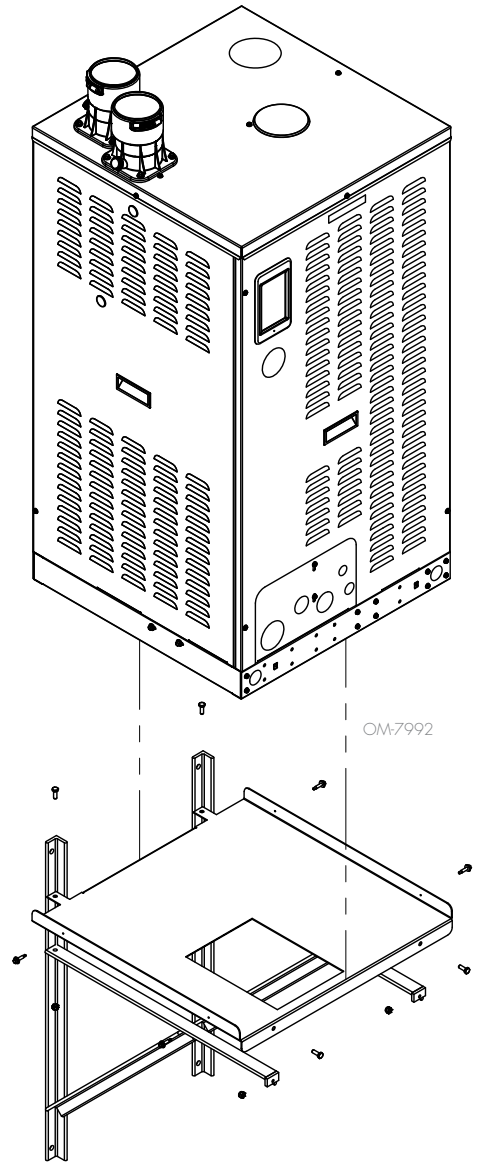


# Optional wall mount (Models 50, 75 and 100 only)

**FIGURE 8-1: LX SERIES WITH WALL MOUNT**



See "Indoor unit dimensions" on page 4-1.





## Outdoor enclosure: Location

- The following information is not intended to supersede any requirements of federal, state, or governing codes having jurisdiction; prior to locating the unit, authorities having jurisdiction should be consulted.
- The GTS must be level and located so there is enough clearance for opening the access panels (see recommended clearances on Page 5).
- Do not locate unit in areas where the surrounding air has high levels of particulates, such as some industrial parks or areas near highways. In situations such as these, you will need to filter the air inlets.
- The unit should be located so prevailing winds do not blow into the air intakes.
- When located on the roof, the air intakes must be a minimum of 14" (360mm) off the roof to prevent intake of snow or splashed rain.
- Locate unit so air intakes are not too close to other exhaust fan outlets, gasoline storage, or other contaminants that could potentially cause dangerous situations. Using and storing gasoline or other flammable vapors and liquids in open containers near this appliance is hazardous.

**Table 9-1:**  
Outdoor unit amps and weights

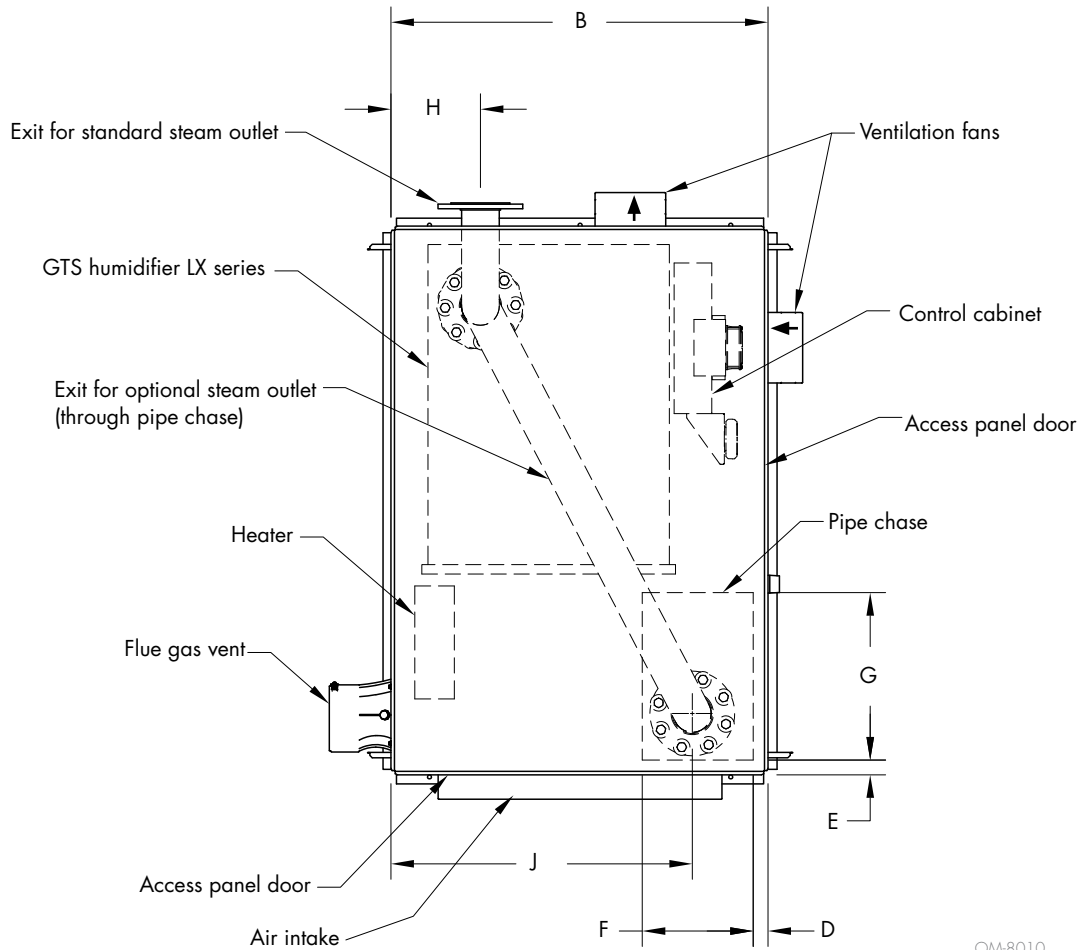
Model	Full Load Amps** (Heater Package)		Full Load Amps** (No Heater Package)		Operating weight		Shipping (empty) weight*	
	120V 60 Hz	230V 50Hz	120V 60Hz	230V 50Hz	lbs	kg	lbs	kg
LX-50	7.0	4.5	3.0	2.5	479	217	362	164
LX-75	7.0	4.5	3.0	2.5	479	217	362	164
LX-100	7.0	4.5	3.0	2.5	475	216	367	166
LX-150	7.5	5.0	3.5	3.0	629	285	421	191
LX-200	9.0	5.5	5.0	3.5	914	415	564	256
LX-250	9.0	5.5	5.0	3.5	914	415	564	256
LX-300	9.0	5.5	5.0	3.5	916	415	574	260
LX-400	16.5	8.5	7.5	4.5	1606	729	940	426
LX-500	16.5	8.5	7.5	4.5	1606	729	940	426
LX-600	16.5	8.5	7.5	4.5	1612	731	962	436

\* Add approximately 60-90 lbs (27-41 kg) for packaging material.

\*\* Full load amps listed are for the humidifier and the enclosure.

# Outdoor enclosure: Dimensions

**FIGURE 10-1: OUTDOOR ENCLOSURE TOP VIEW**



OM-8010

**DIMENSIONS**

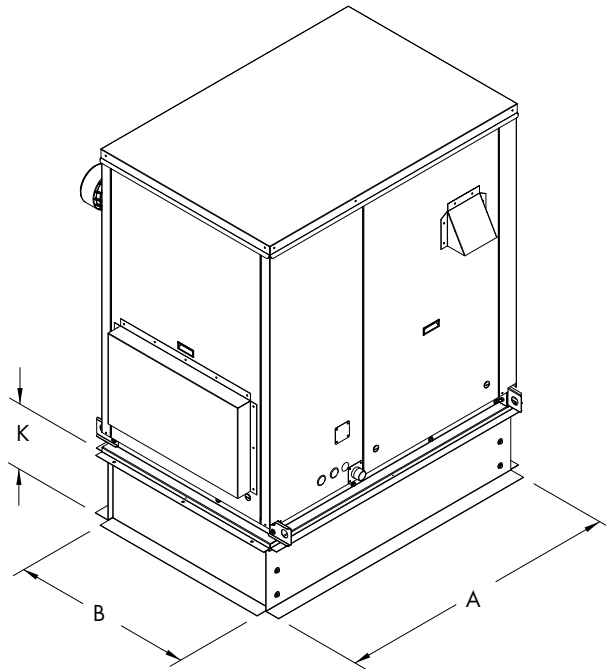
- For outdoor unit weights, see Table 9-1.
- For clearances, see Figure 5-1.

**Table 10-1: Outdoor unit dimensions**

	Description	LX-50, LX-75, LX-100		LX-150		LX-200, LX-250, LX-300		LX-400, LX-500, LX-600	
		inches	mm	inches	mm	inches	mm	inches	mm
A	Enclosure length	36	914.4	45	1143	57.35	1456.59	57.35	1456.59
B	Enclosure width	27.35	694.7	27.35	694.7	27.35	694.69	39.10	993.04
C	Enclosure height	57	1447.8	57	1447.8	62	1574.8	62	1574.8
D	Pipe chase position	2.05	52.02	2.05	52.02	2.05	52.0	2.05	52.02
E		6.51	165.28	6.51	165.3	3.05	77.4	2.05	52.04
F	Pipe chase size	7	177.8	7	177.8	7	177.8	10	254
G		11	279.4	11	279.4	14	355.6	16	406.4
H	Steam pipe position	6.46	164.1	6.46	164.1	9.17	233	8.965	227.61
J		22.77	578.3	20.83	529.1	22.16	562.84	31.48	799.36
K	Curb height	14.0 - 36.0	356 - 914	14.0 - 36.0	356 - 914	14.0 - 36.0	356 - 914	14.0 - 36.0	356 - 914
L	Height to bottom of flue outlet	48.35	1228.1	48.35	1228.1	49.49	1257	46.65	1184.9

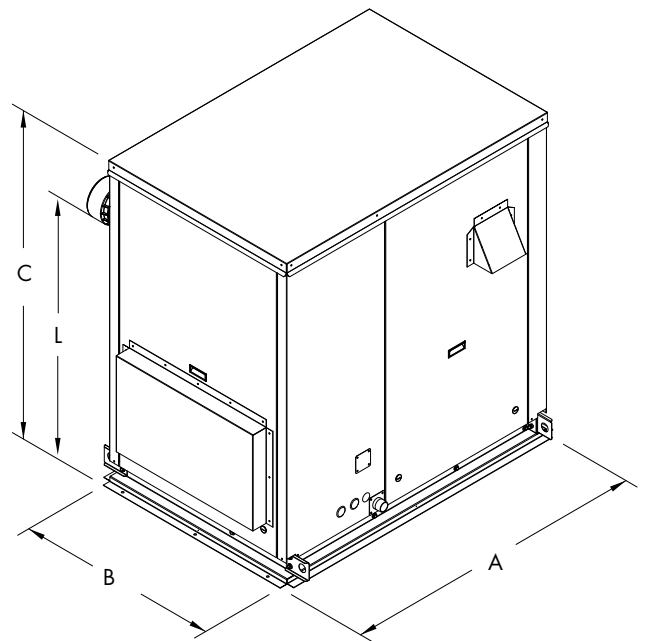
# Outdoor enclosure: Dimensions

**FIGURE 11-1: OUTDOOR ENCLOSURE MOUNTED ON A CURB**



OM-8008

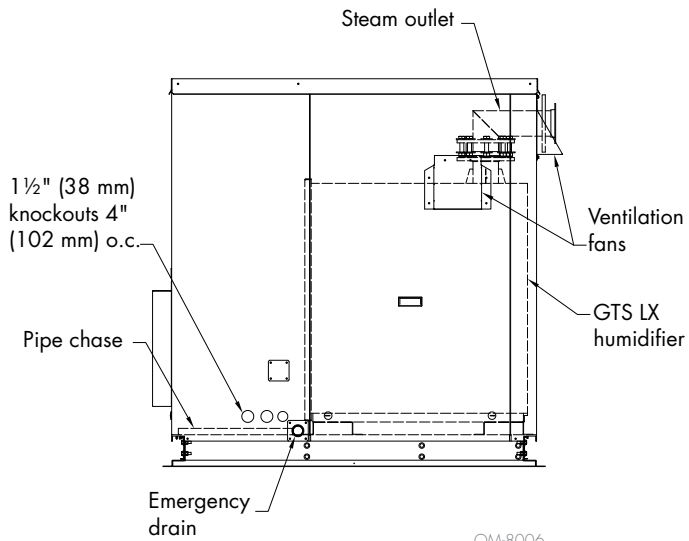
**FIGURE 11-2: OUTDOOR ENCLOSURE MOUNTED FLUSH**



OM-8009

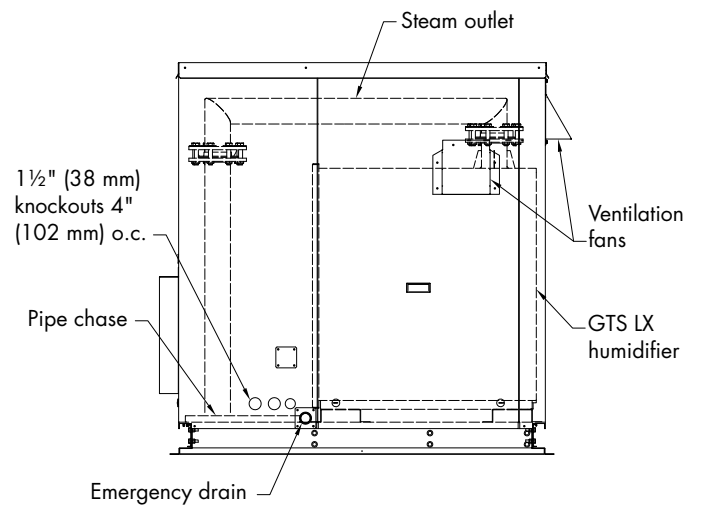
**FIGURE 11-3: GTS OUTDOOR ENCLOSURE STEAM OUTLET OPTIONS**

External steam outlet



OM-8006

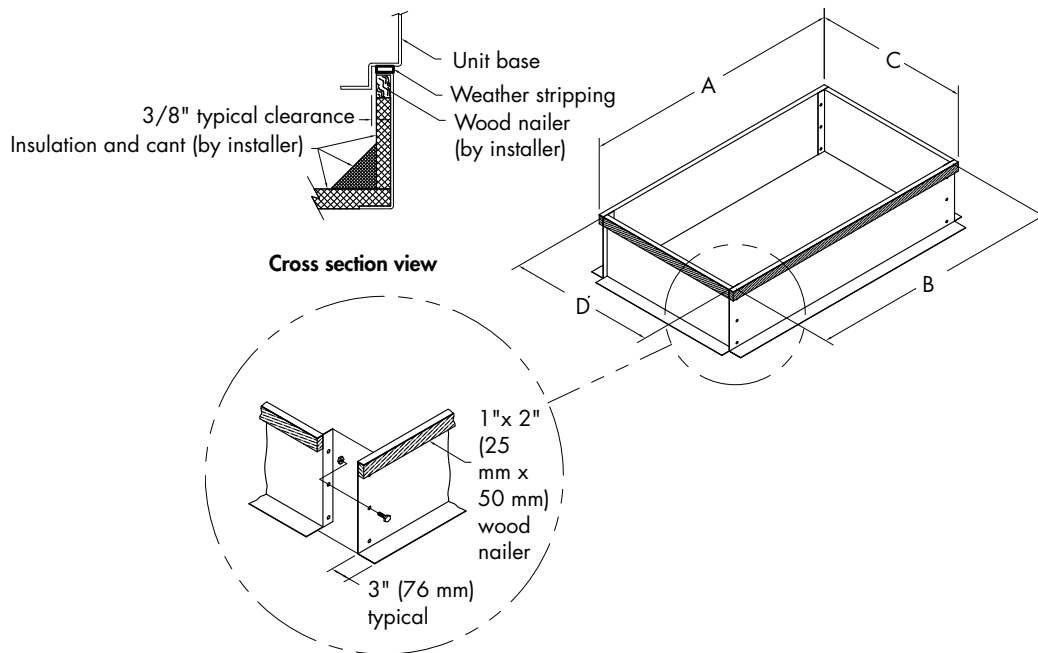
Internal steam outlet



OM-8007

# Outdoor enclosure curb details and dimensions

**FIGURE 12-1: LX SERIES OUTDOOR ENCLOSURE CURB DETAILS AND DIMENSIONS**



DM-7496

**Table 12-1:  
Outdoor enclosure curb dimensions**

Outdoor enclosure model	A		B		C		D	
	inches	mm	inches	mm	inches	mm	inches	mm
LX 50 - 100	35.38	898.65	33.23	844.04	26.73	678.94	24.73	628.14
LX 150	44.38	1127.25	42.23	1072.64	26.73	678.94	24.73	628.14
LX 200 - 300	56.73	1440.94	54.58	1386.33	26.73	678.94	24.73	628.14
LX 400 - 600	56.73	1440.94	54.58	1386.33	38.48	977.39	36.48	926.59