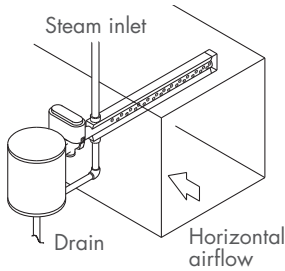
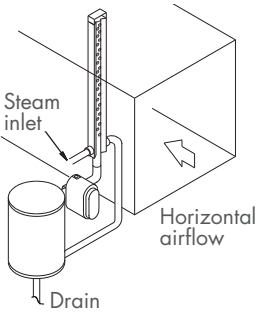


Single-tube steam injection humidifier

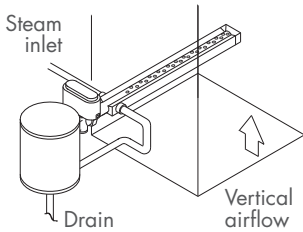
Figure 1-1:
Single-tube humidifier installation configurations



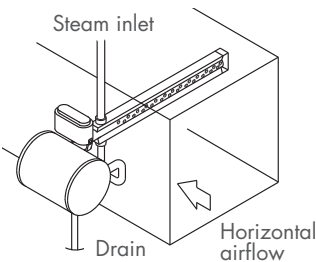
Horizontal tube/horizontal airflow
Typical configuration



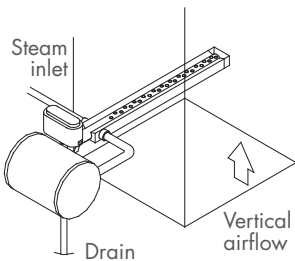
Vertical tube/horizontal airflow
For no access to side of duct, or
when duct is tall and narrow



Horizontal tube/vertical airflow
To eliminate cold start dripping,
tubelets should always point up
regardless of whether airflow
direction is up or down.



Horizontal separator/horizontal
airflow
For tight headroom



Horizontal separator/vertical
airflow
For tight headroom
To eliminate cold start dripping,
tubelets should always point up
regardless of whether airflow
direction is up or down.

OM-380, 381, 382, 383, 7652

Each Single-tube humidifier is furnished with:

1. Centrifugal type steam separator and steam jacketed dispersion tube with calibrated orifices for proper steam distribution:
 - ___ 304 stainless steel
 - ___ 316 stainless steel
2. Piping:
 - ___ Black iron
 - ___ 304 stainless steel
 - ___ 316 stainless steel
3. Inlet Y strainer with stainless steel screen:
 - ___ Cast iron body
 - ___ 304 stainless steel body
4. Normally closed steam valve with stainless steel plug and seat:

Valve body:

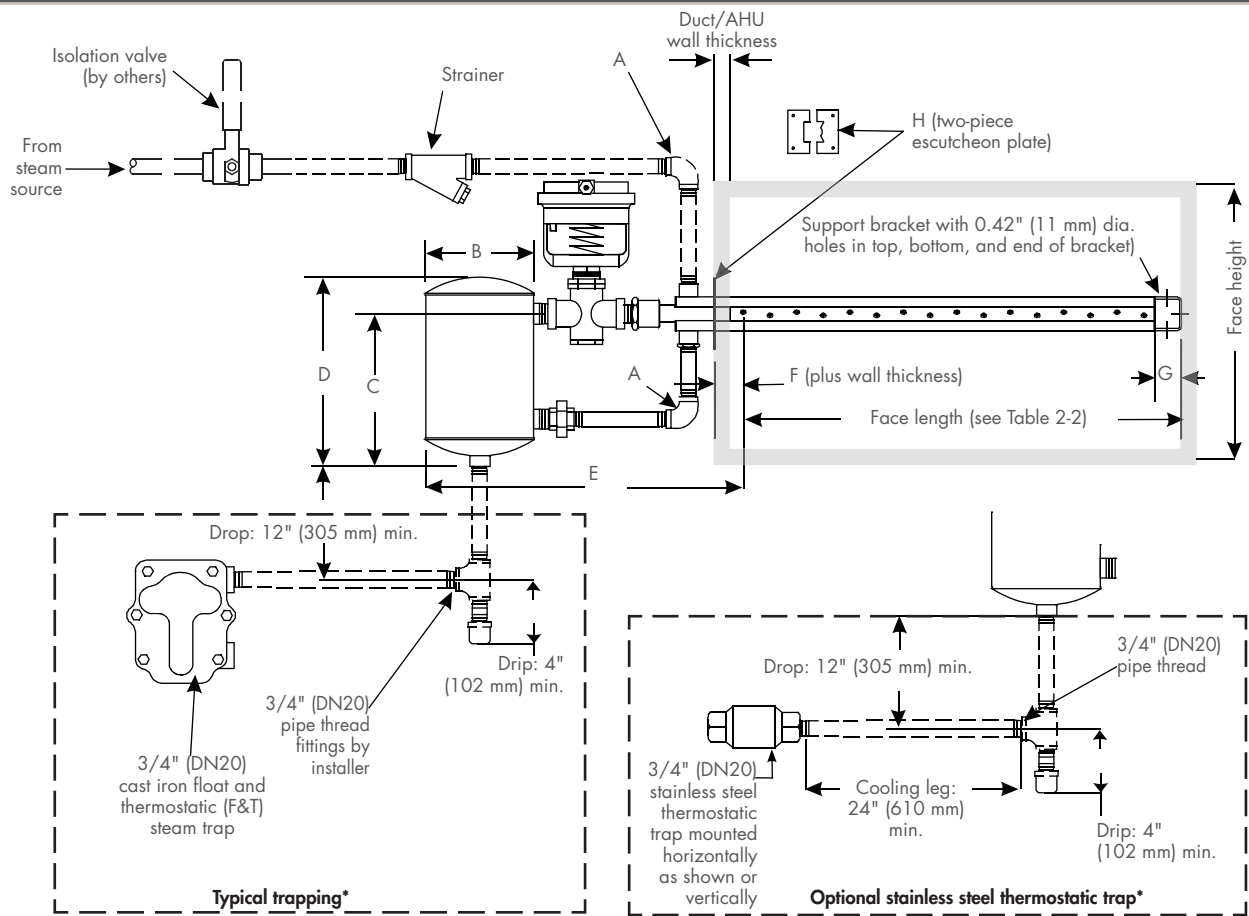
 - ___ Bronze
 - ___ Stainless steel

Actuator:

 - ___ Pneumatic valve
 - ___ Electric modulating valve
 - ___ Other: _____
5. Two-piece escutcheon plate to seal opening where tube penetrates duct:
 - ___ Galvanized
 - ___ 304 stainless steel
6. 3/4" pipe thread (DN20) steam traps:
 - ___ Cast iron float and thermostatic (F&T), for up to 15 psi (103.4 kPa)
 - ___ Cast iron inverted bucket, for greater than 15 psi (103.4 kPa)
 - ___ Stainless steel thermostatic

Single-tube steam injection humidifier

Figure 2-1:
Single-tube humidifier dimensions



Notes:

- * See *Steam Injection Humidifiers Product Catalog* for more information about traps and trap piping.
- Dashed lines indicate provided by installer; right-hand discharge shown.
- Typical installation shown; see additional installation configurations in Figure 1-1.

OM-565X
mc_041411_1225

Table 2-1: Single-tube humidifier dimensions

Model	Valve size		A		B		C		D		E		F*		G		H	
	in.	in.	in.	DN	in.	mm	in.	mm	in.	mm	in.	mm	in.	mm	in.	mm	in.	mm
5-60	1/2	1/2	15	5.0	127	8.00	203	9.75	248	13.5	343	2	51	1.5	40	4x4	100x100	
6-60	1/2	1/2	15	6.0	152	8.25	210	10.50	267	15.0	381	2	51	1.5	40	4x4	100x100	
6-70	1/2	3/4	20	6.0	152	8.25	210	10.50	267	16.5	419	2	51	1.5	40	4x4	100x100	
7-60	3/4	1/2	15	7.0	178	8.50	222	11.00	279	16.5	419	2	51	1.5	40	4x4	100x100	
7-60	1	1/2	15	7.0	178	8.50	222	11.00	279	17.5	445	2	51	1.5	40	4x4	100x100	
7-70	3/4	3/4	20	7.0	178	8.50	222	11.00	279	18.0	457	2	51	1.5	40	4x4	100x100	
7-70	1	3/4	20	7.0	178	8.50	222	11.00	279	19.0	483	2	51	1.5	40	4x4	100x100	
8-80	3/4	1 1/2	40	8.0	203	10.50	273	13.75	349	19.5	495	2	51	1.5	40	6x6	152x152	
8-80	1	1 1/2	40	8.0	203	10.50	273	13.75	349	20.5	521	2	51	1.5	40	6x6	152x152	
8-80	1 1/4	1 1/2	40	8.0	203	10.50	273	13.75	349	20.0	508	2	51	1.5	40	6x6	152x152	
8-80	1 1/2	1 1/2	40	8.0	203	10.50	273	13.75	349	21.0	533	2	51	1.5	40	6x6	152x152	

* Variable from 0" to 2" (0 mm to 51 mm) in addition to duct/AHU wall thickness

mc_041411_1226

Table 2-2: Single-tube humidifier standard dispersion tube face lengths

Table model	Face lengths
60	6" to 144" in 1/2" increments (150 mm to 3658 mm in 13-mm increments)
70	18" to 192" in 1/2" increments (457 mm to 4877 mm in 13-mm increments)
80	24" to 192" in 1/2" increments (610 mm to 4877 mm in 13-mm increments)

Note:
• End support brackets are provided only on tube lengths of 12" (305 mm) or longer.