

SCHNEIDER MS51-7XXX SERIES VALVE W/TCI-W11-U-(H) HUMIDISTAT

230 VOLT TRANSFORMER

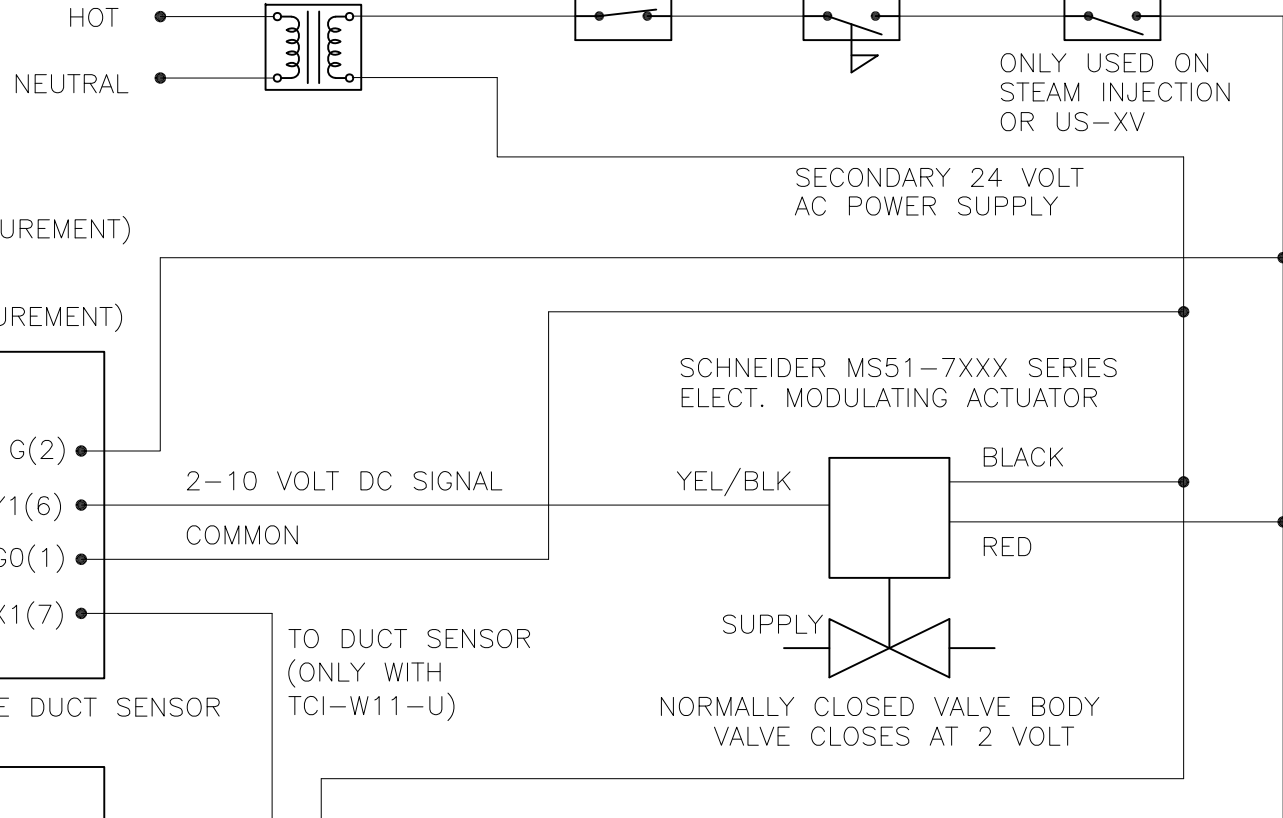
DATE	REV	RECORD	DR
11/20	A	E.C.# 6933	JK
9/22	B	E.C.# 7110	JK

CONFIDENTIAL

120/208/240 VOLT AC PRIMARY
 CLASS 2 TRANSFORMER TYPE AT175A-1008
 75 VA (BY DRI-STEEM, #408700-002)

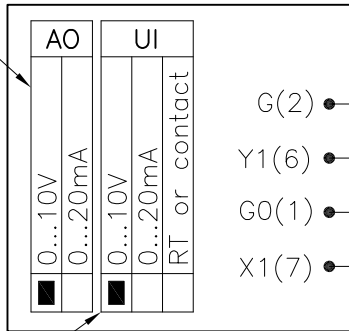
* OPTIONAL

* HIGH LIMIT HUMIDISTAT * AIR FLOW SWITCH * ELECTRIC HIGH TEMP



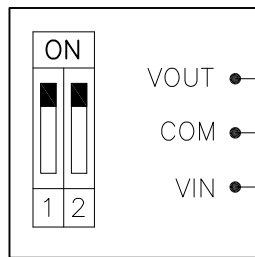
TCI-W11-U-H
 (ROOM RH MEASUREMENT)
 OR
 TCI-W11-U
 (DUCT RH MEASUREMENT)

AO JUMPER SET
 ON 0-10 VDC
 OUTPUT AT
 FACTORY



UI JUMPER SET
 ON 0-10 VDC
 INPUT AT FACTORY

THREE WIRE DUCT SENSOR
 (0-10VDC)



REFER TO VLV-190

OBSOLETE	SCHNEIDER MS51-7XXX SERIES VALVE W/TCI-W11-U-(H) HUMIDISTAT	
	MAT'L:	P/N
driSteem	SCALE:	VLV-197
	DRAWN BY: JK DATE: 11/4/20	