

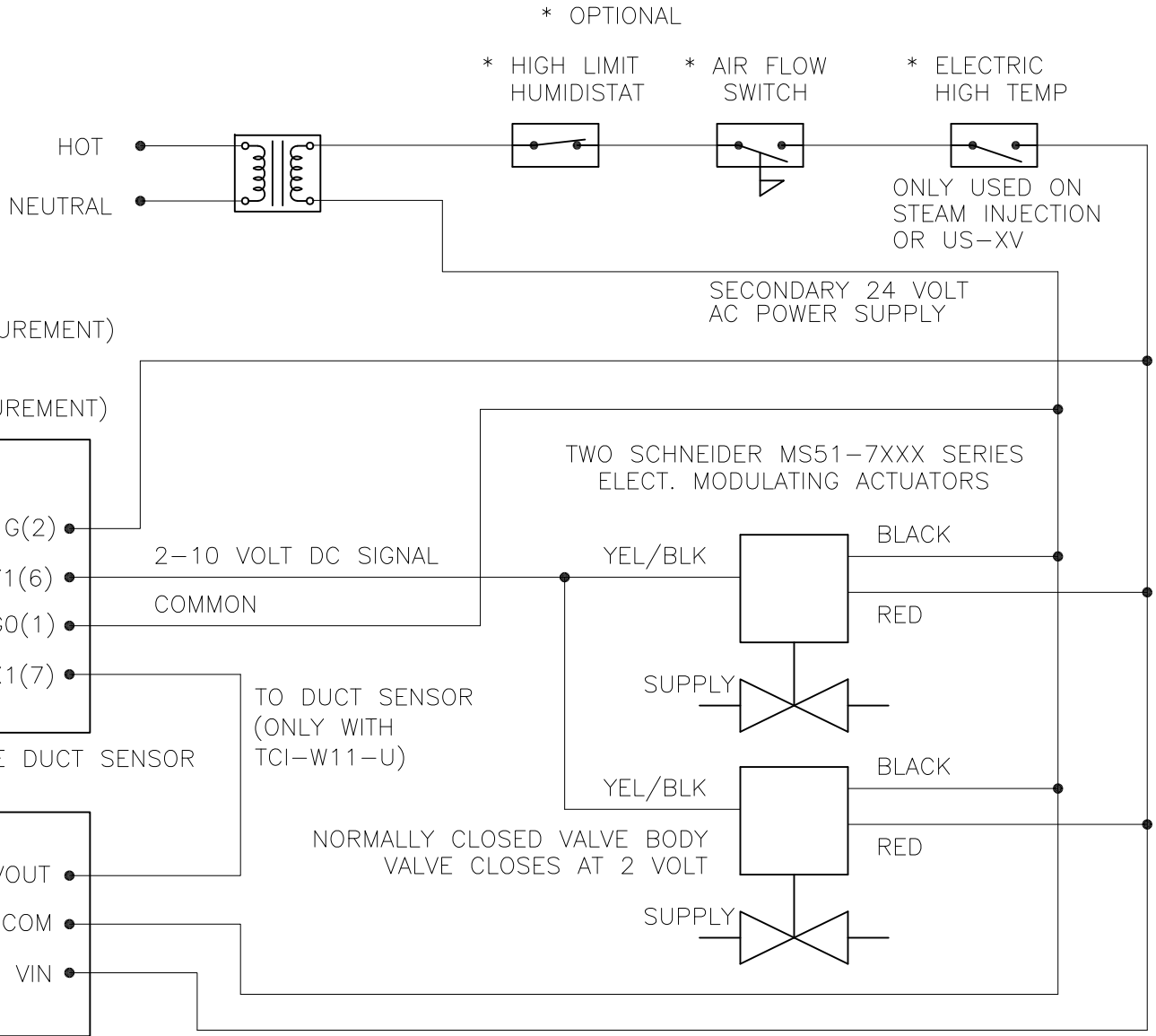
TWO SCHNEIDER MS51-7XXX SERIES VALVES W/TCI-W11-U-(H) HUMIDISTAT

230 VOLT TRANSFORMER

DATE	REV	RECORD	DR
11/20	A	E.C.# 6933	JK
9/22	B	E.C.# 7110	JK

CONFIDENTIAL

120/208/240 VOLT AC PRIMARY
 CLASS 2 TRANSFORMER TYPE AT175A-1008
 75 VA (BY DRI-STEEM, #408700-002)



TCI-W11-U-H
 (ROOM RH MEASUREMENT)
 OR
 TCI-W11-U
 (DUCT RH MEASUREMENT)

AO JUMPER SET ON 0-10 VDC OUTPUT AT FACTORY

AO	UI
0...10V	0...10V
0...20mA	0...20mA
	RT or contact

UI JUMPER SET ON 0-10 VDC INPUT AT FACTORY

ON
1 2

VOUT
 COM
 VIN

G(2)
 Y1(6)
 GO(1)
 X1(7)

2-10 VOLT DC SIGNAL
 COMMON

TO DUCT SENSOR (ONLY WITH TCI-W11-U)

THREE WIRE DUCT SENSOR (0-10VDC)

REFER TO VLV-190

OBSOLETE	TWO SCHNEIDER MS51-7XXX SERIES VALVES W/TCI-W11-U-(H) HUMIDISTAT	
	MAT'L:	
driSteem	SCALE:	P/N
	DRAWN BY: JK	VLV-190
	DATE: 11/4/20	