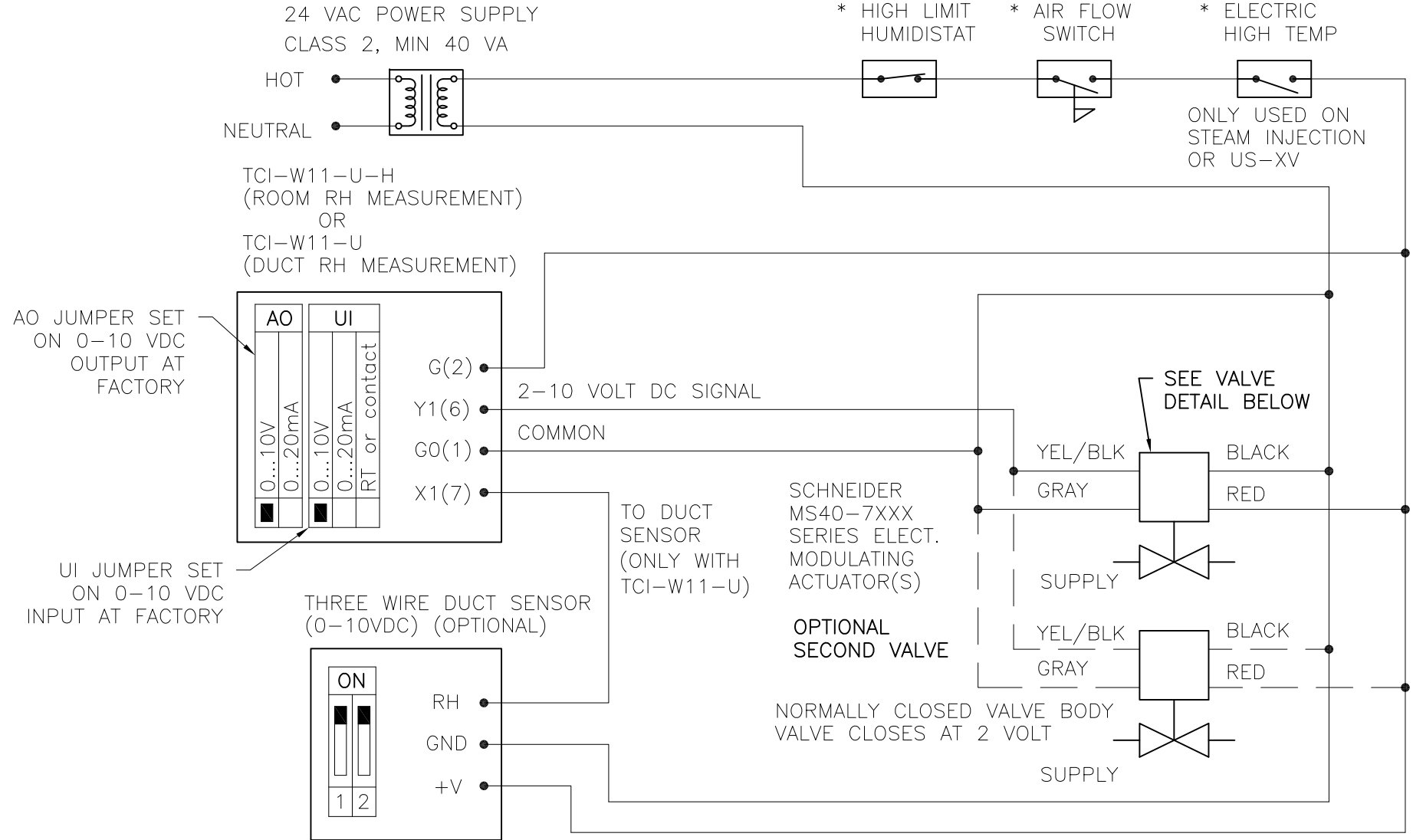


TWO SCHNEIDER MS40-7XXX SERIES VALVES W/TCI-W11-U-(H) HUMIDISTAT

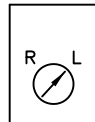
DATE	REV	RECORD	DR
9/22	A	E.C.# 7110	JK
2/24	B	E.C.# 7229	JK

CONFIDENTIAL

* OPTIONAL



(REVERSE ACTING)
"R" POSITION: VALVE
OPENS WITH DECREASING
DEMAND SIGNAL



(DIRECT ACTING)
"L" POSITION: VALVE
OPENS WITH INCREASING
DEMAND SIGNAL

VALVE DETAIL

TWO SCHNEIDER MS40-7XXX SERIES VALVES W/TCI-W11-U-(H) HUMIDISTAT		
MAT'L:		
SCALE:	P/N	
DRAWN BY: JK	VLV-207	
DATE: 9/13/22		

