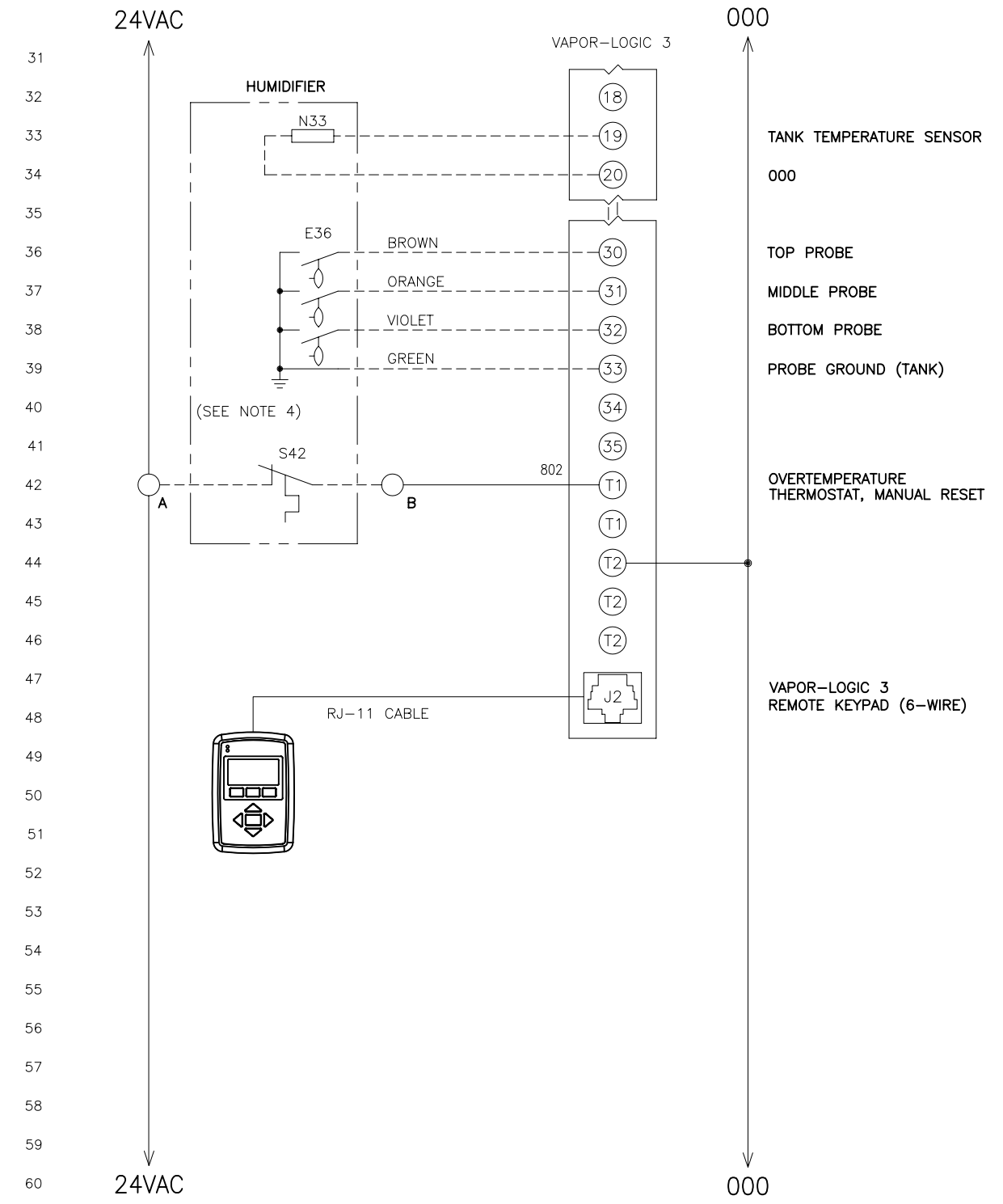
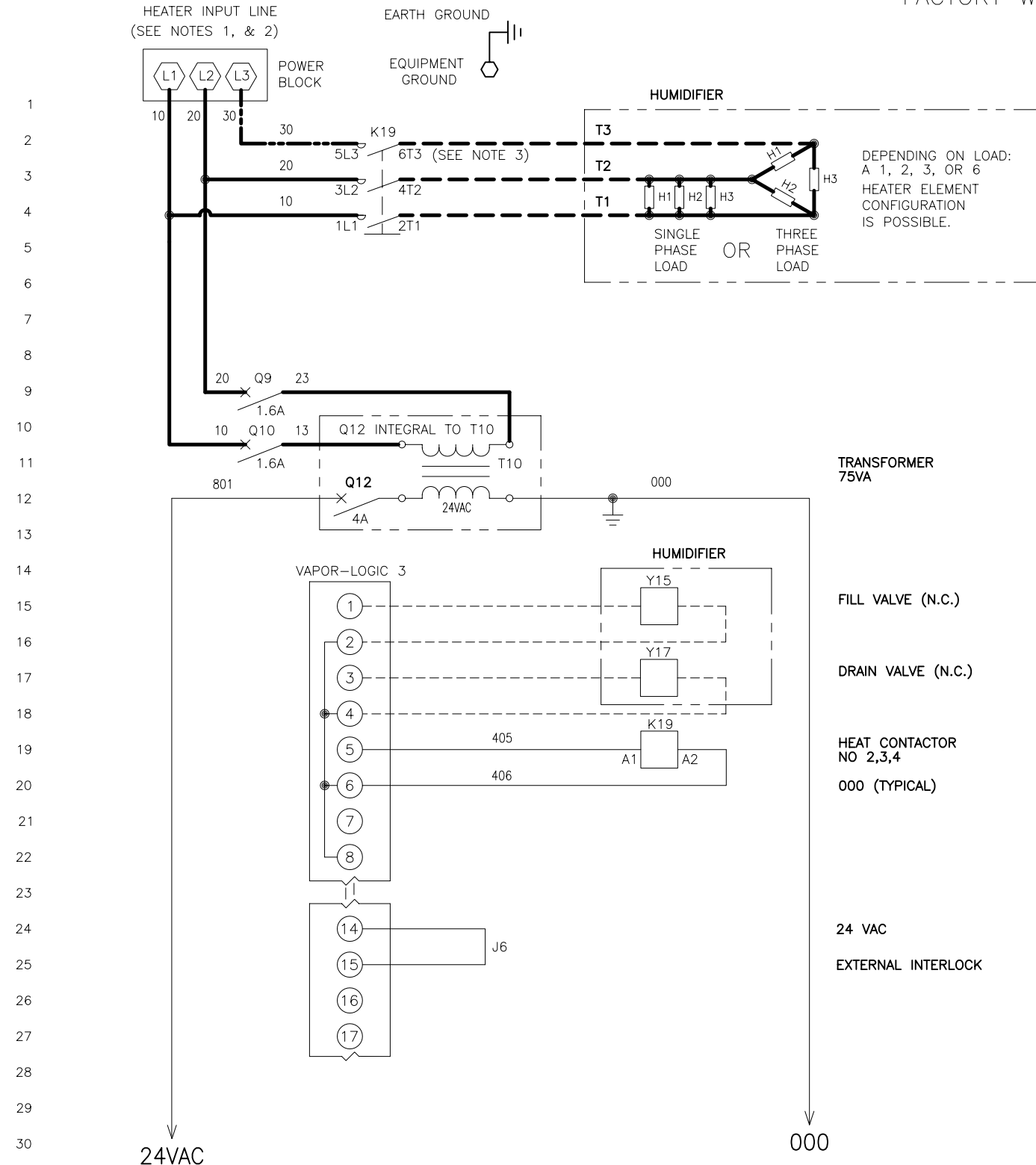


CRUV™ CE EVAPORATIVE HUMIDIFIER  
FACTORY WIRING DIAGRAM W/ VL3®

DATE	REV	RECORD	DR
12/04	G	E.C. # 4188	JK
12/04	H	E.C. # 4194	JK
2/07	I	E.C. # 4504	JK

THIS SYSTEM IS CONFIGURED FOR CONTROL ARRANGEMENT



- NOTES:
- INPUT LINE \_\_\_\_\_ VOLTS \_\_\_\_\_ PHASE, FOR HEATER(S) CIRCUIT: OPERATES ON 50/60 HERTZ.
  - FOR WIRING SIZING, HEATER CIRCUIT LINE AMPS: L1 \_\_\_\_\_ L2 \_\_\_\_\_ L3 \_\_\_\_\_  
RECOMMENDED LINE FUSING \_\_\_\_\_ AMPS. POWER BLOCK TERMINAL TORQUE \_\_\_\_\_ in-lbs|N-m  
CONTACTOR TERMINAL TORQUE \_\_\_\_\_ in-lbs|N-m  
VL3 CONTROL BOARD TORQUE \_\_\_\_\_ in-lbs|N-m
  - FOR THREE PHASE SYSTEM, THE THREE PHASE LOAD IS USED AND THIS WIRE IS FACTORY INSTALLED.
  - WATER LEVEL PROBE GROUND MUST BE CONNECTED TO TANK FOR PROPER HUMIDIFIER OPERATION.

LEGEND

<b>POWER WIRING</b>	K RELAY/CONTACTOR	Y SOLENOID
<b>CONTROL CIRCUIT WIRING</b>	T TRANSFORMER	N SENSOR
	Q CIRCUIT BREAKER	J JUMPER
	S SWITCH	E WATER PROBE
<b>FIELD WIRING</b>	H HEATER	M MOTOR/FAN

PROGRAM CODE: \_\_\_\_\_ MODEL: \_\_\_\_\_ ORDER NO: \_\_\_\_\_

BREAK TO EXTERNAL CONNECTIONS DIAGRAM

<b>DRISTEEM</b>	CRUV, STANDARD WATER CE DIAGRAM	
	MAT'L:	P/N
	SCALE:	CR-CE-VL3-1
DRAWN BY: THB		DATE: 10/7/99