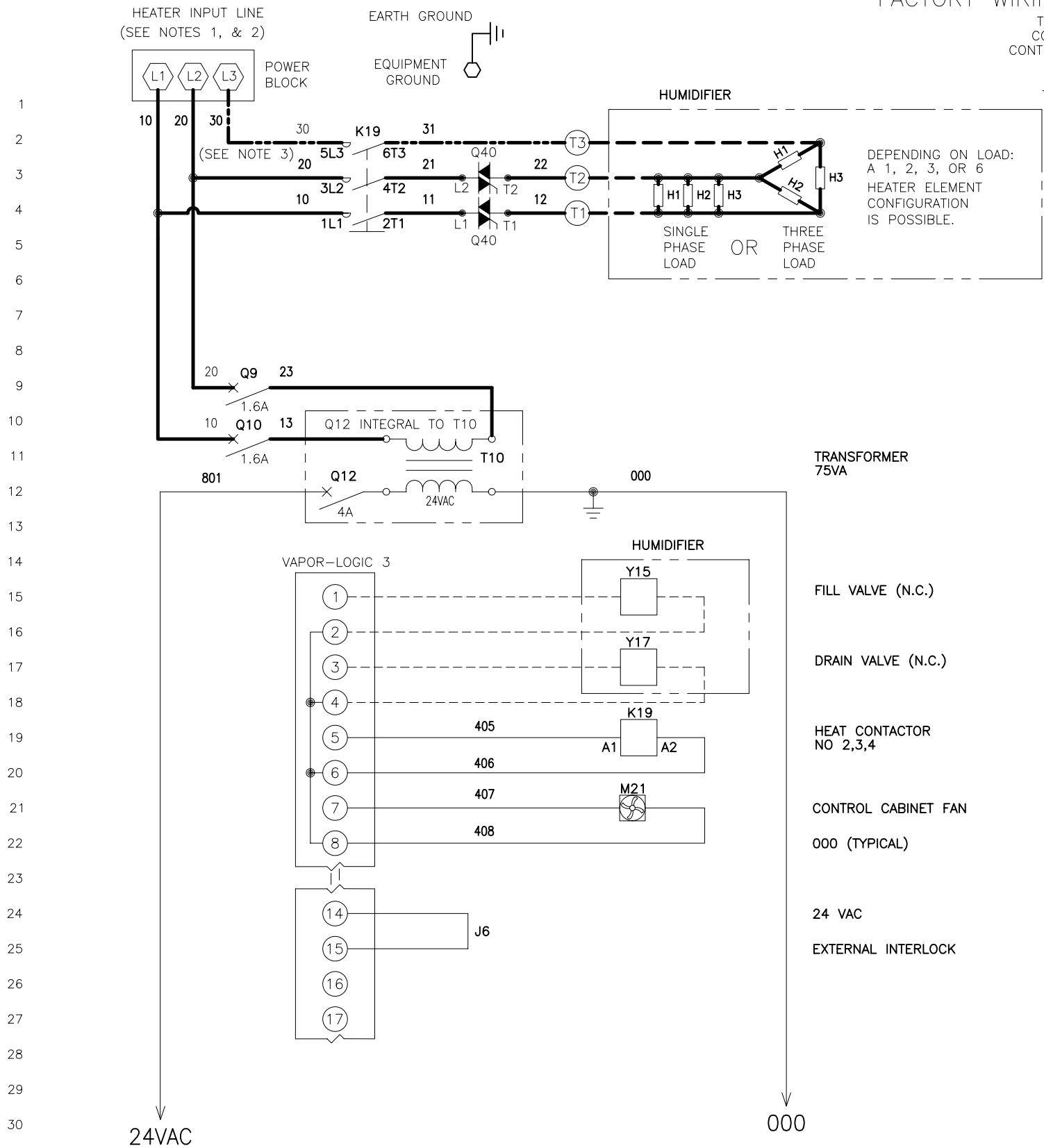


CRUV™ CE EVAPORATIVE HUMIDIFIER
FACTORY WIRING DIAGRAM W/ VL3®

DATE	REV	RECORD	DR
4/03	F	E.C. # 3848	JK
12/04	G	E.C. # 4194	JK
2/07	H	E.C. # 4504	JK

THIS SYSTEM IS CONFIGURED FOR CONTROL ARRANGEMENT

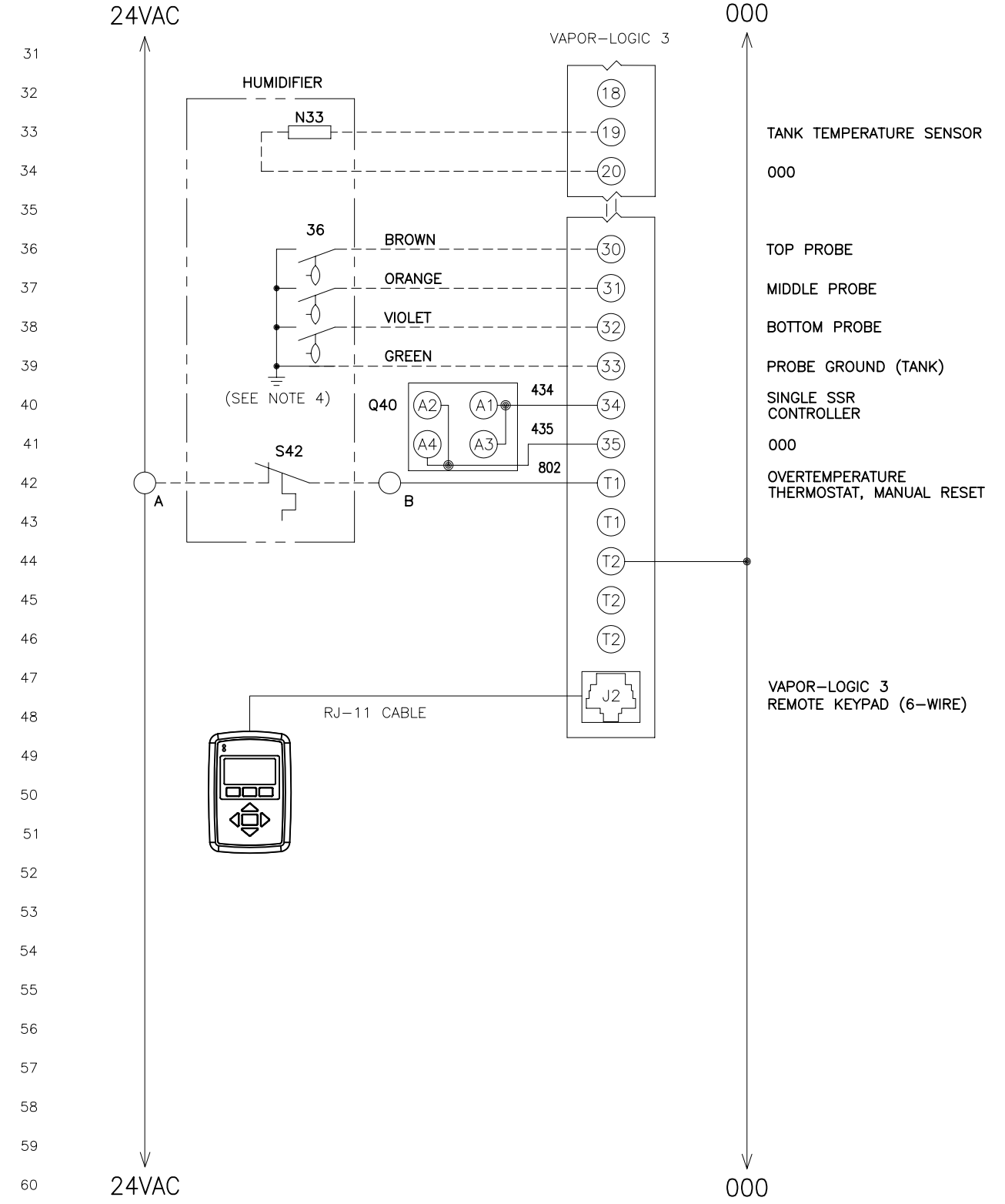


- NOTES:
- INPUT LINE _____ VOLTS _____ PHASE, FOR HEATER(S) CIRCUIT: OPERATES ON 50/60 HERTZ.
 - FOR WIRING SIZING, HEATER CIRCUIT LINE AMPS: L1 _____ L2 _____ L3 _____
RECOMMENDED LINE FUSING _____ AMPS. POWER BLOCK TERMINAL TORQUE _____ in-lbs|N-m
CONTACTOR TERMINAL TORQUE _____ in-lbs|N-m
VL3 CONTROL BOARD TORQUE _____ in-lbs|N-m
 - FOR THREE PHASE SYSTEM, THE THREE PHASE LOAD IS USED AND THIS WIRE IS FACTORY INSTALLED.
 - WATER LEVEL PROBE GROUND MUST BE CONNECTED TO TANK FOR PROPER HUMIDIFIER OPERATION.

LEGEND

POWER WIRING	K RELAY/CONTACTOR	Y SOLENOID
CONTROL CIRCUIT WIRING	T TRANSFORMER	N SENSOR
FIELD WIRING	Q CIRCUIT BREAKER	J JUMPER
	S SWITCH	E WATER PROBE
	H HEATER	M MOTOR/FAN

PROGRAM CODE: _____ MODEL: _____ ORDER NO: _____



BREAK TO EXTERNAL CONNECTIONS DIAGRAM

CR-CE-VL3-3

DRISTEEM

CRUV, STANDARD WATER SINGLE SSR CE DIAGRAM

MAT'L:

SCALE:

DATE: 10/10/99

P/N

CR-CE-VL3-3