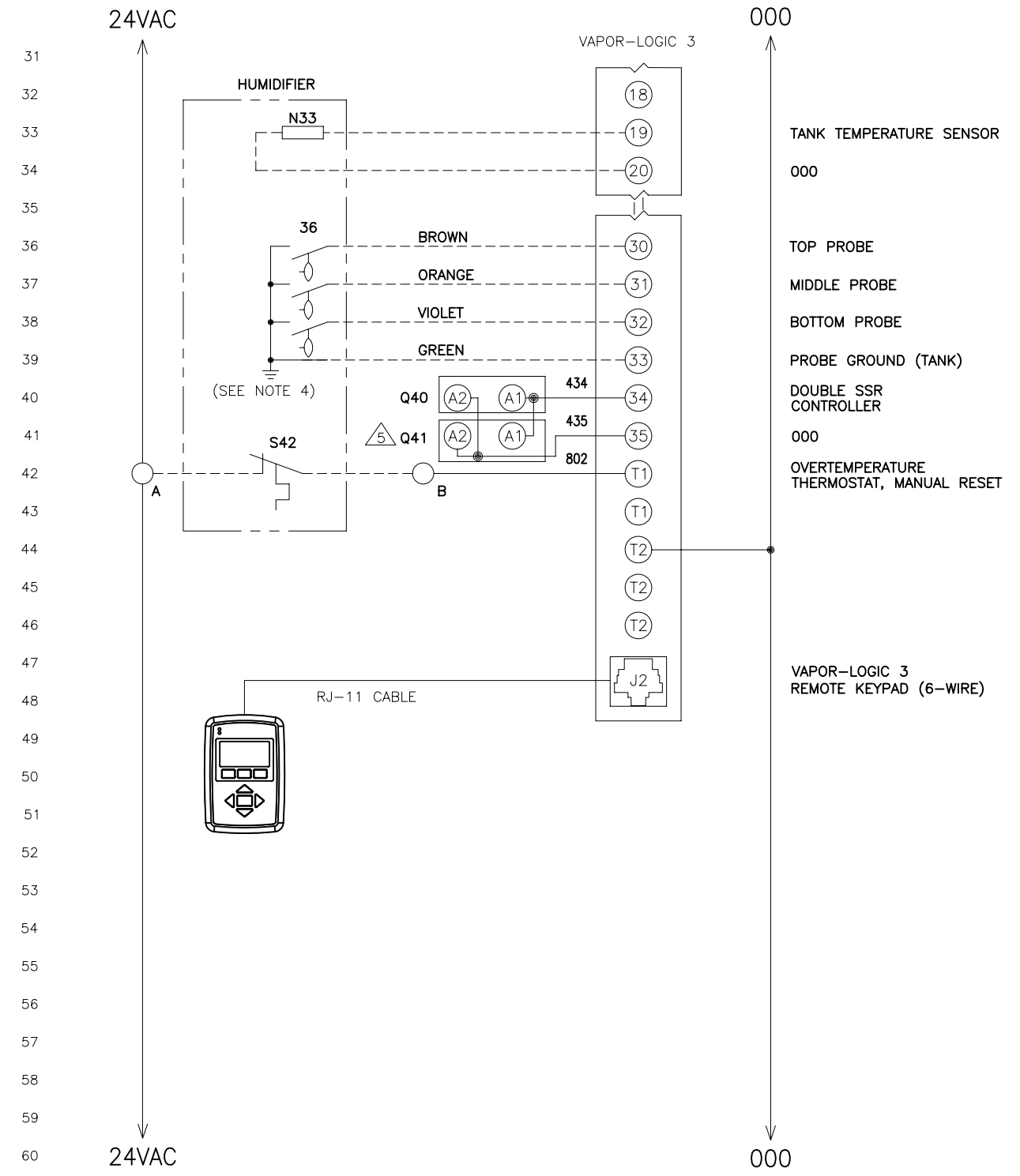
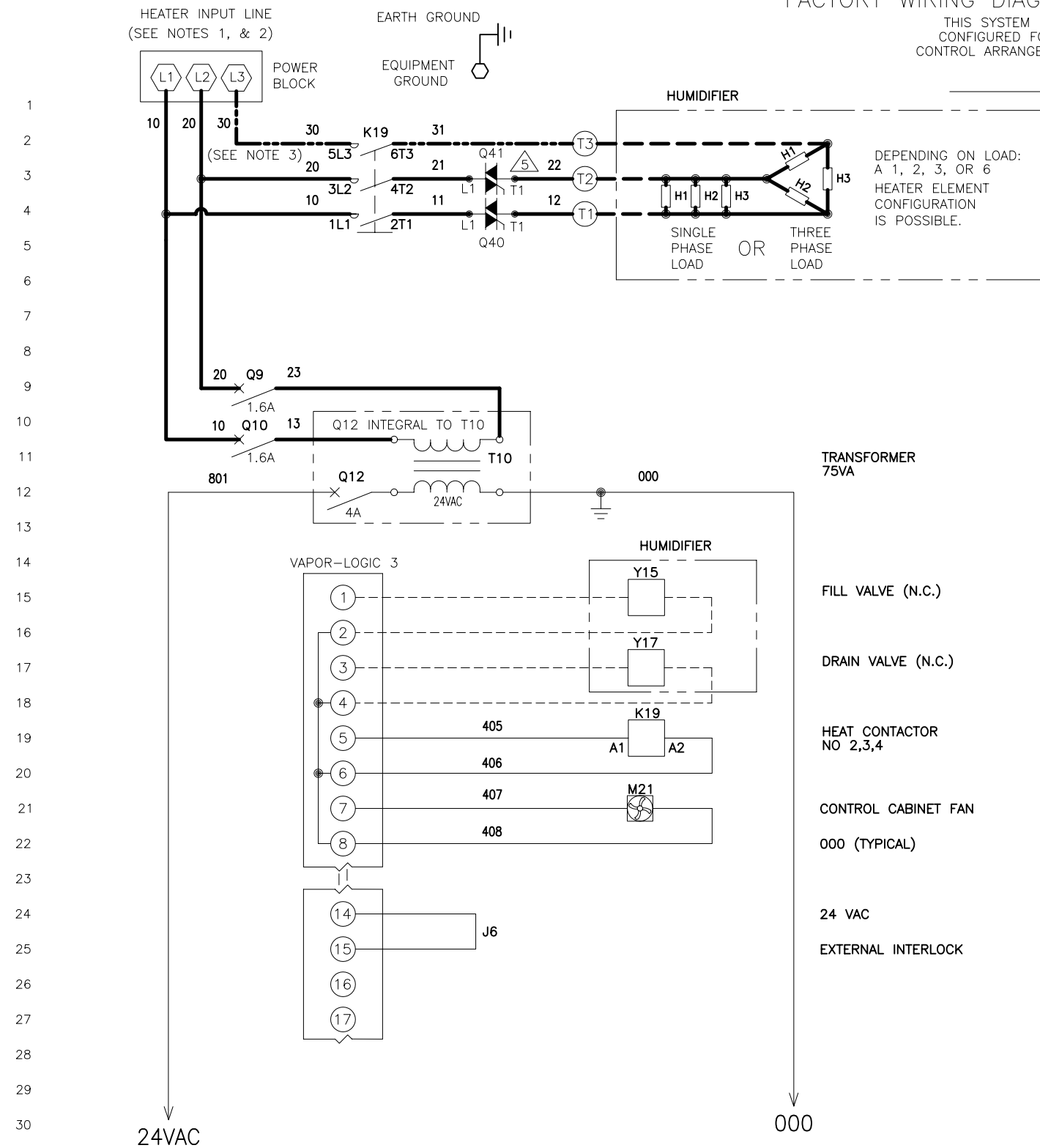


CRUV™ CE EVAPORATIVE HUMIDIFIER
FACTORY WIRING DIAGRAM W/ VL3®

DATE	REV	RECORD	DR
5/03	G	E.C. # 3848	DJF
12/04	H	E.C. # 4194	JK
2/07	I	E.C. # 4504	JK

THIS SYSTEM IS CONFIGURED FOR CONTROL ARRANGEMENT



NOTES:

- INPUT LINE _____ VOLTS _____ PHASE, FOR HEATER(S) CIRCUIT: OPERATES ON 50/60 HERTZ.
- FOR WIRING SIZING, HEATER CIRCUIT LINE AMPS: L1 _____ L2 _____ L3 _____
RECOMMENDED LINE FUSING _____ AMPS. POWER BLOCK TERMINAL TORQUE _____ in-lbs|N-m
CONTACTOR TERMINAL TORQUE _____ in-lbs|N-m
VL3 CONTROL BOARD TORQUE _____ in-lbs|N-m
- FOR THREE PHASE SYSTEM, THE THREE PHASE LOAD IS USED AND THIS WIRE IS FACTORY INSTALLED.
- WATER LEVEL PROBE GROUND MUST BE CONNECTED TO TANK FOR PROPER HUMIDIFIER OPERATION.

△ ONLY USED ON THREE PHASE POWER.

LEGEND

POWER WIRING
K RELAY/CONTACTOR
T TRANSFORMER
Q CIRCUIT BREAKER
S SWITCH
H HEATER

Y SOLENOID
N SENSOR
J JUMPER
E WATER PROBE
M MOTOR/FAN

BREAK TO EXTERNAL CONNECTIONS DIAGRAM

PROGRAM CODE: _____ MODEL: _____ ORDER NO: _____

DRISTEEM	CRUV, STANDARD WATER DOUBLE SSR CE DIAGRAM	
	MAT'L:	P/N
	SCALE:	CR-CE-VL3-4
	DATE: 10/7/99	