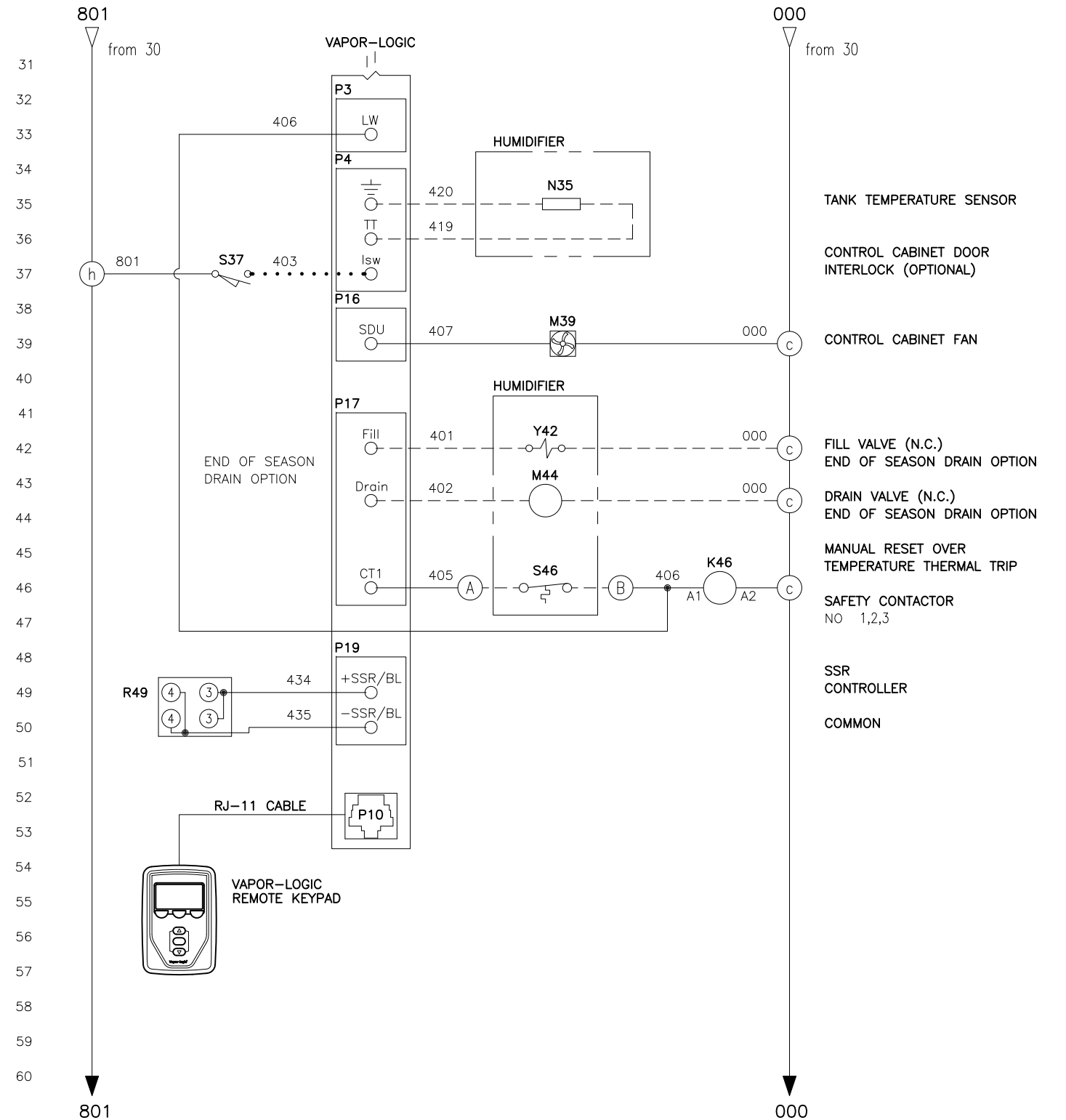
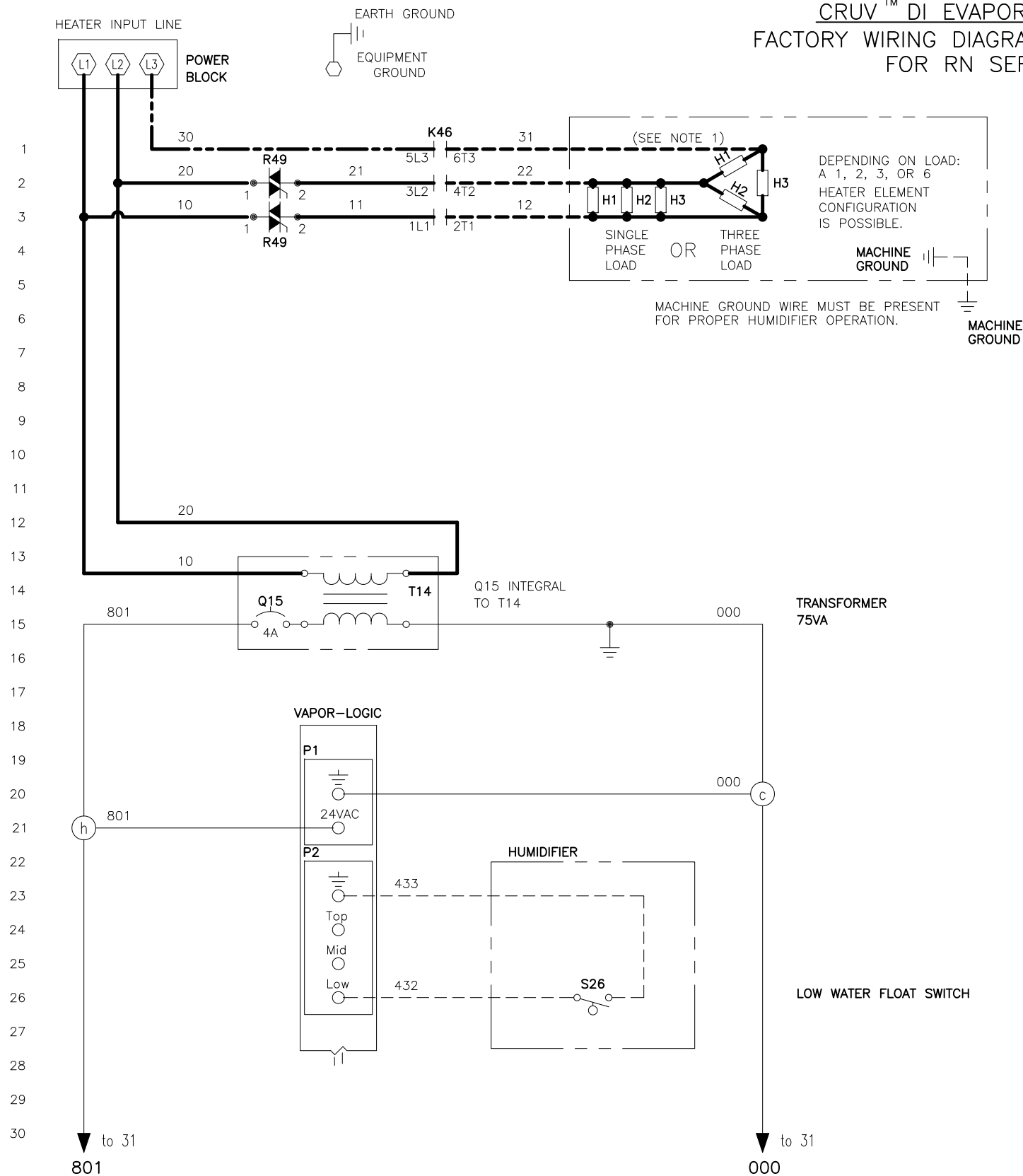


CRUV™ DI EVAPORATIVE HUMIDIFIER
FACTORY WIRING DIAGRAM WITH VAPOR-LOGIC
FOR RN SERIES SSR'S

| DATE | REV | RECORD | DR |
|-------|-----|------------|----|
| 11/13 | C | E.C.# 6157 | JK |
| 11/13 | D | E.C.# 6179 | JK |
| 3/14 | E | E.C.# 6238 | JK |



NOTES:

- FOR THREE PHASE SYSTEM, THE THREE PHASE LOAD IS USED AND THIS WIRE IS FACTORY INSTALLED.
- REFER TO CRUV ELECTRICAL DATA SHEET.

POWER WIRING
CONTROL CIRCUIT WIRING
FIELD WIRING
OPTIONAL FACTORY
OPTIONAL FIELD

LEGEND

- | | | | |
|---|-----------------|---|-------------------|
| K | RELAY/CONTACTOR | Y | SOLENOID |
| T | TRANSFORMER | N | SENSOR |
| J | JUMPER | J | JUMPER |
| Q | CIRCUIT BREAKER | E | WATER PROBE |
| S | SWITCH | M | MOTOR/FAN |
| H | HEATER | R | SOLID STATE RELAY |
| F | FUSE | | |

BREAK TO EXTERNAL CONNECTIONS DIAGRAM

| | | |
|--|---|----------|
| | DOMESTIC CRUV, DI WATER, 600V SSR DIAGRAM | |
| | MATERIAL: | |
| | SCALE: | P/N |
| | DATE: 12/28/12 | CR-VL5-8 |