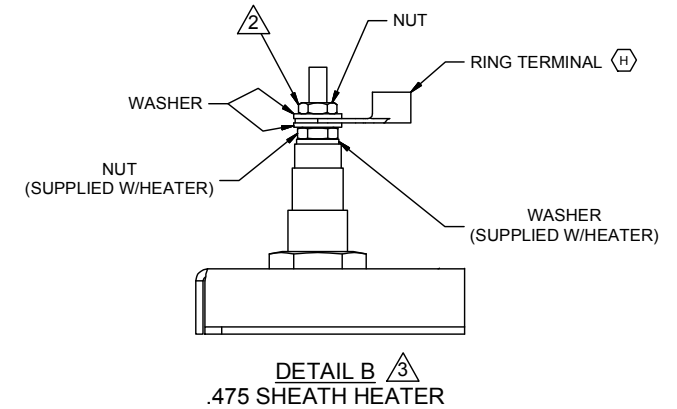
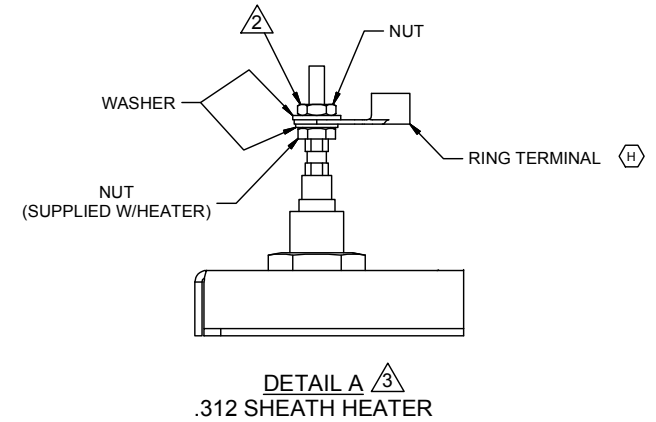
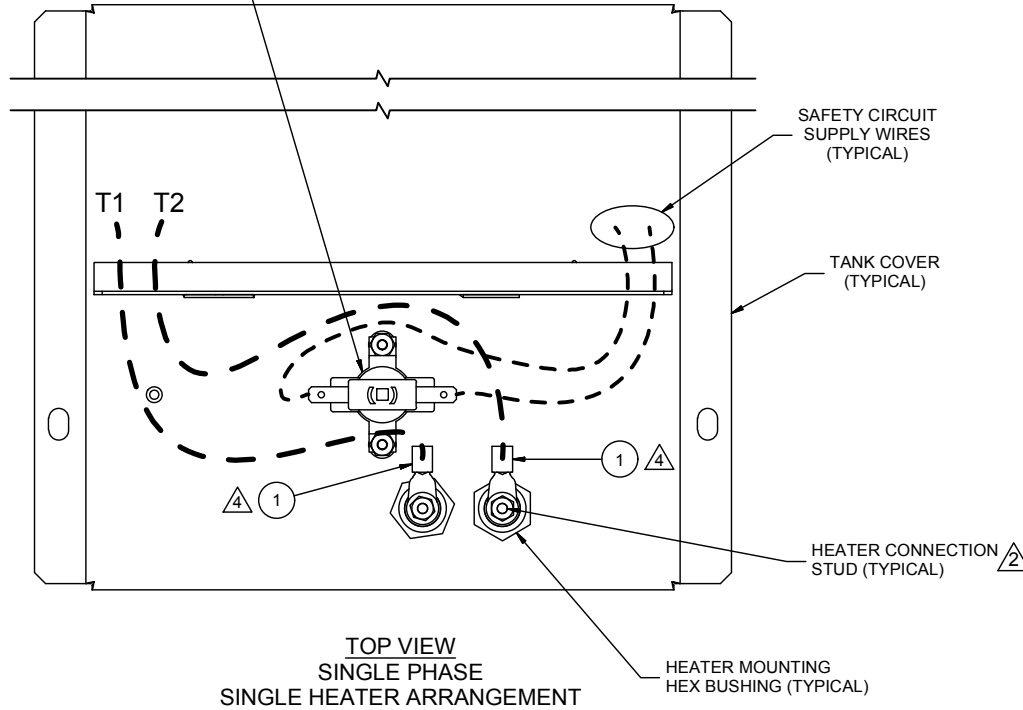


CONFIDENTIAL

REVISION HISTORY			
REV	E C#	DATE	BY
F	3647	1/02	DJF
G	5090	6/8/2010	JK
H	5525	11/4/2011	AJK

MANUAL RESET SURFACE MOUNT THERMOSTAT (TYPICAL)



LEGEND

- - - - - FIELD WIRING ON CRUV - PROBE OR DI/LWCO WIRES ARE FACTORY WIRED INTO TERMINAL COVER.
- - - - - ALL FACTORY WIRING ON VM MODELS.

CAUTION:

ALL WIRING TO VAPORIZING TANK MUST BE UL AND CSA APPROVED AND RATED FOR 600 VOLT, 105° C.

NOTES:

1. HEATER WIRING IS THE SAME FOR STANDARD WATER AND DI/RO WATER HUMIDIFIERS.
- Δ 2 SEE MECHANICAL & ELECTRICAL TORQUE REQUIREMENTS WORK INSTRUCTIONS.
- Δ 3 TO ASSURE PROPER SPACING OF HEATER TERMINAL CONNECTIONS, USE DETAIL A AND DETAIL B FOR ARRANGEMENT OF WASHERS, NUTS, AND WIRE LUGS TO HEATER TERMINALS. DETAIL A IS FOR .312 SHEATH HEATERS AND DETAIL B IS FOR .475 SHEATH HEATERS.
- Δ 4 FOR 6AWG WIRE USE #409250-032 TERMINAL RING (H)
FOR 8AWG WIRE USE #409250-031 TERMINAL RING
FOR 14,12,10AWG WIRE USE #409250-030 TERMINAL RING

Δ 4	1	TERMINAL RING 14-10 X10 NON-INS	2	409250-030
Δ 4	1	TERMINAL RING 8 X10 NON-INS	2	409250-031
Δ 4	1	TERMINAL RING 6 X10 NON-INS	2	409250-032
ITEM	DESCRIPTION		QTY	PART NUMBER

PARTS LIST

DRISTEEM		BUSS BAR WIRING, VM/CRUV/HT-2	
		MATL:	
		SCALE: 1:3	P/N VM99-BUSS-1
		DRAWN BY: JK	DATE: 6/8/10
		SIZE A	SHEET 1 OF 1