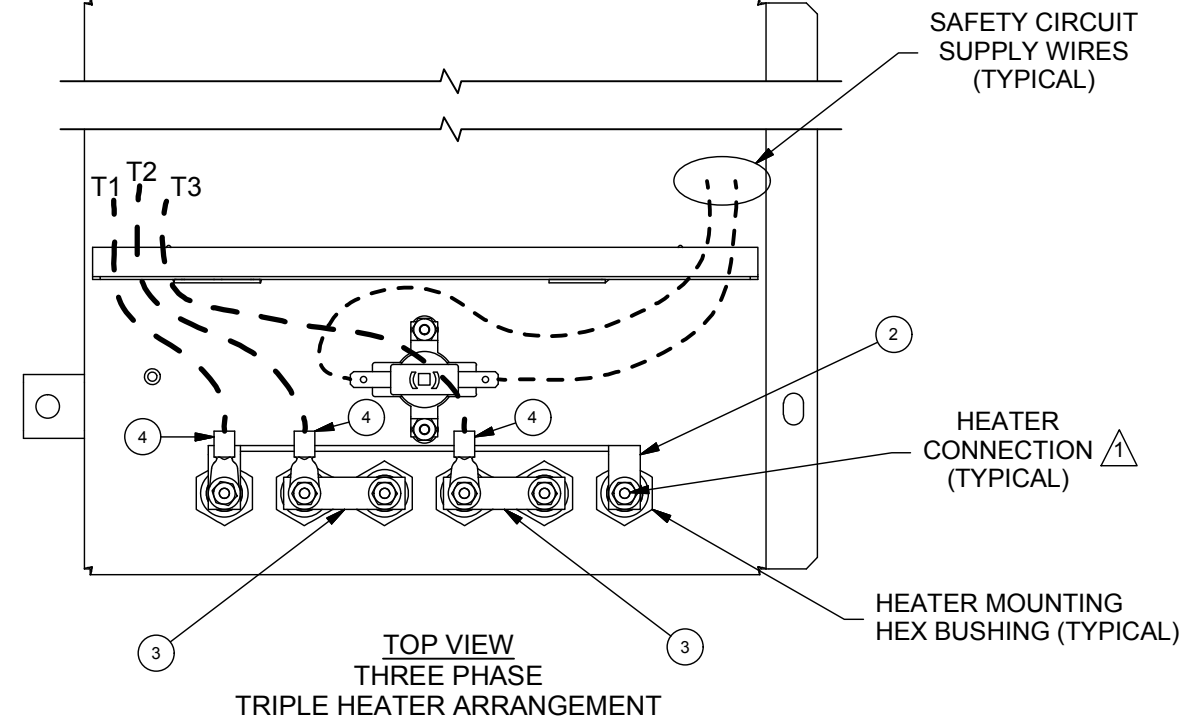
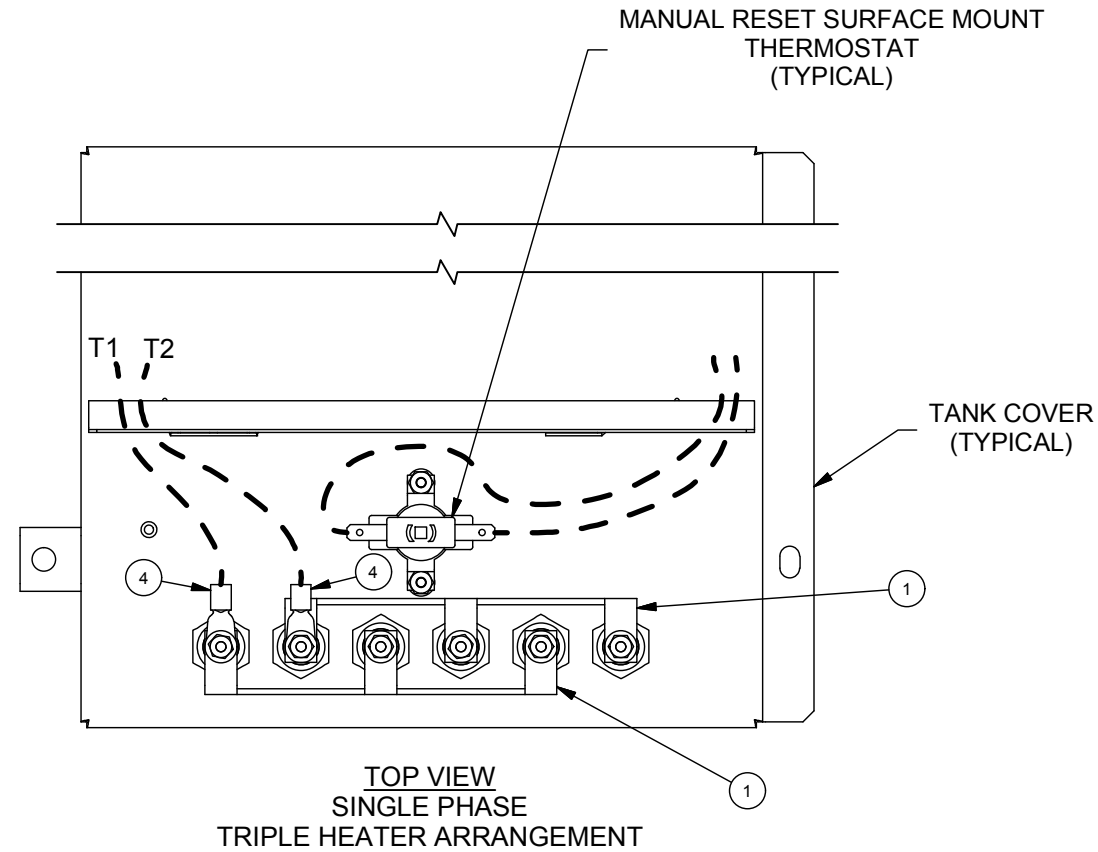


REVISION HISTORY			
REV	E C#	DATE	BY
J	5090	6/9/2010	JK
K	5525	11/4/2011	AJK
L	5703	2/21/2012	JK

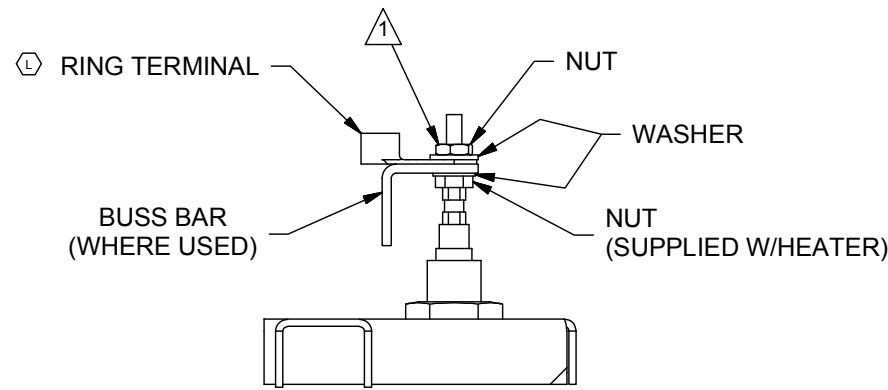


LEGEND

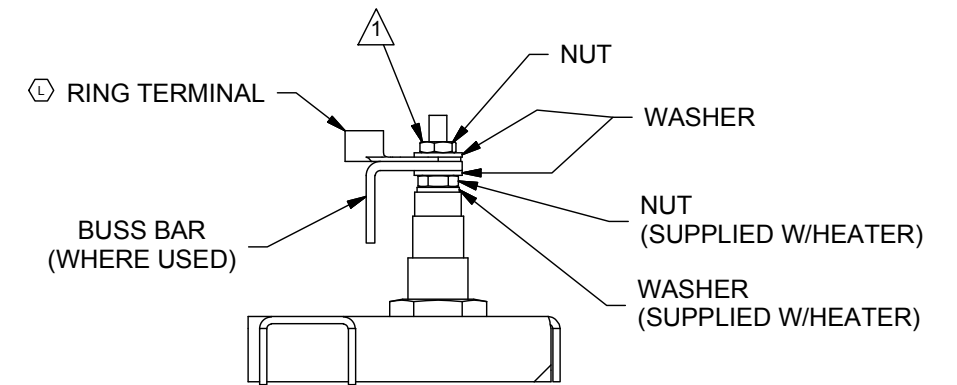
- FIELD WIRING ON CRUV - PROBE OR DI LWCO SWITCH WIRES ARE FACTORY WIRED INTO TERMINAL COVER.
- ALL FACTORY WIRING ON VM MODELS.

NOTES:

- 1 SEE MECHANICAL AND ELECTRICAL TORQUE REQUIREMENTS WORK INSTRUCTION.
- 2 TO ASSURE PROPER SPACING OF HEATER TERMINAL CONNECTIONS, USE DETAIL A AND DETAIL B FOR ARRANGEMENT OF WASHERS, NUTS, BUSS BARS, AND LUGS TO HEATER TERMINALS. DETAIL A IS FOR .312 SHEATH HEATERS AND DETAIL B IS FOR .475 SHEATH HEATERS
3. HEATER WIRING IS THE SAME FOR STANDARD WATER AND DI/RO WATER HUMIDIFIERS.
4. ON SINGLE AND THREE PHASE VM/CRUV-10 240 VOLT HEATER BUSHINGS ARE DIFFERENT. SECURE 4KW HEATER LAST.
- 5 FOR 6AWG WIRE USE #409250-032 TERMINAL RING FOR 8AWG WIRE USE #409250-031 TERMINAL RING FOR 14,12,10AWG WIRE USE #409250-030 TERMINAL RING
- 6 QTY 2 ON SINGLE PHASE
QTY 3 ON THREE PHASE



DETAIL A .312 SHEATH HEATER



DETAIL B .475 SHEATH HEATER

CAUTION:

ALL WIRING TO VAPORIZING TANK MUST BE UL AND CSA APPROVED AND RATED FOR 600 VOLT, 105° C.

WHEN THREE PHASE NEUTRAL IS REQUIRED, GAUGE WIRE SIZE SAME AS HEATER FEED.

ITEM	DESCRIPTION	QTY	PART NUMBER
4	TERMINAL RING 14-10 X10 NON-INS	2	409250-030
4	TERMINAL RING 8 X10 NON-INS	2	409250-031
4	TERMINAL RING 6 X10 NON-INS	2	409250-032
3	BUSS BAR, 0.50 X 1.898	2	167760-001
2	BUSS BAR 1.20 X 6.75	1	167760-003
1	BUSS BAR 1.20 X 5.50 WYE	2	167755-001

PARTS LIST			
BUSS BAR WIRING, VM/CRUV/HT-10-25			
DRISTEEM			
MATL:	SCALE: 1:3	P/N	VM99-BUSS-3
DRAWN BY: JK	DATE: 6/9/10	SIZE B	SHEET 1 OF 1