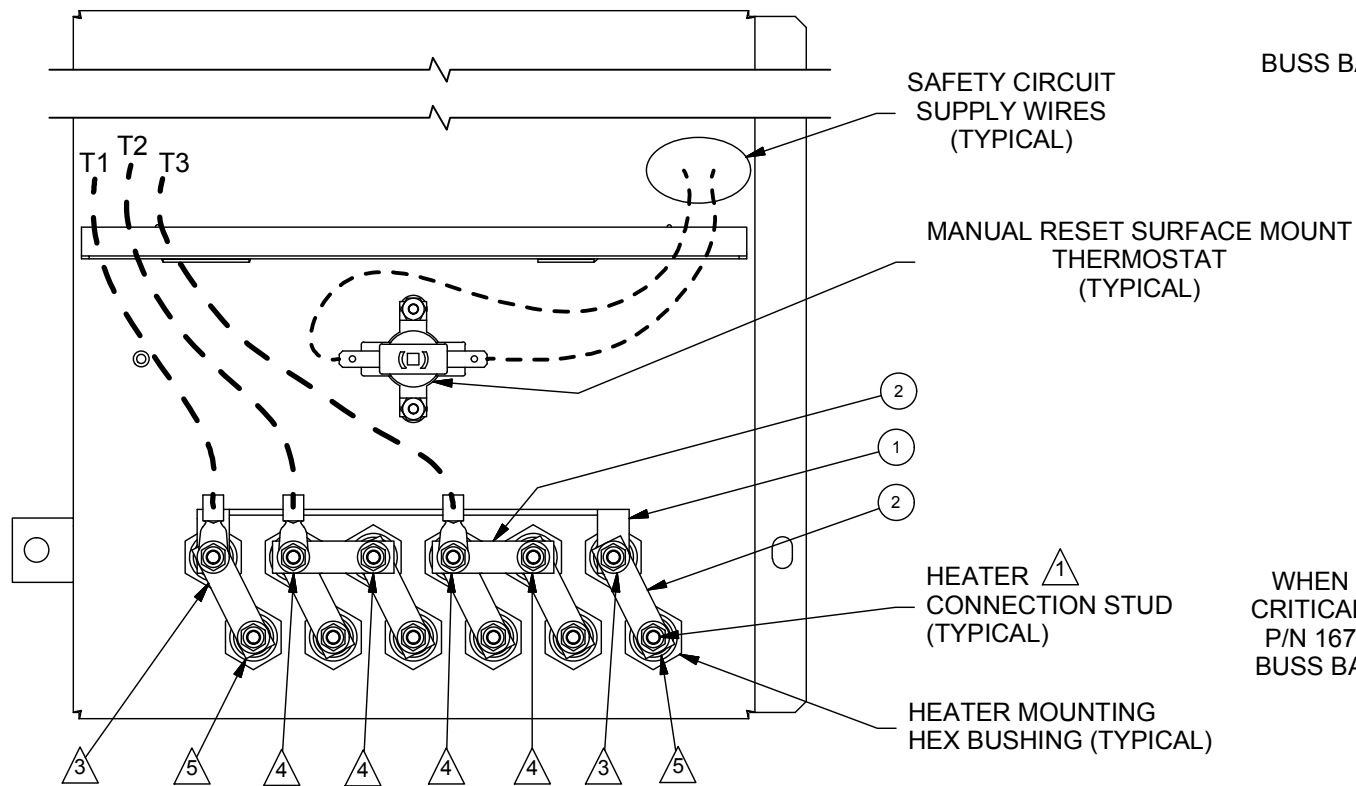


REVISION HISTORY			
REV	E C#	DATE	BY
H	3647	1/02	DJF
I	5090	6/10/2010	JK
J	5525	11/1/2011	AJK



TOP VIEW
THREE PHASE DELTA
SIX HEATER ARRANGEMENT

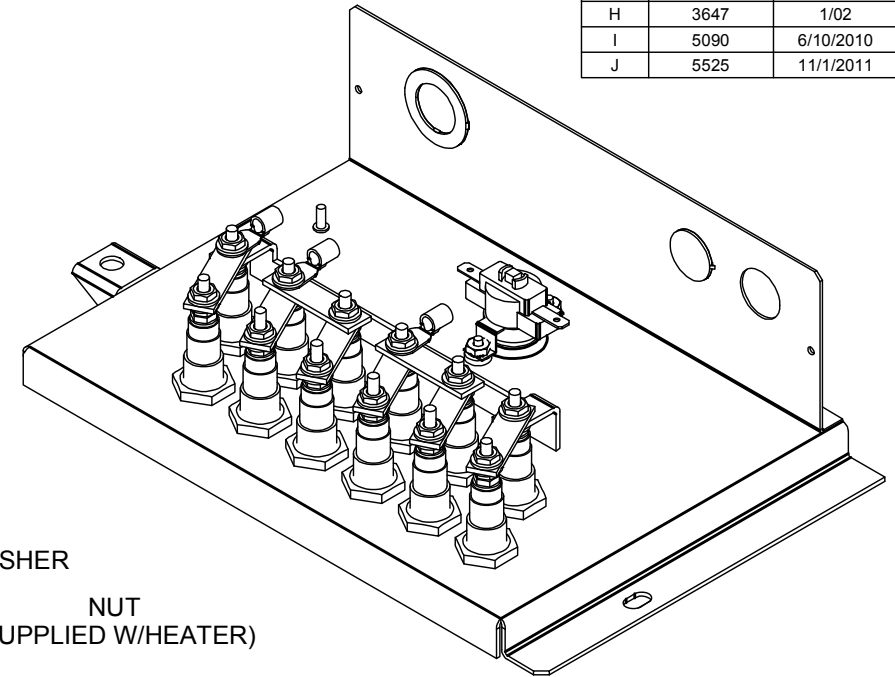
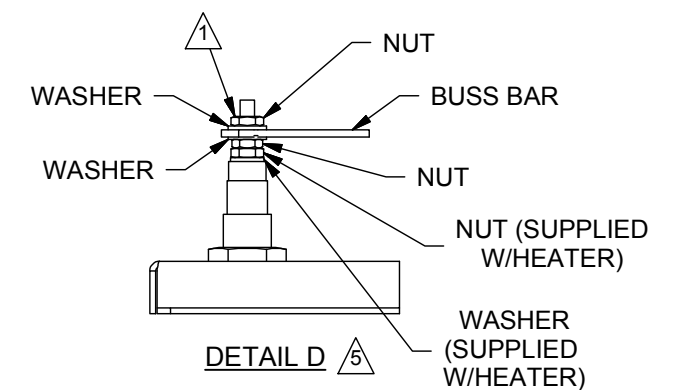
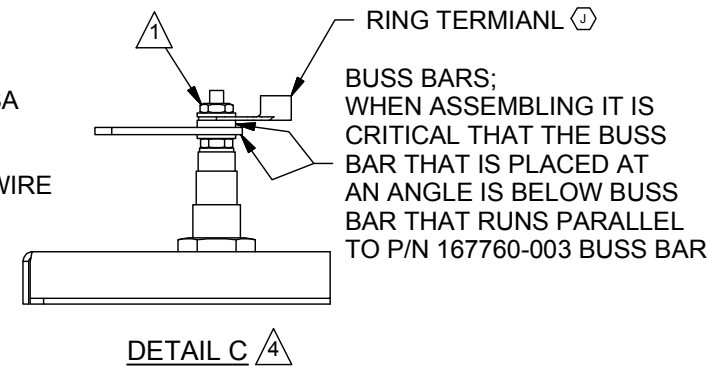
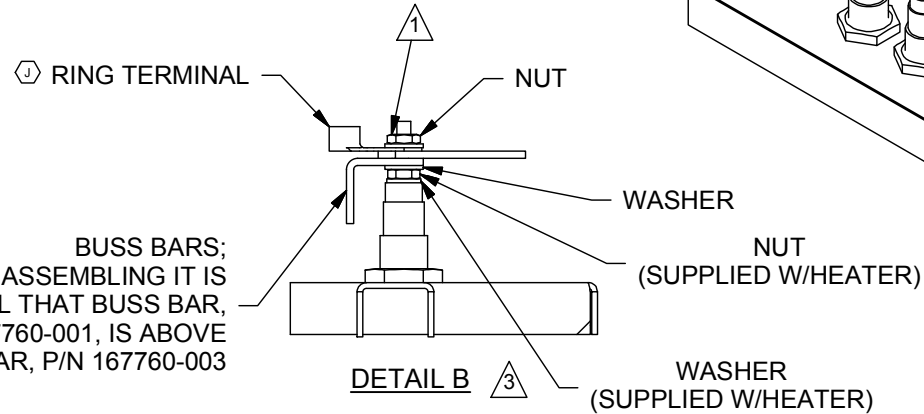
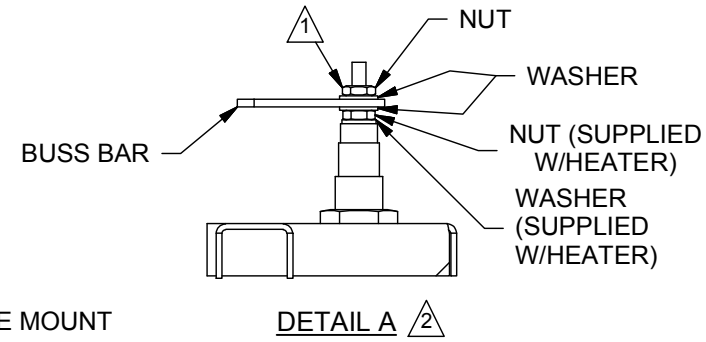
NOTES:

- 1 SEE MECHANICAL AND ELECTRICAL TORQUE REQUIREMENTS WORK INSTRUCTIONS.
- 2 TO ASSURE PROPER SPACING OF HEATER TERMINAL CONNECTIONS USE DETAIL A, UNLESS ANOTHER DETAIL VIEW IS CALLED OUT, FOR ARRANGEMENT OF WASHERS, NUTS, AND BUSS BARS, TO HEATER TERMINALS.
- 3 AT THESE LOCATIONS, USE DETAIL B FOR ARRANGEMENT OF WASHERS, NUTS, BUSS BARS, AND WIRE LUGS TO HEATER TERMINALS. NOTE AT THESE LOCATIONS IT IS CRITICAL THAT BUSS BAR, P/N 167760-001 IS ABOVE BUSS BARS, P/N 167760-003.
- 4 AT THESE LOCATIONS, USE DETAIL C FOR ARRANGEMENT OF WASHERS, NUTS, BUSS BARS, AND WIRE LUGS TO HEATER TERMINALS. NOTE AT THESE LOCATIONS IT IS CRITICAL THE BUSS BAR THAT IS PLACED AT AN ANGLE IS BELOW BUSS BAR THAT RUNS PARALLEL TO P/N 167760-003 BUSS BAR.
- 5 AT THESE LOCATIONS, USE DETAIL D FOR ARRANGEMENT OF WASHERS, NUTS, AND BUSS BAR TO HEATER TERMINALS. NOTE AT THESE LOCATIONS A EXTRA NUT IS REQUIRED FOR PROPER SPACING.
- 6. HEATER WIRING IS THE SAME FOR STANDARD WATER AND DI/RO WATER HUMIDIFIERS.

CAUTION:

ALL WIRING TO VAPORIZING TANK MUST BE UL AND CSA APPROVED AND RATED FOR 600 VOLT, 105° C.
WHEN THREE PHASE NEUTRAL IS REQUIRED, GAUGE WIRE SIZE SAME AS HEATER FEED LINES.

- 7 FOR 6AWG WIRE USE #409250-032 TERMINAL RING
FOR 8AWG WIRE USE #409250-031 TERMINAL RING
FOR 14, 12, 10AWG WIRE USE #409250-030 TERMINAL RING



ISOMETRIC VIEW
THREE PHASE DELTA
SIX HEATER ARRANGEMENT

LEGEND

- - - - - FIELD WIRING CRUV - PROBE OR DI LWCO SWITCH WIRES ARE FACTORY WIRED INTO TERMINAL COVER.
- - - - - ALL FACTORY WIRING ON VM MODELS.

ITEM	DESCRIPTION	QTY	PART NUMBER
4	TERMINAL RING 14-10 X10 NON-INS	3	409250-030
4	TERMINAL RING 8 X10 NON-INS	3	409250-031
4	TERMINAL RING 6 X10 NON-INS	3	409250-032
2	BUSS BAR, 0.50 X 1.898	8	167760-001
1	BUSS BAR 1.20 X 6.75	1	167760-003

PARTS LIST

DRISTEEM		BUSS BAR WIRING, VM/CRUV/HT-30-34	
		MATL:	
		SCALE: 1:3	P/N VM99-BUSS-4
		DATE: 6/10/10	SIZE B SHEET 1 OF 1