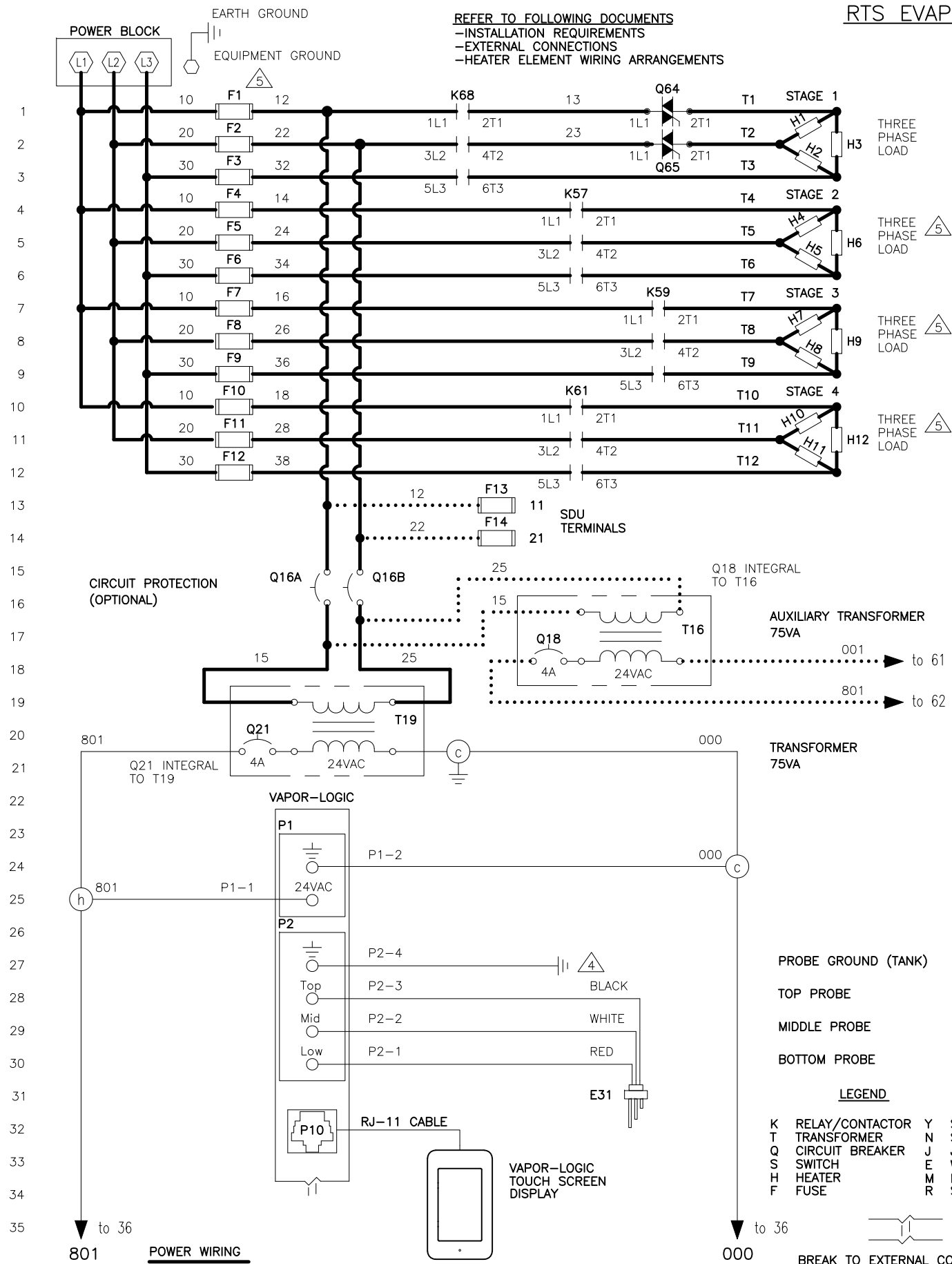


# RTS EVAPORATIVE HUMIDIFIER

DATE	REV	RECORD	DR
7/21	D	E.C.# 7004	JK
7/23	E	E.C.# 7181	AJK

REFER TO FOLLOWING DOCUMENTS  
 -INSTALLATION REQUIREMENTS  
 -EXTERNAL CONNECTIONS  
 -HEATER ELEMENT WIRING ARRANGEMENTS

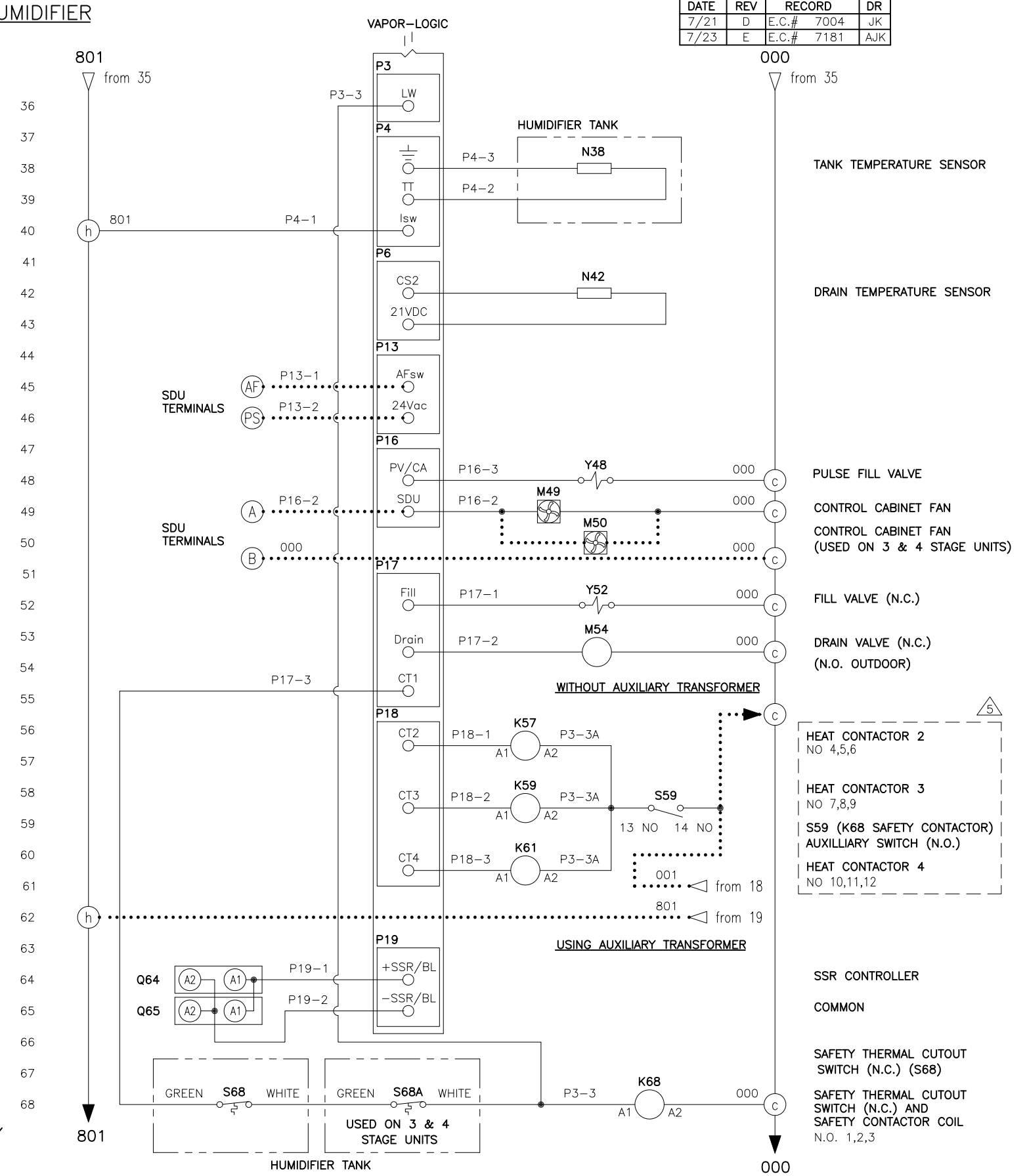


**LEGEND**

K RELAY/CONTACTOR	N SOLENOID
T TRANSFORMER	Y SENSOR
Q CIRCUIT BREAKER	J JUMPER
S SWITCH	E WATER PROBE
H HEATER	M MOTOR/FAN
F FUSE	R SOLID STATE RELAY

**NOTES:**

1. WIRING AND BRANCH CIRCUIT PROTECTION PROVIDED BY INSTALLER AS PER NATIONAL ELECTRICAL CODE.
2. FOR SUPPLY HEATER AND MACHINE GROUND CONNECTIONS, SIZE WIRE USING 75°C WIRE TABLE PER NATIONAL ELECTRICAL CODE.
3. USE COPPER CONNECTORS RATED FOR 105°C.
4. WATER LEVEL PROBE GROUND MUST BE CONNECTED TO TANK FOR PROPER HUMIDIFIER OPERATION.



5. WIRING DIAGRAM SHOWS MAXIMUM NUMBER OF STAGES. YOUR PARTICULAR HUMIDIFIER MAY HAVE LESS. ON SINGLE STAGE UNITS, FUSES AND FUSE BLOCKS ARE OMITTED.

**POWER WIRING**  
**CONTROL CIRCUIT WIRING**  
**FIELD WIRING**  
**OPTIONAL FACTORY**  
**OPTIONAL FIELD**

		RTS THREE PHASE WIRING DIAGRAM	
		MAT'L:	P/N
SCALE:	DATE: 10/21/20	RTS-VL-1	
DRAWN BY: JK			