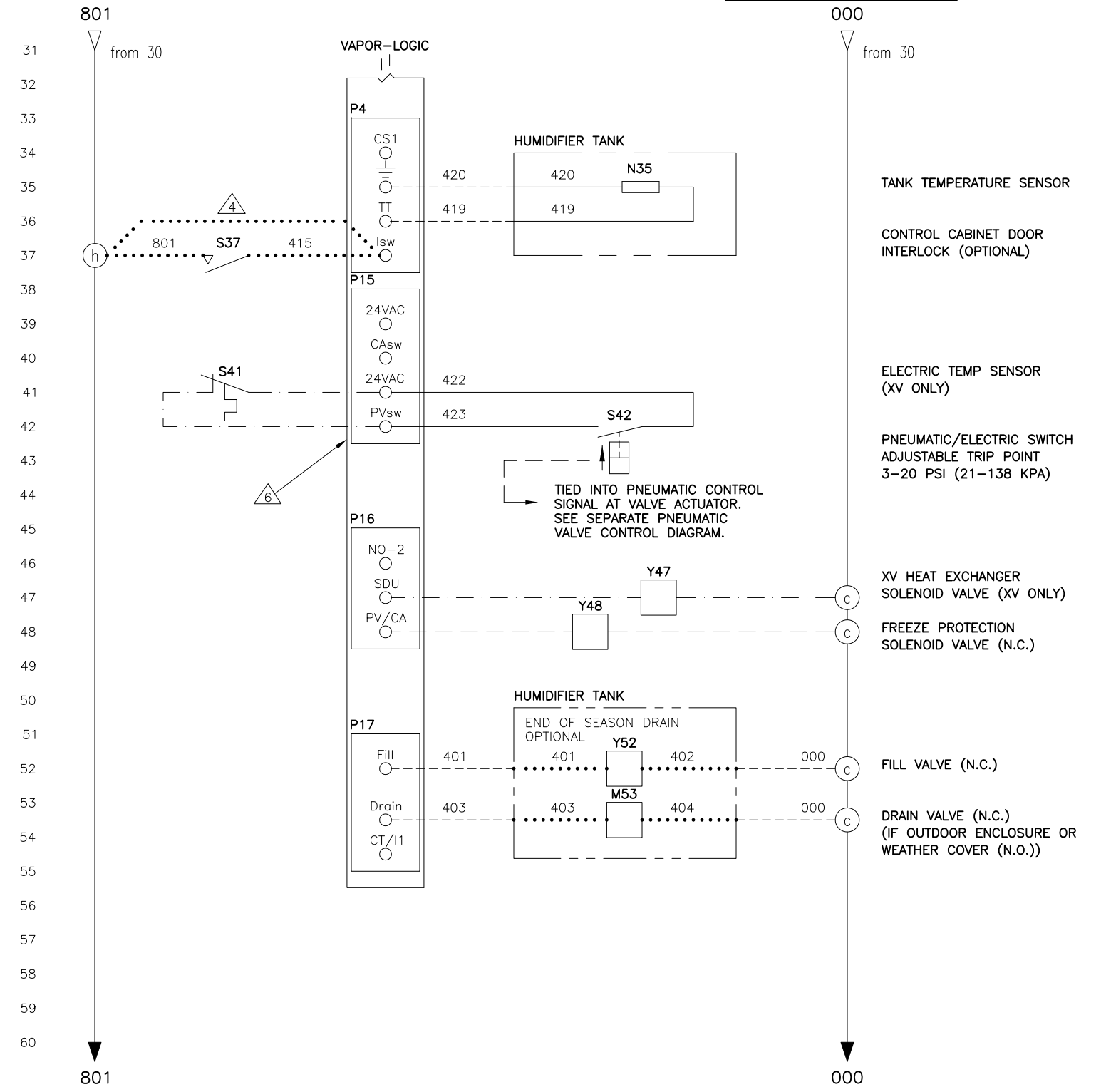
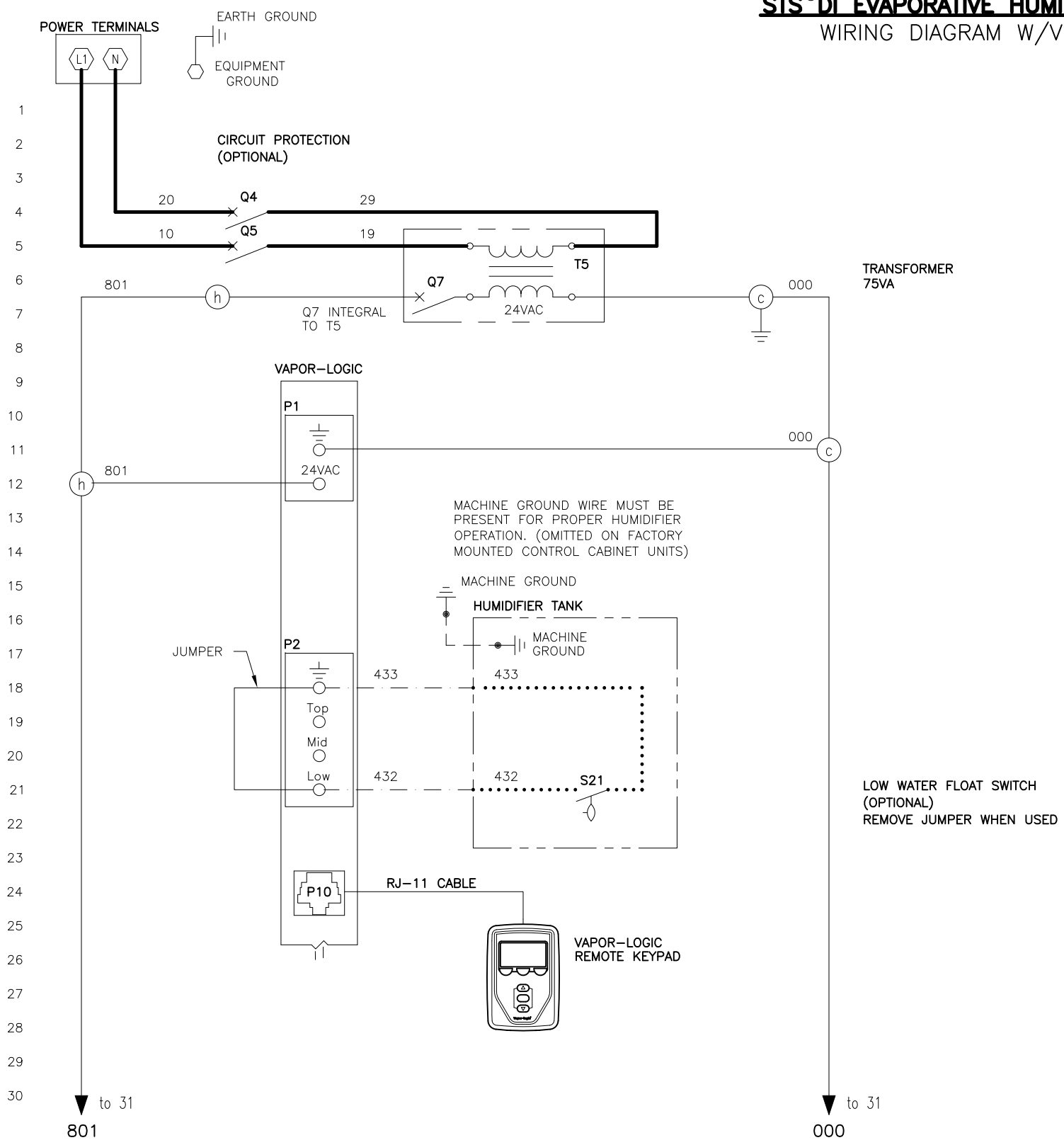


STS® DI EVAPORATIVE HUMIDIFIER WIRING DIAGRAM W/VL®

DATE	REV	RECORD	DR
5/18	C	E.C.# 6686	JK
6/19	D	E.C.# 6812	JK
7/21	E	E.C.# 7011	JK



POWER WIRING
CONTROL CIRCUIT WIRING
FIELD WIRING
OPTIONAL FACTORY
OPTIONAL FIELD

- NOTES:**
1. WIRING AND BRANCH CIRCUIT PROTECTION PROVIDED BY INSTALLER AS PER NATIONAL ELECTRICAL CODE.
 2. FOR SUPPLY AND MACHINE GROUND CONNECTIONS, SIZE WIRE USING 75°C WIRE TABLE PER NATIONAL ELECTRICAL CODE.
 3. USE COPPER CONNECTORS RATED FOR 105°C.

- 4 IF THE INTERLOCK SWITCH IS NOT USED, THEN WIRE DIRECTLY TO TERMINAL SWITCH.
5. REFER TO STS ELECTRICAL DATA SHEET.
- 6 REMOVE SHUNT J404 FROM BOARD IF USING OPTIONAL ACCESSORY.

BREAK TO EXTERNAL CONNECTIONS DIAGRAM

- LEGEND**
- | | |
|-------------------|---------------|
| K RELAY/CONTACTOR | Y SOLENOID |
| T TRANSFORMER | N SENSOR |
| Q CIRCUIT BREAKER | J JUMPER |
| S SWITCH | E WATER PROBE |
| H HEATER | M MOTOR/FAN |

EUROPEAN STS, DI WATER PNEUMATIC ACTUATOR WIRING DIAGRAM

MAT'L: _____

SCALE: _____ P/N: STS-CE-VL-2

DRAWN BY: JK

DATE: 5/21/15