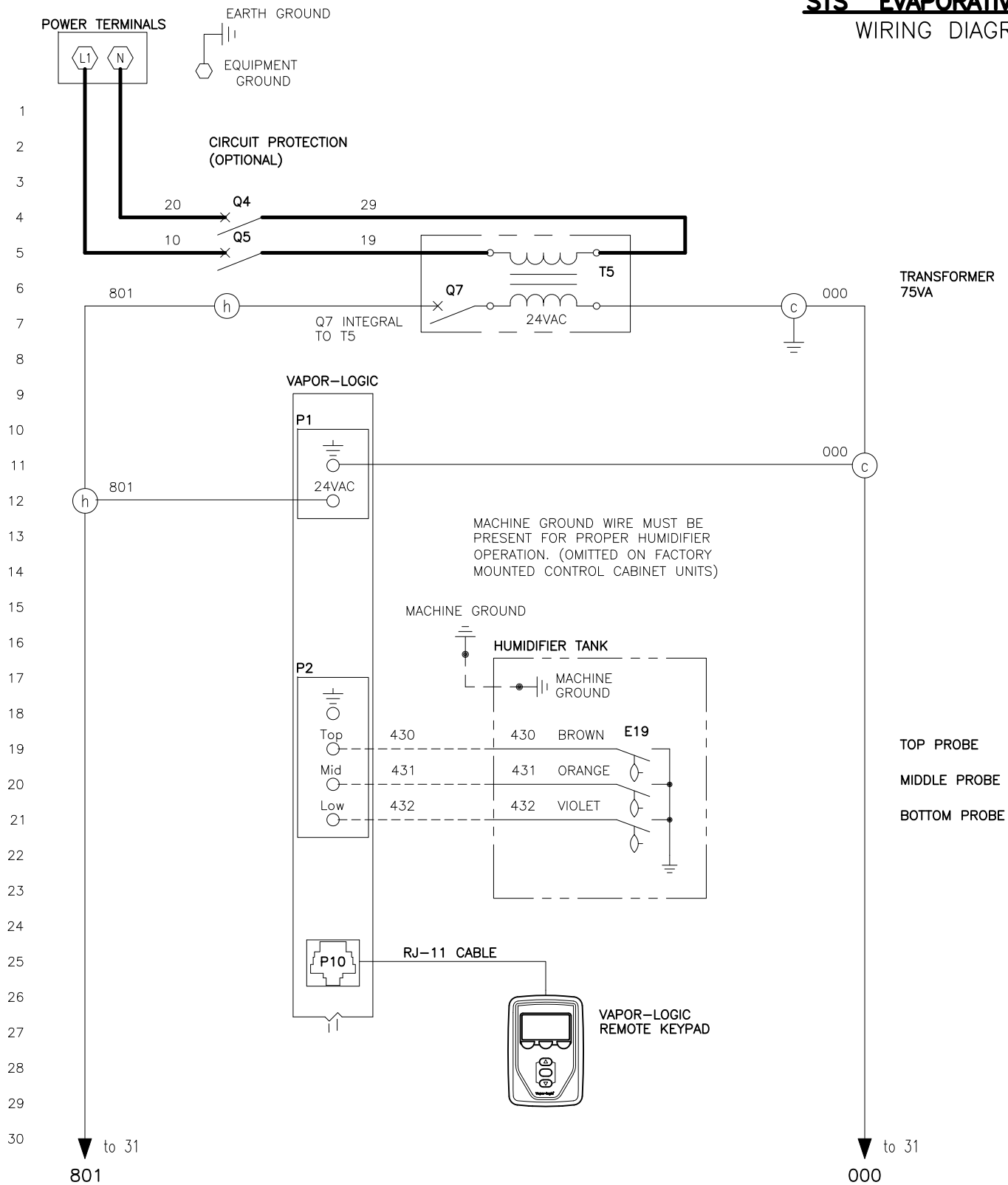


STS® EVAPORATIVE HUMIDIFIER WIRING DIAGRAM W/VL®

DATE	REV	RECORD	DR
6/17	B	E.C.# 6575	JK
6/19	C	E.C.# 6812	JK
7/21	D	E.C.# 7011	JK

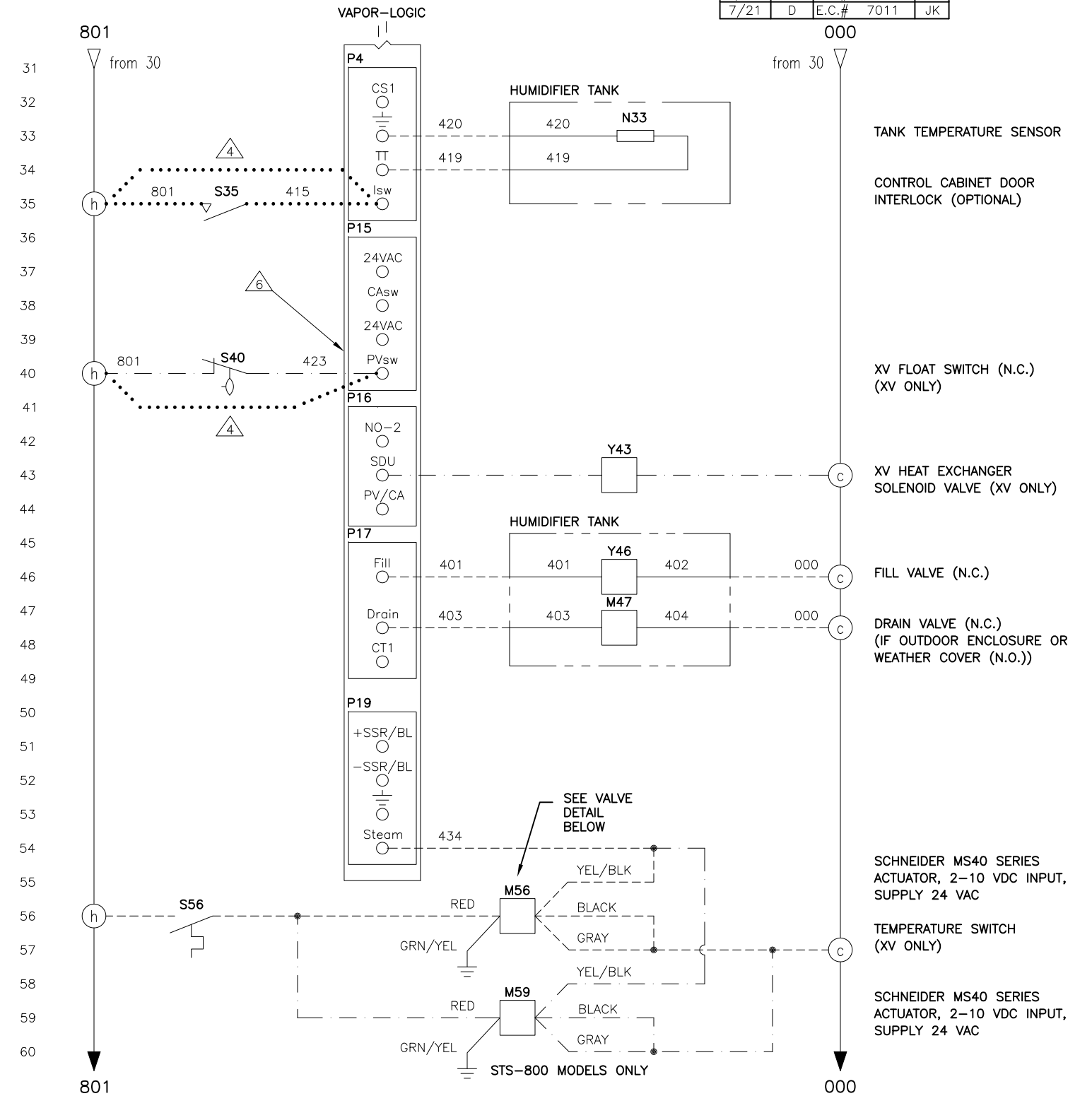


POWER WIRING
CONTROL CIRCUIT WIRING
FIELD WIRING
OPTIONAL FACTORY
OPTIONAL FIELD

NOTES:

1. WIRING AND BRANCH CIRCUIT PROTECTION PROVIDED BY INSTALLER AS PER NATIONAL ELECTRICAL CODE.
2. FOR SUPPLY AND MACHINE GROUND CONNECTIONS, SIZE WIRE USING 75°C WIRE TABLE PER NATIONAL ELECTRICAL CODE.
3. USE COPPER CONNECTORS RATED FOR 105°C.

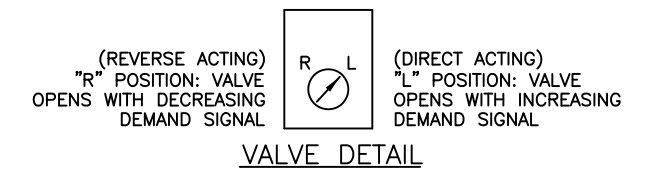
4. IF THE SWITCH IS NOT USED, THEN WIRE DIRECTLY TO TERMINAL SWITCH.
5. REFER TO STS ELECTRICAL DATA SHEET.
6. REMOVE SHUNT J404 FROM BOARD IF USING OPTIONAL ACCESSORY.



BREAK TO EXTERNAL CONNECTIONS DIAGRAM

LEGEND

- | | |
|-------------------|---------------|
| K RELAY/CONTACTOR | Y SOLENOID |
| T TRANSFORMER | N SENSOR |
| Q CIRCUIT BREAKER | J JUMPER |
| S SWITCH | E WATER PROBE |
| H HEATER | M MOTOR/FAN |



		EUROPEAN STS, STANDARD WATER, ELECTRIC ACTUATOR WIRING DIAGRAM	
		MAT'L:	P/N
SCALE:	DATE: 5/21/15	ST5-CE-VL-3	
DRAWN BY: JK			