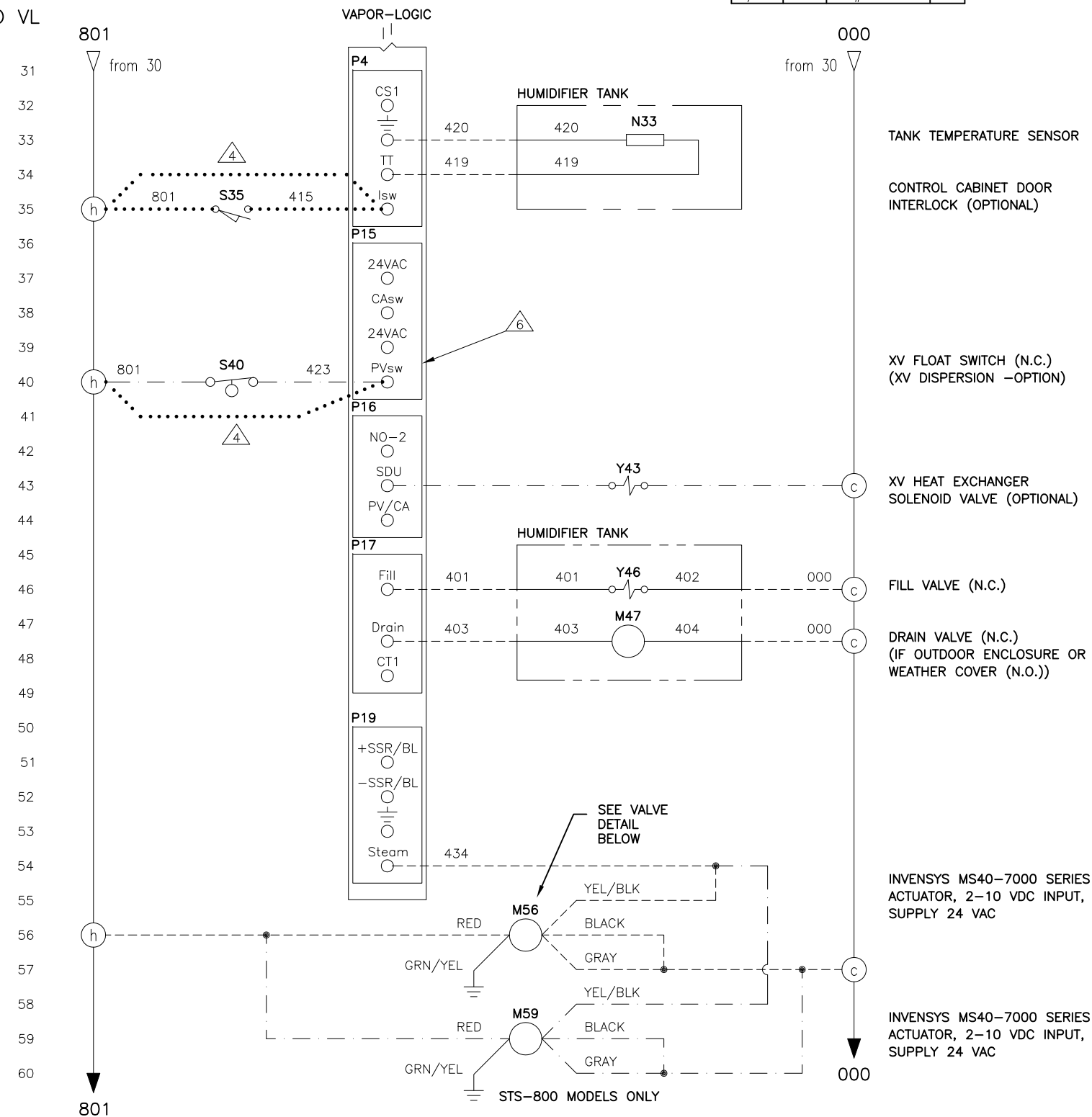
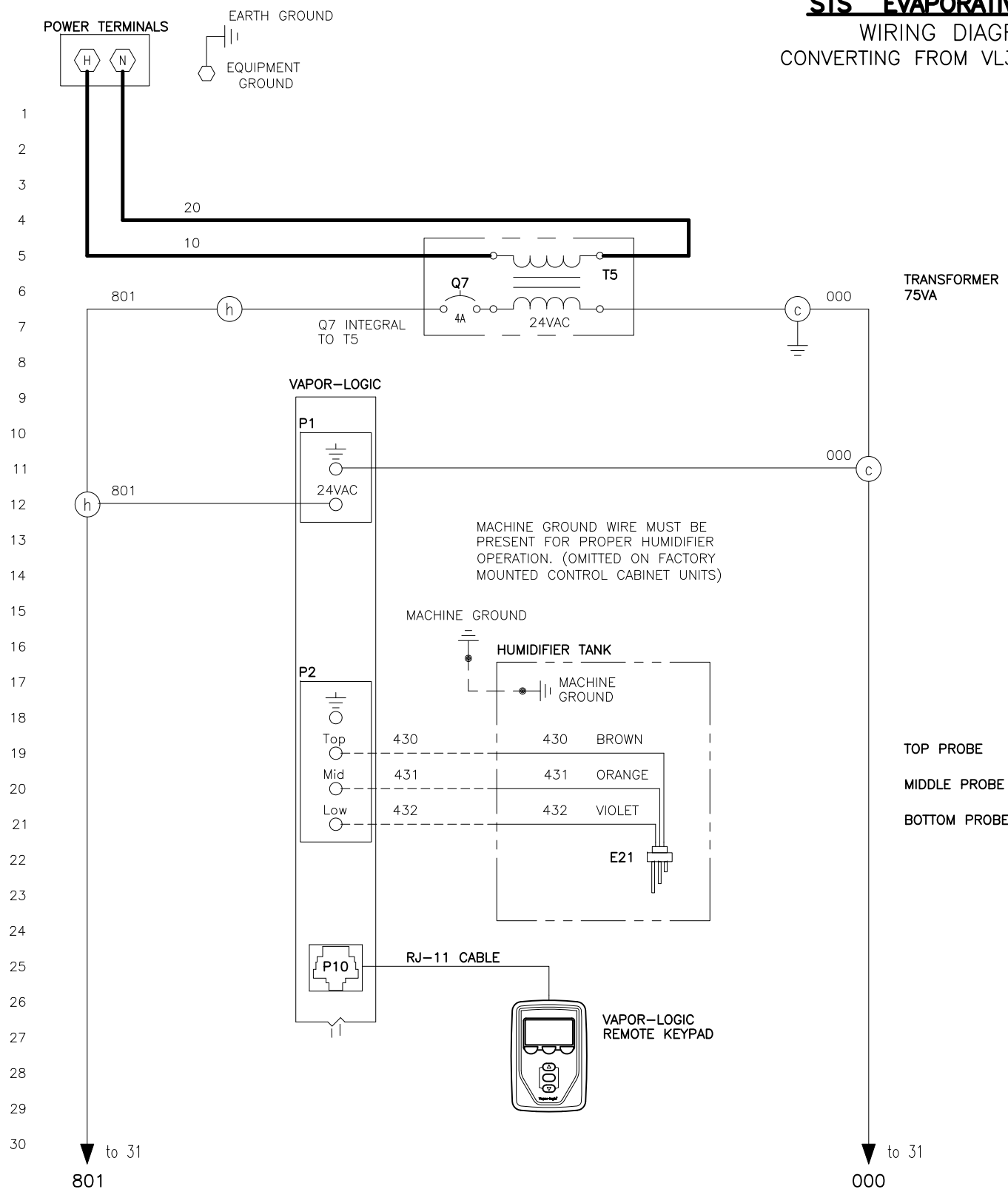


STS[®] EVAPORATIVE HUMIDIFIER
WIRING DIAGRAM W/VL[®]
 CONVERTING FROM VL3 BOARD TO VL

DATE	REV	RECORD	DR
5/15	A	E.C.# 6396	JK
5/18	B	E.C.# 6686	JK



POWER WIRING
CONTROL CIRCUIT WIRING
FIELD WIRING
 OPTIONAL FACTORY
 OPTIONAL FIELD

NOTES:

1. WIRING AND BRANCH CIRCUIT PROTECTION PROVIDED BY INSTALLER AS PER NATIONAL ELECTRICAL CODE.
2. FOR SUPPLY AND MACHINE GROUND CONNECTIONS, SIZE WIRE USING 75°C WIRE TABLE PER NATIONAL ELECTRICAL CODE.
3. USE COPPER CONNECTORS RATED FOR 105°C.

4. IF THE SWITCH IS NOT USED, THEN WIRE DIRECTLY TO TERMINAL SWITCH.
5. REFER TO STS ELECTRICAL DATA SHEET.
6. REMOVE SHUNT J404 FROM BOARD IF USING OPTIONAL ACCESSORY.

BREAK TO EXTERNAL CONNECTIONS DIAGRAM

LEGEND

- | | |
|-------------------|---------------|
| K RELAY/CONTACTOR | Y SOLENOID |
| T TRANSFORMER | N SENSOR |
| Q CIRCUIT BREAKER | J JUMPER |
| S SWITCH | E WATER PROBE |
| H HEATER | M MOTOR/FAN |

(REVERSE ACTING)
 "R" POSITION: VALVE OPENS WITH DECREASING DEMAND SIGNAL

(DIRECT ACTING)
 "L" POSITION: VALVE OPENS WITH INCREASING DEMAND SIGNAL

VALVE DETAIL

CONVERTING FROM VL3 BOARD TO VL	STS, STANDARD WATER, ELECTRIC ACTUATOR WIRING DIAGRAM
drSteam	MAT'L: _____
	SCALE: _____ P/N
	DATE: 5/21/15
	STL-13