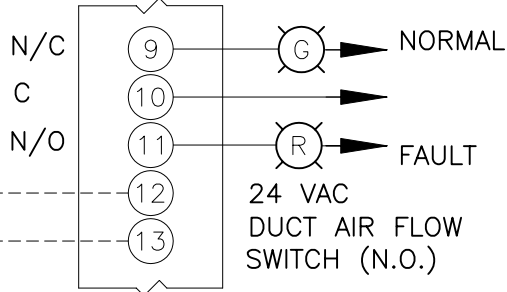


VAPOR-LOGIC® 3 EXTERNAL CONNECTIONS DIAGRAM

CONTROL ARRANGEMENT: OOX

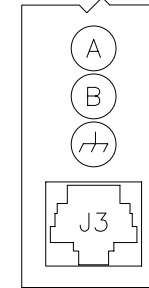
4-20 mA HUMIDITY SENSOR W/ ON-OFF HIGH LIMIT

VAPOR LOGIC 3



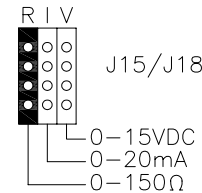
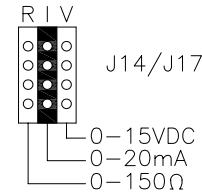
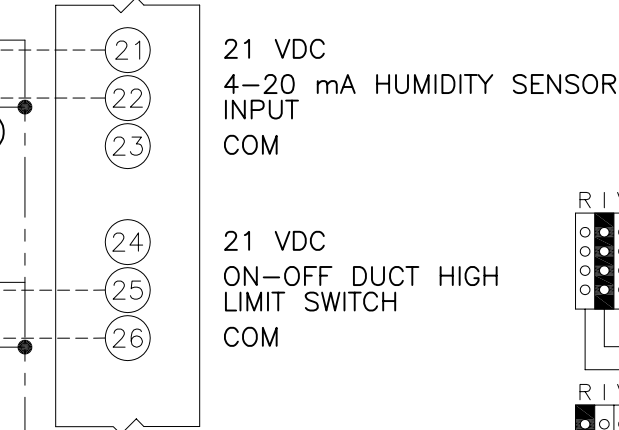
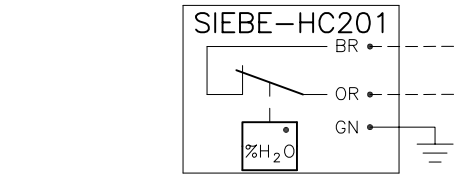
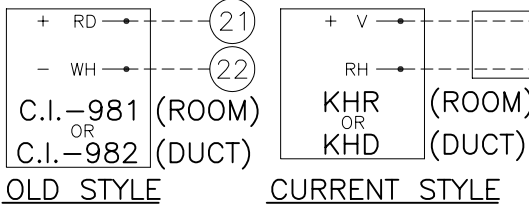
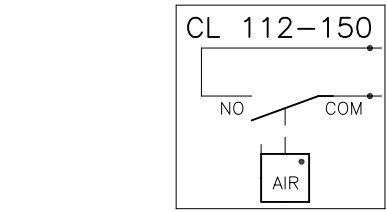
ALARM RELAY
(24VAC, 1 AMP MAX
OPTIONAL BY OTHERS)

VAPOR LOGIC 3



LONWORKS CONNECTION
TWISTED PAIR
(USED FOR NETWORK)

VAPOR LOGIC 3
NETWORK CONNECTION (8-WIRE)



J16/J19
(NOT USED)

JUMPERS (J14/J17), (J15/J18),
AND (J16/J19) CONFIGURE
THEIR ANALOG INPUT
TO ACCEPT A RESISTANCE,
CURRENT, OR VOLTAGE INPUT.

2-WIRE #18 GA
SHIELD CABLE



POWER WIRING
CONTROL CIRCUIT
WIRING
FIELD WIRING

LEGEND



BREAK TO FACTORY WIRING DIAGRAM

NOTE: CHANGING CONTROL INPUT SIGNAL
REQUIRES SOFTWARE AND INPUT JUMPER
MODIFICATION. PLEASE REFER TO
VAPOR LOGIC 3 INSTALLATION AND OPERATION,
MANUAL (IOM).