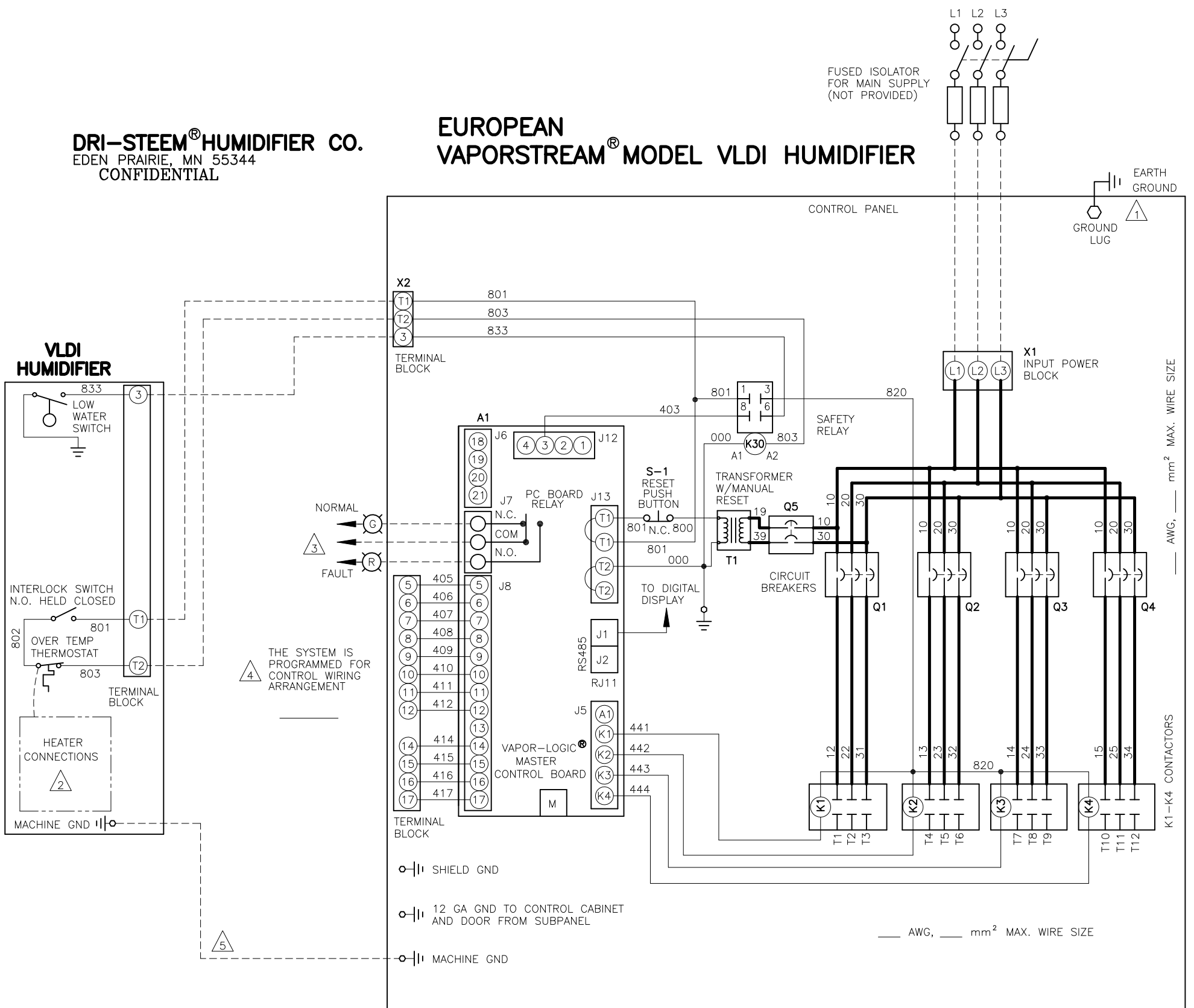


DRI-STEEM® HUMIDIFIER CO.
 EDEN PRAIRIE, MN 55344
 CONFIDENTIAL

EUROPEAN VAPORSTREAM® MODEL VLDI HUMIDIFIER



NOTES:

- 1 GROUND HUMIDIFIER SYSTEM TO AN APPROVED EARTH GROUND.
- 2 FOR HEATER CONNECTIONS, SEE SEPARATE DIAGRAM UNDER ELECTRICAL COVER.
- 3 FAULT CIRCUIT, 24 VAC, 1 AMP MAX (OPTIONAL BY OTHERS)
- 4 SEE SEPARATE DIAGRAM FOR CONTROL WIRING ARRANGEMENT TO TERMINAL BLOCK X2.
- 5 WIRE MUST BE PRESENT FOR PROPER HUMIDIFIER OPERATION. (OMITTED ON FACTORY MOUNTED CONTROL CABINET UNITS)
- 6 WIRING AND BRANCH CIRCUIT PROTECTION PROVIDED BY INSTALLER.
- 7. FOR SUPPLY, HEATER AND MACHINE GROUND CONNECTIONS USE 75°C WIRE SIZING TABLES. USE COPPER CONDUCTORS RATED FOR 105°C ENVIRONMENT.

PRIMARY VOLTAGE: _____ PH: _____ HZ: 50

QUANTITY OF STAGES: _____

STAGE 1 _____ AMPS

STAGE 2 _____ AMPS

STAGE 3 _____ AMPS

STAGE 3 _____ AMPS

_____ TOTAL UNIT AMPS

LEGEND

POWER WIRING

CONTROL CIRCUIT WIRING

FIELD WIRING

PROGRAM CODE NO: _____

MODEL NO: _____

ORDER NO: _____