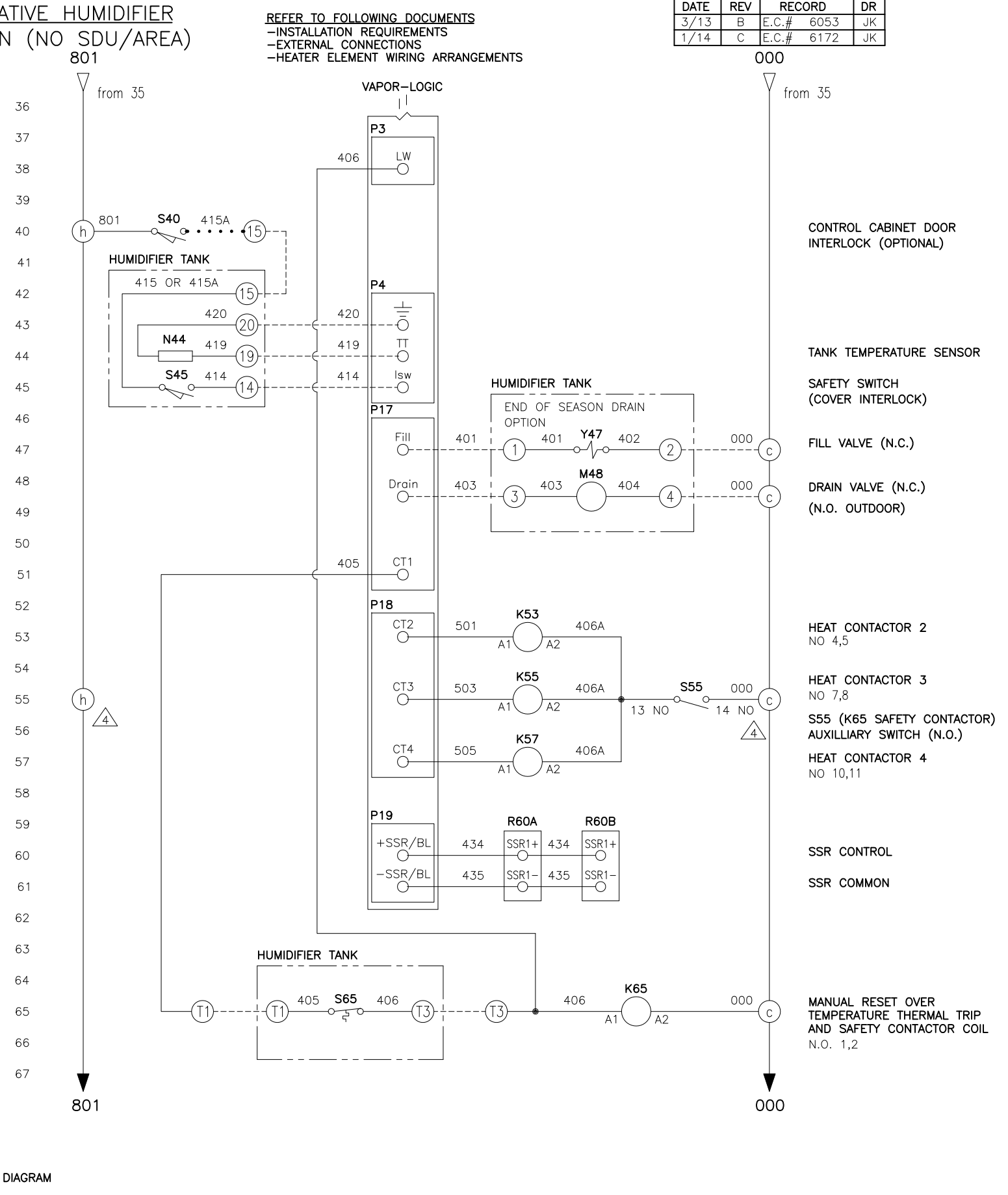
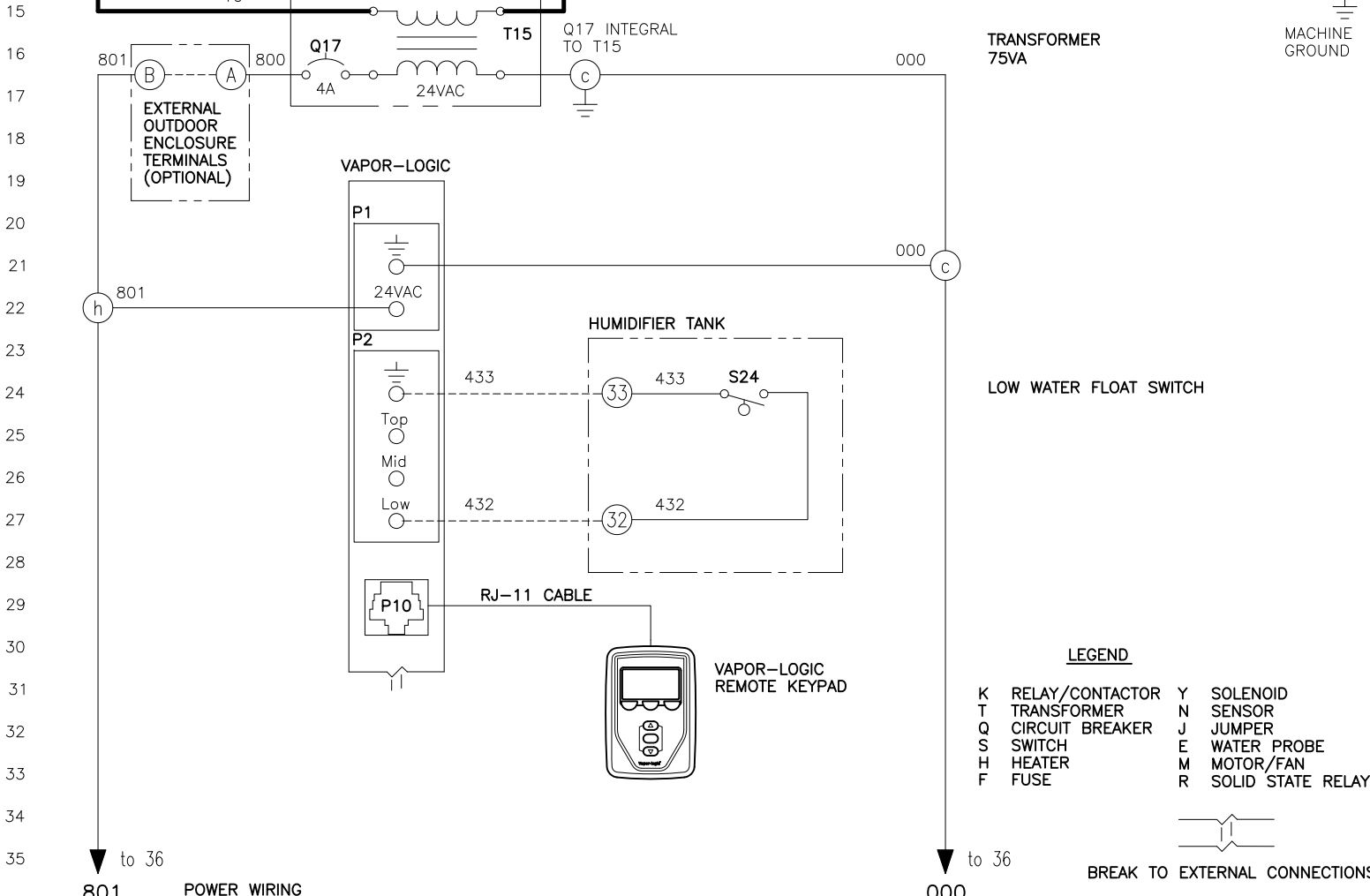
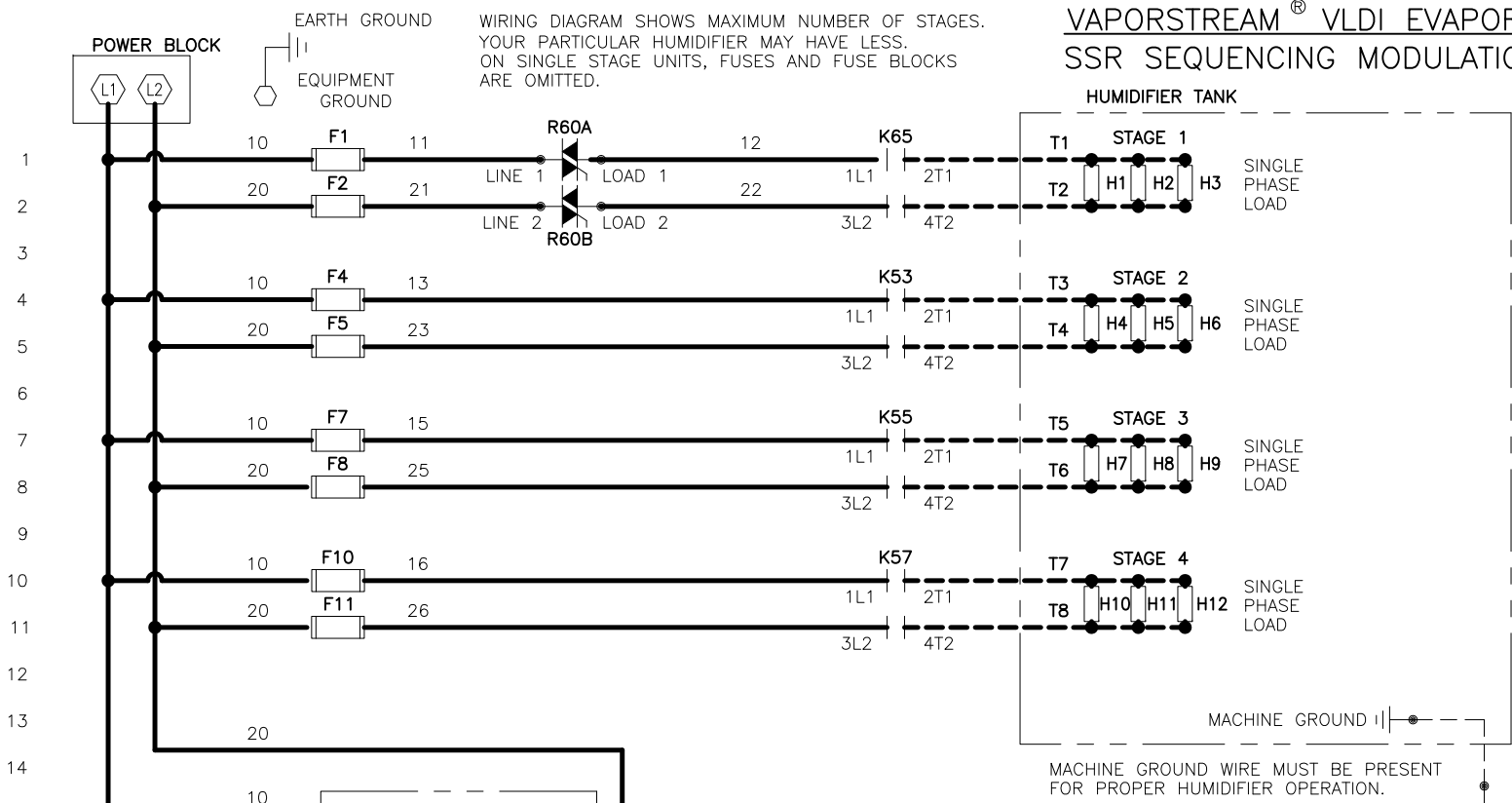


VAPORSTREAM® VLDI EVAPORATIVE HUMIDIFIER SSR SEQUENCING MODULATION (NO SDU/AREA)

REFER TO FOLLOWING DOCUMENTS
 -INSTALLATION REQUIREMENTS
 -EXTERNAL CONNECTIONS
 -HEATER ELEMENT WIRING ARRANGEMENTS

DATE	REV	RECORD	DR
3/13	B	E.C.# 6053	JK
1/14	C	E.C.# 6172	JK



- NOTES:
1. WIRING AND BRANCH CIRCUIT PROTECTION PROVIDED BY INSTALLER AS PER NATIONAL ELECTRICAL CODE.
 2. FOR SUPPLY HEATER AND MACHINE GROUND CONNECTIONS, SIZE WIRE USING 75°C WIRE TABLE PER NATIONAL ELECTRICAL CODE.
 3. REFER TO AUXILIARY TRANSFORMER WIRING DIAGRAM FOR ALL MULTIPLE STAGE WITH HIGH VA DRAW, WHEN TWO TRANSFORMERS ARE PRESENT.
 4. REFER TO VLC ELECTRICAL DATA SHEET.
 5. REFER TO VLC ELECTRICAL DATA SHEET.

		VLDI, DI WATER, SSR SEQ. DIAGRAM	
		MAT'L:	P/N VLC-VL5-20
SCALE:	DATE: 1/4/13	DRAWN BY: KROG	