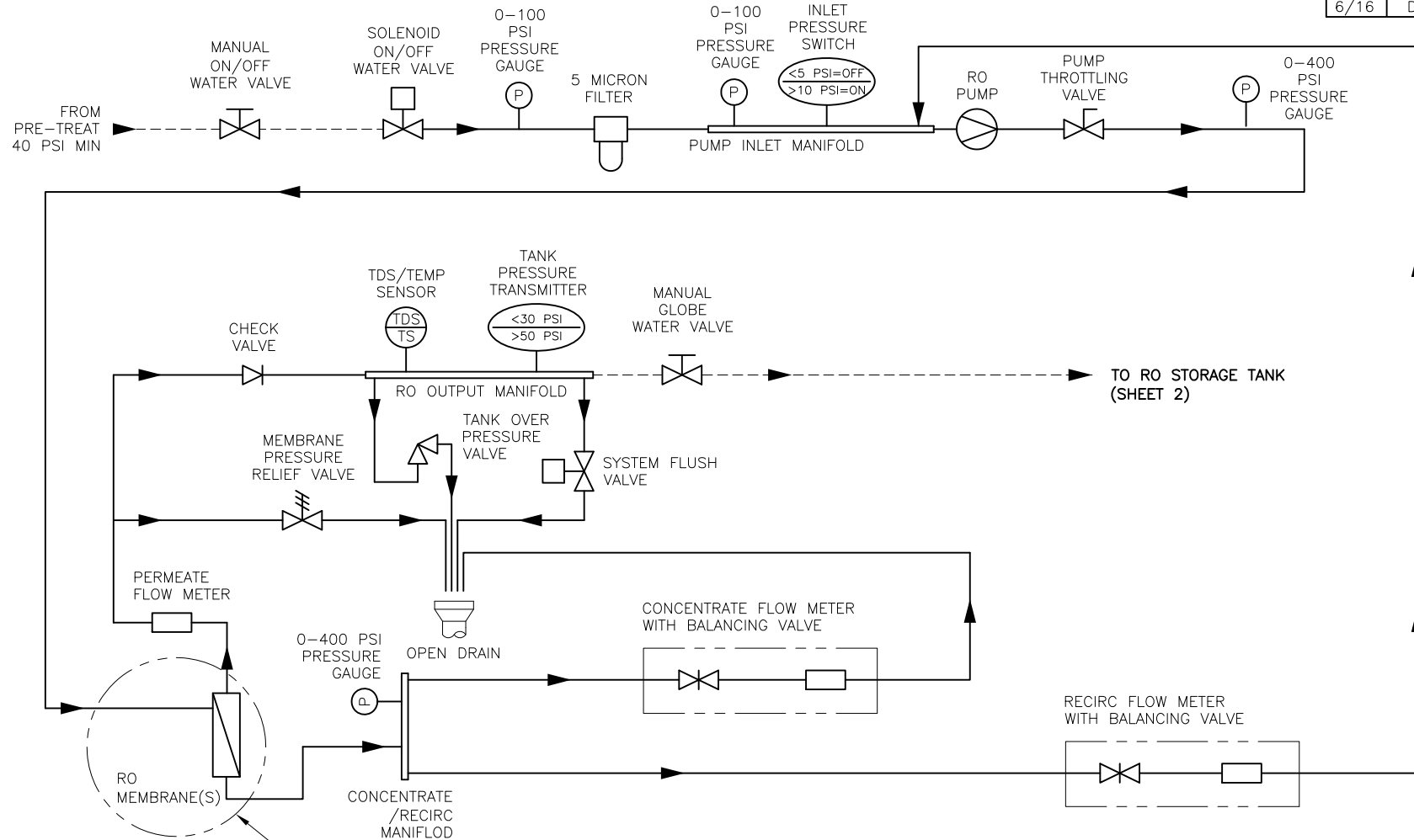


CONFIDENTIAL

| DATE | REV | RECORD | DR |
|------|-----|------------|----|
| 3/15 | B | E.C.# 6350 | JK |
| 9/15 | C | E.C.# 6408 | JK |
| 6/16 | D | E.C.# 6473 | JK |



LEGEND:

- FACTORY PIPING SUPPLIED BY DRISTEEM
- - - FIELD PIPING SUPPLIED BY OTHERS

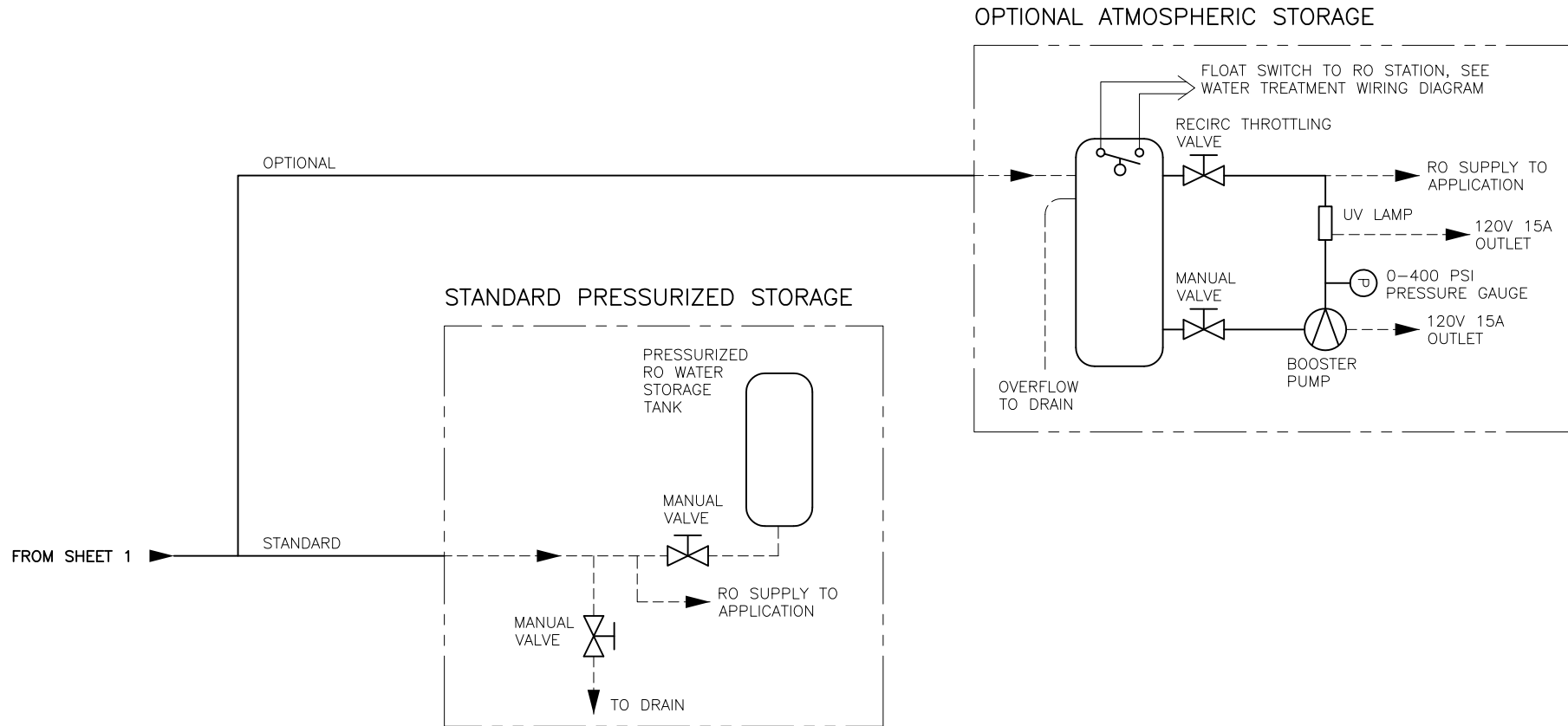
SEE SHEETS 3, 4, 5 FOR DETAIL

| RO-400 PIPING SCHEMATIC | |
|----------------------------|--------------|
| MAT'L: | |
| SCALE: 1:1 | P/N |
| DRAWN BY: JK | WT-PIPING-1 |
| DATE: 2/11/15 | SHEET 1 OF 5 |



CONFIDENTIAL

| DATE | REV | RECORD | DR |
|------|-----|------------|----|
| 3/15 | B | E.C.# 6350 | JK |
| 9/15 | C | E.C.# 6408 | JK |
| 6/16 | D | E.C.# 6473 | JK |



LEGEND:

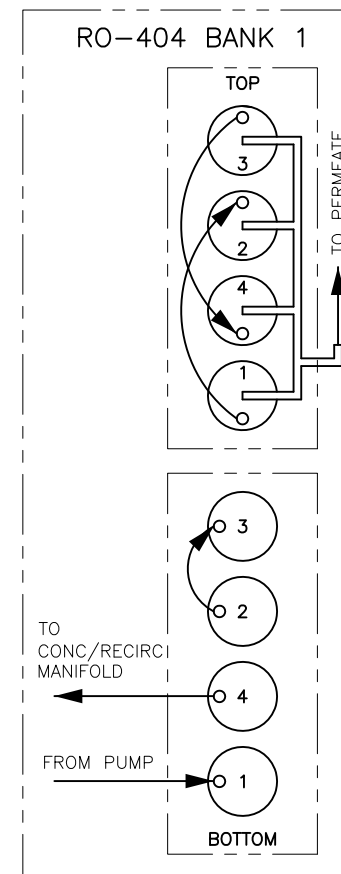
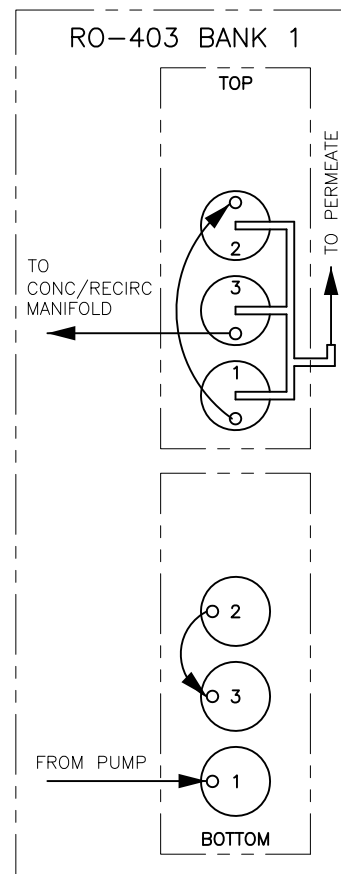
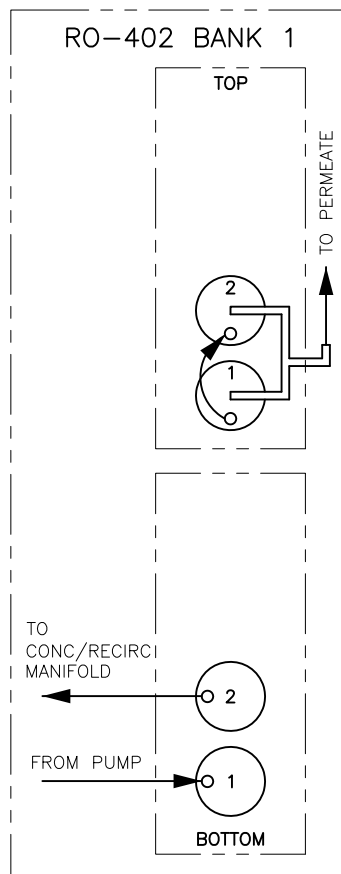
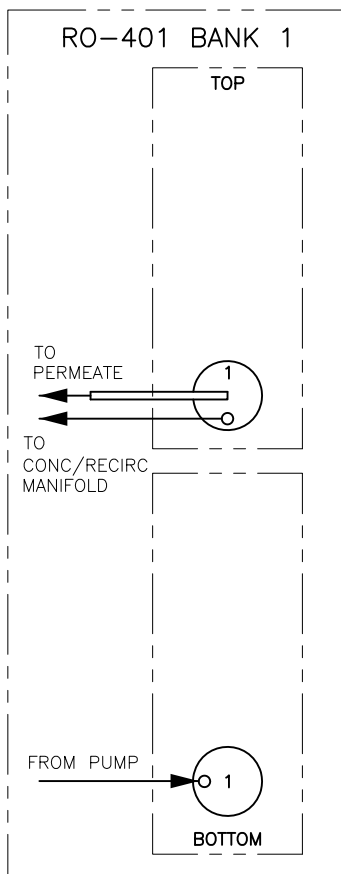
- FACTORY PIPING SUPPLIED BY DRISTEEM
- FIELD PIPING SUPPLIED BY OTHERS

| RO-400 PIPING SCHEMATIC | |
|----------------------------|--------------|
| MAT'L: | |
| SCALE: 1:1 | P/N |
| DRAWN BY: JK | WT-PIPING-1 |
| DATE: 2/11/15 | SHEET 2 OF 5 |

driSteem 

CONFIDENTIAL

| DATE | REV | RECORD | DR |
|------|-----|------------|----|
| 3/15 | B | E.C.# 6350 | JK |
| 9/15 | C | E.C.# 6408 | JK |
| 6/16 | D | E.C.# 6473 | JK |



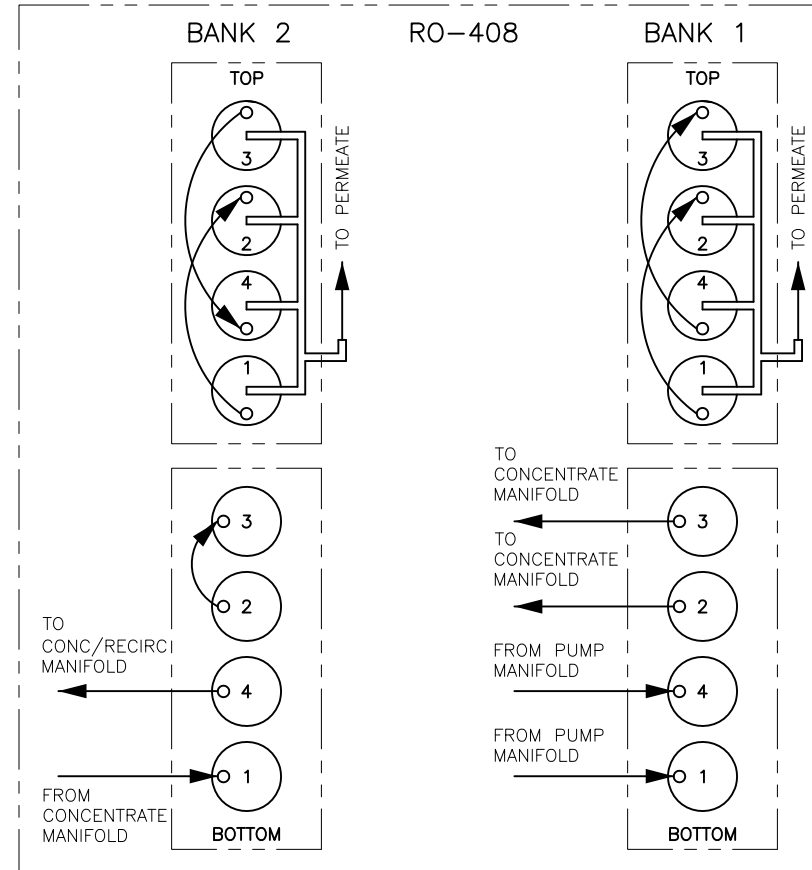
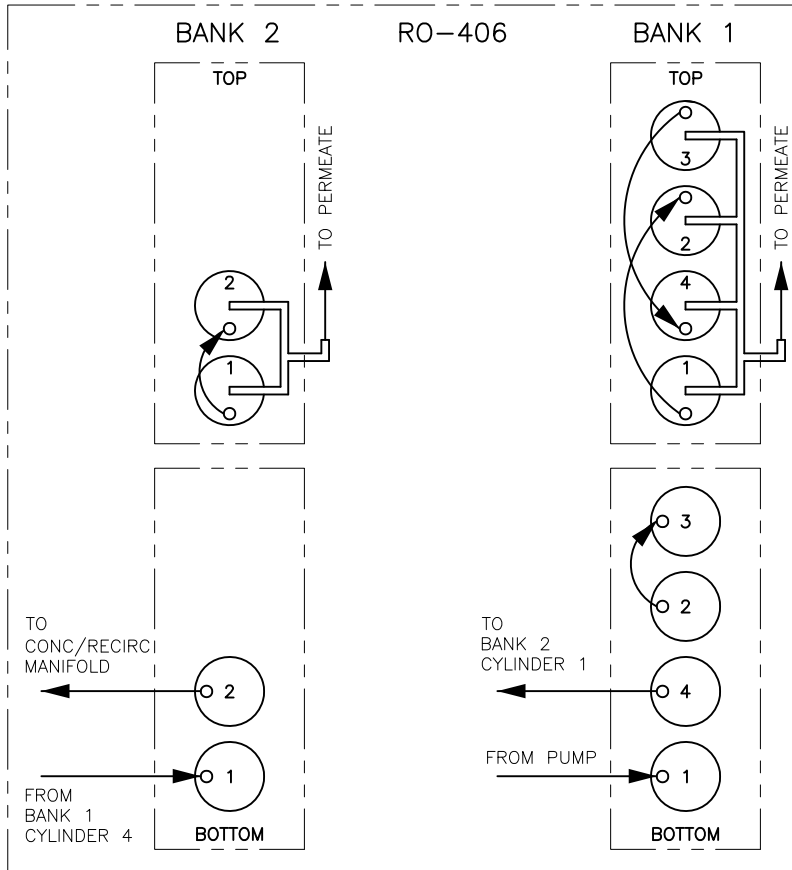
LEGEND:

- FACTORY SUPPLY/CONDENSATE PIPING
- FACTORY PERMEATE PIPING

| | | | |
|---------------|--|----------------------------|--|
| | | RO-400 PIPING SCHEMATIC | |
| | | MAT'L: | |
| SCALE: 1:1 | | P/N | |
| DRAWN BY: JK | | WT-PIPING-1 | |
| DATE: 2/11/15 | | SHEET 3 OF 5 | |

CONFIDENTIAL

| DATE | REV | RECORD | DR |
|------|-----|------------|----|
| 3/15 | B | E.C.# 6350 | JK |
| 9/15 | C | E.C.# 6408 | JK |
| 6/16 | D | E.C.# 6473 | JK |



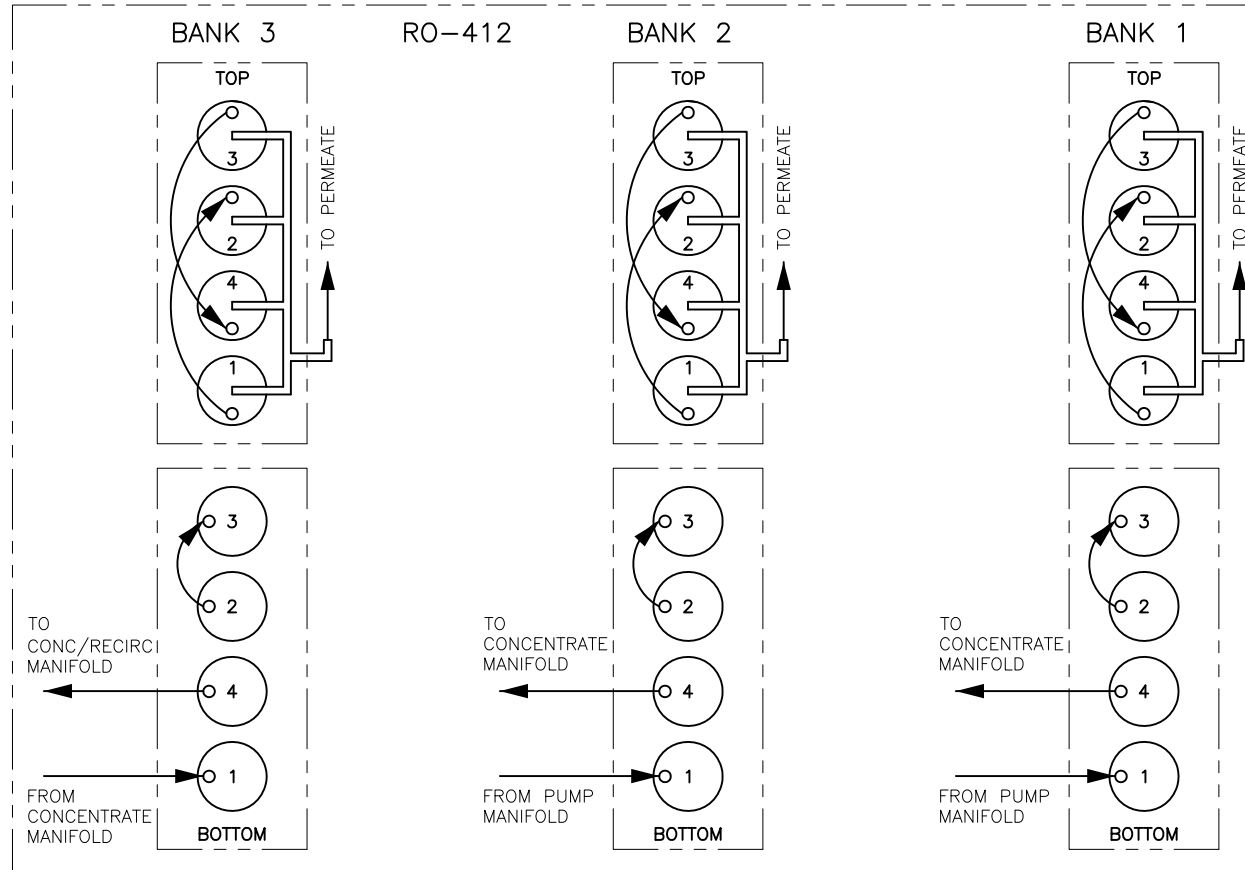
LEGEND:

- FACTORY SUPPLY/CONDENSATE PIPING
- FACTORY PERMEATE PIPING

| | | | |
|--|--|-------------------------|--------------|
| | | RO-400 | |
| | | PIPING SCHEMATIC | |
| | | MAT'L: | |
| | | SCALE: 1:1 | P/N |
| | | DRAWN BY: JK | WT-PIPING-1 |
| | | DATE: 2/11/15 | SHEET 4 OF 5 |


CONFIDENTIAL

| DATE | REV | RECORD | DR |
|------|-----|------------|----|
| 3/15 | B | E.C.# 6350 | JK |
| 9/15 | C | E.C.# 6408 | JK |
| 6/16 | D | E.C.# 6473 | JK |



LEGEND:

- FACTORY SUPPLY/CONDENSATE PIPING
- ▬ FACTORY PERMEATE PIPING

| | | | |
|---|--|----------------------------|--|
| | | RO-400 PIPING SCHEMATIC | |
| | | MAT'L: | |
|  | | SCALE: 1:1 | P/N WT-PIPING-1 SHEET 5 OF 5 |
| | | DRAWN BY: JK | |
| | | DATE: 2/11/15 | |