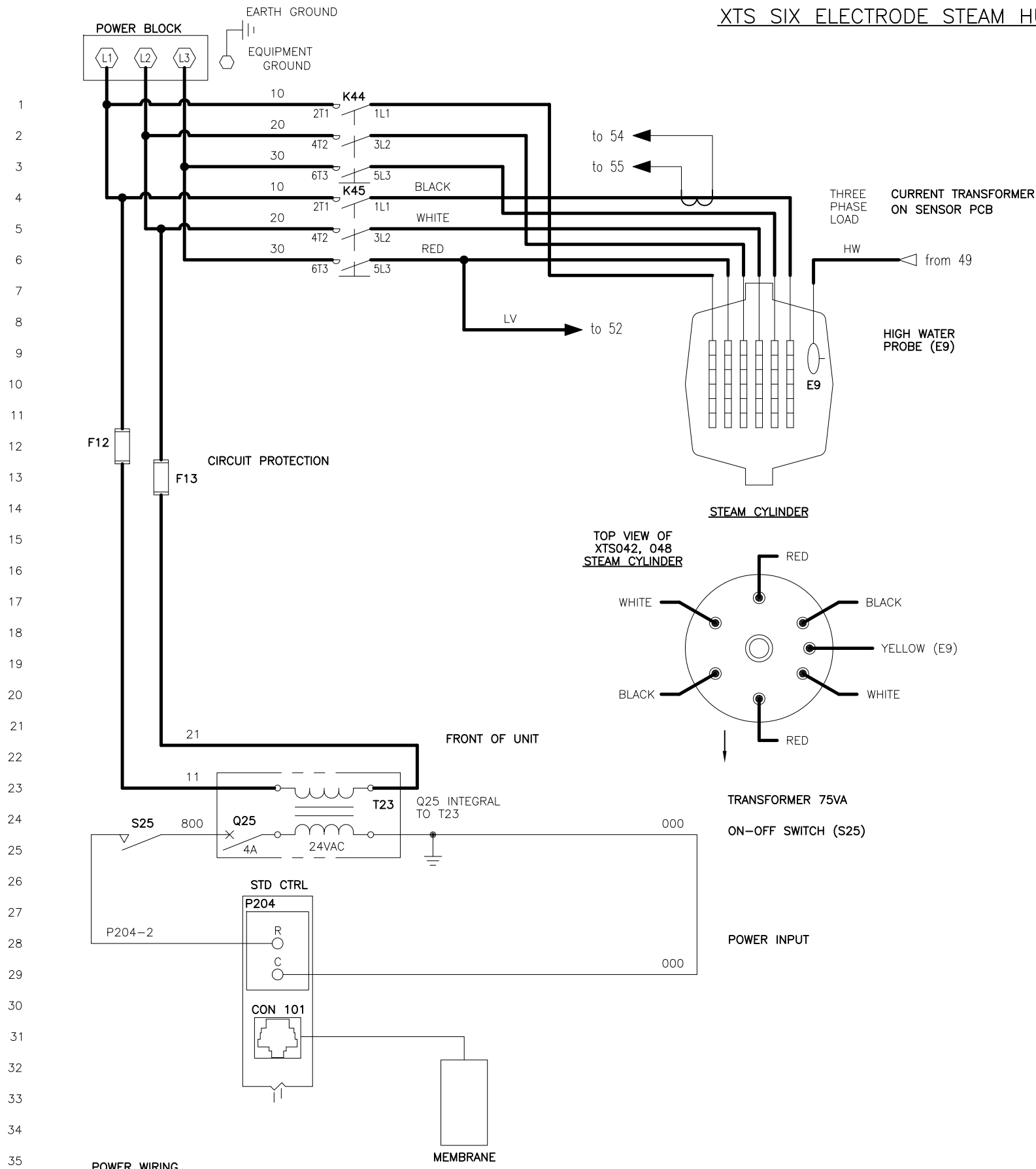


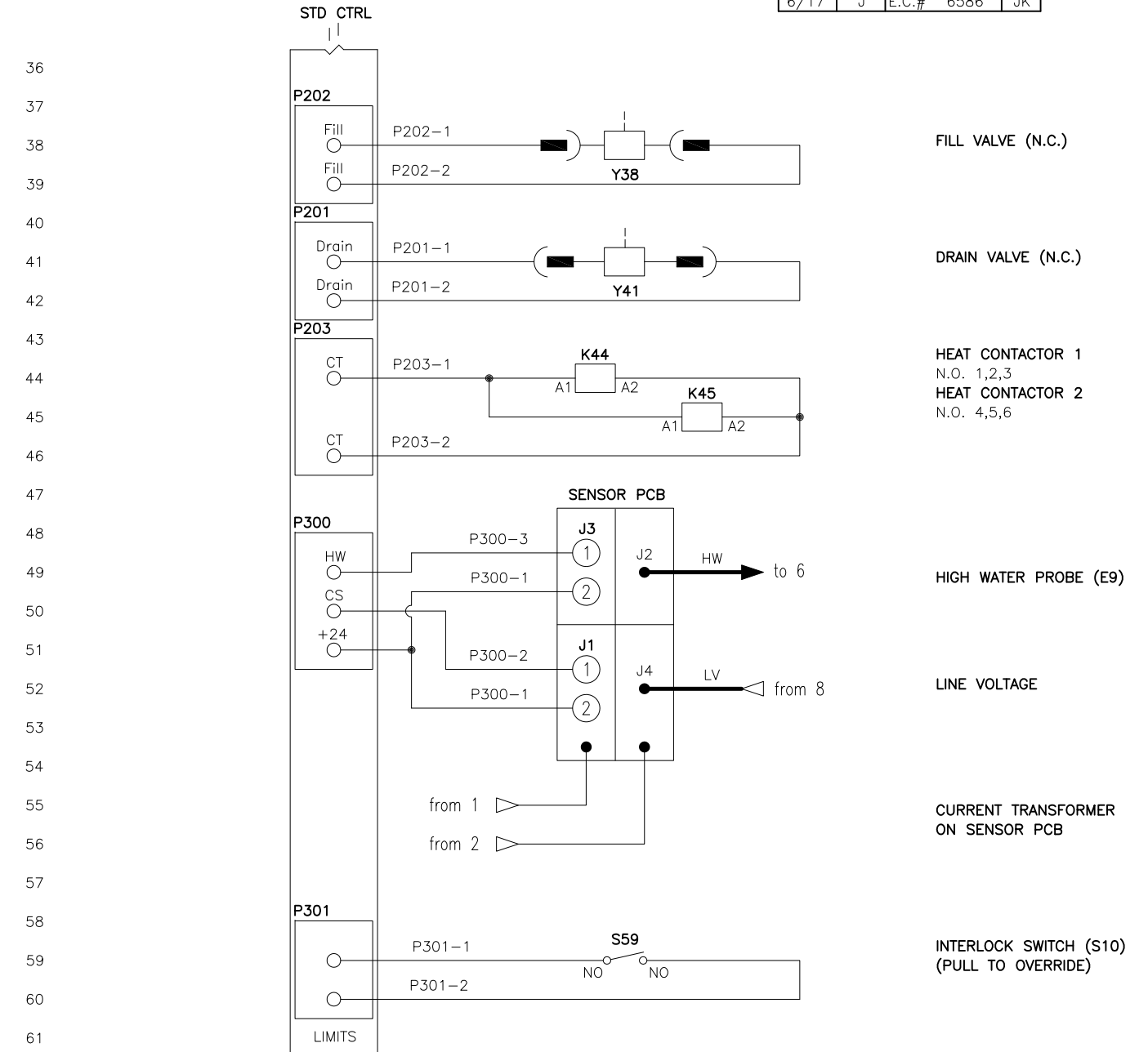
# XTS SIX ELECTRODE STEAM HUMIDIFIER

REFER TO FOLLOWING DOCUMENTS  
 -INSTALLATION REQUIREMENTS  
 -EXTERNAL CONNECTIONS

| DATE | REV | RECORD     | DR |
|------|-----|------------|----|
| 1/14 | H   | E.C.# 6172 | JK |
| 5/17 | I   | E.C.# 6551 | JK |
| 6/17 | J   | E.C.# 6586 | JK |



- NOTES:
1. WIRING AND BRANCH CIRCUIT PROTECTION PROVIDED BY INSTALLER AS PER NATIONAL ELECTRICAL CODE.
  2. FOR SUPPLY HEATER AND MACHINE GROUND CONNECTIONS, SIZE WIRE USING 75°C WIRE TABLE PER NATIONAL ELECTRICAL CODE.
  3. USE COPPER CONNECTORS RATED FOR 105°C.
  4. REFER TO XTS ELECTRICAL DATA SHEET.



BREAK TO EXTERNAL CONNECTIONS DIAGRAM

**LEGEND**

|   |                 |   |             |
|---|-----------------|---|-------------|
| K | RELAY/CONTACTOR | Y | SOLENOID    |
| T | TRANSFORMER     | N | SENSOR      |
| Q | CIRCUIT BREAKER | J | JUMPER      |
| S | SWITCH          | E | WATER PROBE |
| H | HEATER          | M | MOTOR/FAN   |
| F | FUSE            |   |             |

|                |              |                   |     |
|----------------|--------------|-------------------|-----|
|                |              | XTS SIX ELECTRODE |     |
|                |              | MAT'L:            | P/N |
| SCALE:         | DATE: 5/9/12 | XTS-STD-4         |     |
| DRAWN BY: KROG |              |                   |     |